



SZABO SCANDIC

Part of Europa Biosite

Produktinformation



Forschungsprodukte & Biochemikalien



Zellkultur & Verbrauchsmaterial



Diagnostik & molekulare Diagnostik



Laborgeräte & Service

Weitere Information auf den folgenden Seiten!
See the following pages for more information!



Lieferung & Zahlungsart

siehe unsere [Liefer- und Versandbedingungen](#)

Zuschläge

- Mindermengenzuschlag
- Trockeneiszuschlag
- Gefahrgutzuschlag
- Expressversand

SZABO-SCANDIC HandelsgmbH

Quellenstraße 110, A-1100 Wien

T. +43(0)1 489 3961-0

F. +43(0)1 489 3961-7

mail@szabo-scandic.com

www.szabo-scandic.com

[linkedin.com/company/szaboscandic](https://www.linkedin.com/company/szaboscandic) 

6-His Tag Antibody

Rabbit Polyclonal

Conjugate HRP

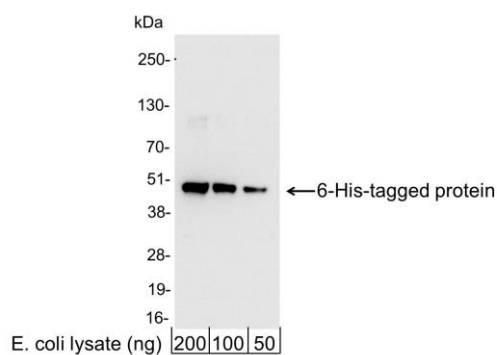
Antigen Affinity Purified

Catalog No. A190-114P

Lot No. 27

APPLICATIONS	WB, ICC, ELISA						
AMOUNT	0.1 ml						
CONCENTRATION	1 mg/ml						
STORAGE/SHELF LIFE	2 – 8°C / 1 year from date of receipt						
PHYSICAL STATE	Liquid						
BUFFER	Phosphate Buffered Saline (PBS) containing 0.2% BSA and 0.05% Pro-Clean 400						
ISOTYPE	IgG						
ORIGIN	USA						
PRODUCTION PROCEDURES	<p>Rabbits were immunized with 6-His (HHHHHH) conjugated to KLH. Antibody was isolated by affinity chromatography using the peptide immobilized on solid support and conjugated to horseradish peroxidase (HRP). This antibody does not detect all N-terminal 6-His tagged proteins.</p> <p>Prior to conjugation, immunoglobulin concentration was determined using Beer's Law where 1mg/mL IgG has an A280 of 1.4. Molar enzyme/antibody protein ratio is 4:1.</p>						
APPLICATIONS	<p>Centrifuge tube to remove product from lid. Optimal working dilutions should be determined experimentally by the investigator. Prepare working dilution immediately before use.</p> <table><tr><td>Western Blot</td><td>1:1000 – 1:30,000</td></tr><tr><td>Immunocytochemistry</td><td>1:200 – 1:500</td></tr><tr><td>ELISA</td><td>1:10,000 – 1:100,000</td></tr></table>	Western Blot	1:1000 – 1:30,000	Immunocytochemistry	1:200 – 1:500	ELISA	1:10,000 – 1:100,000
Western Blot	1:1000 – 1:30,000						
Immunocytochemistry	1:200 – 1:500						
ELISA	1:10,000 – 1:100,000						
APPLICATION NOTES	<p>All western blot analysis is performed using 5% Milk-TBST for blocking and as antibody diluent. Primary antibody is incubated overnight.</p> <p>Western blots of cell lysates are performed using Goat anti-Rabbit IgG Heavy and Light Chain Antibody (A120-101P).</p>						
ADDITIONAL INFO	<p>https://www.fortislife.com/p/A190-114P</p> <p>Use the link above to view SDS, a current list of citations, and other product specific information.</p>						

This document certifies that this product has met all of the quality control standards defined by Bethyl Laboratories, Inc.
Michael Spencer, PhD Date: May 6, 2024

**Detection of 6-His-tagged protein by western blot.**

Samples: 200, 100, or 50 ng of E. coli whole cell lysate expressing a multi-tag fusion protein. *Antibodies:* Affinity-purified, HRP-conjugated, rabbit anti-6-His antibody A190-114P used for WB at 0.04 µg/ml (1:25,000). *Detection:* Chemiluminescence with an exposure time of 3 seconds.