



SZABO SCANDIC

Part of Europa Biosite

Produktinformation



Forschungsprodukte & Biochemikalien



Zellkultur & Verbrauchsmaterial



Diagnostik & molekulare Diagnostik



Laborgeräte & Service

Weitere Information auf den folgenden Seiten!
See the following pages for more information!



Lieferung & Zahlungsart

siehe unsere [Liefer- und Versandbedingungen](#)

Zuschläge

- Mindermengenzuschlag
- Trockeneiszuschlag
- Gefahrgutzuschlag
- Expressversand

SZABO-SCANDIC Handels GmbH

Quellenstraße 110, A-1100 Wien

T. +43(0)1 489 3961-0

F. +43(0)1 489 3961-7

mail@szabo-scandic.com

www.szabo-scandic.com

[linkedin.com/company/szaboscandic](https://www.linkedin.com/company/szaboscandic) 

S Tag Antibody

Goat Polyclonal

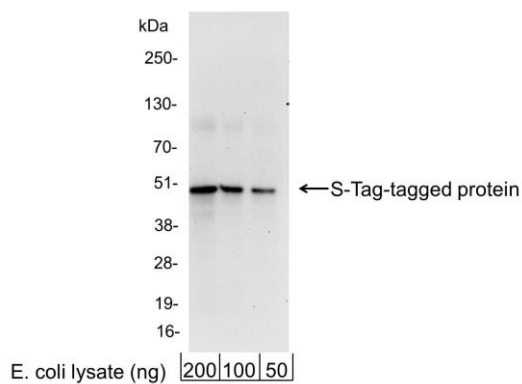
Antigen Affinity Purified

Catalog No. A190-134A

Lot No. 240904

APPLICATIONS	WB, IP, ICC, ELISA								
AMOUNT	0.1 ml								
CONCENTRATION	1 mg/ml								
STORAGE/SHELF LIFE	2 – 8°C / 1 year from date of receipt								
PHYSICAL STATE	Liquid								
BUFFER	Phosphate Buffered Saline (PBS) containing 0.09% Sodium Azide								
ISOTYPE	IgG								
ORIGIN	USA								
PRODUCTION PROCEDURES	<p>Goats were immunized with S-Tag (KETAAAKFERQHMDs) conjugated to KLH. Antibody was isolated by affinity chromatography using the peptide immobilized on solid support.</p> <p>Immunoglobulin concentration was determined using Beer's Law where 1 mg/mL IgG has an A280 of 1.4.</p>								
APPLICATIONS	<p>Centrifuge tube to remove product from lid. Optimal working dilutions should be determined experimentally by the investigator. Prepare working dilution immediately before use.</p> <table><tr><td>Western Blot</td><td>1:1000 – 1:30,000</td></tr><tr><td>Immunoprecipitation</td><td>1 – 4 µg/mg lysate</td></tr><tr><td>Immunocytochemistry</td><td>1:100 – 1:400</td></tr><tr><td>ELISA</td><td>1:1000 – 1:30,000; for coating plates 1:100 – 1:500</td></tr></table>	Western Blot	1:1000 – 1:30,000	Immunoprecipitation	1 – 4 µg/mg lysate	Immunocytochemistry	1:100 – 1:400	ELISA	1:1000 – 1:30,000; for coating plates 1:100 – 1:500
Western Blot	1:1000 – 1:30,000								
Immunoprecipitation	1 – 4 µg/mg lysate								
Immunocytochemistry	1:100 – 1:400								
ELISA	1:1000 – 1:30,000; for coating plates 1:100 – 1:500								
APPLICATION NOTES	<p>All western blot analysis is performed using 5% Milk-TBST for blocking and as antibody diluent. Primary antibody is incubated overnight.</p> <p>Western blots are performed using Donkey anti-Goat IgG Heavy and Light Chain Antibody (A50-101P).</p>								
ADDITIONAL INFO	<p>https://www.fortislife.com/p/A190-134A</p> <p>Use the link above to view SDS, a current list of citations, and other product specific information.</p>								

This document certifies that this product has met all of the quality control standards defined by Bethyl Laboratories, Inc.
Michael Spencer, PhD Date: September 4, 2024

**Detection of S-Tag-tagged protein by western blot.**

Samples: 200, 100, or 50 ng of E. coli whole cell lysate expressing a multi-tag fusion protein. *Antibodies:* Affinity purified, goat anti-S-Tag antibody A190-134A used for WB at 0.04 µg/ml (1:25,000). *Detection:* Chemiluminescence with an exposure time of 30 seconds.