



# SZABO SCANDIC

Part of Europa Biosite

## Produktinformation



Forschungsprodukte & Biochemikalien



Zellkultur & Verbrauchsmaterial



Diagnostik & molekulare Diagnostik



Laborgeräte & Service

Weitere Information auf den folgenden Seiten!  
See the following pages for more information!



### Lieferung & Zahlungsart

siehe unsere [Liefer- und Versandbedingungen](#)

### Zuschläge

- Mindermengenzuschlag
- Trockeneiszuschlag
- Gefahrgutzuschlag
- Expressversand

### SZABO-SCANDIC HandelsgmbH

Quellenstraße 110, A-1100 Wien

T. +43(0)1 489 3961-0

F. +43(0)1 489 3961-7

[mail@szabo-scandic.com](mailto:mail@szabo-scandic.com)

[www.szabo-scandic.com](http://www.szabo-scandic.com)

[linkedin.com/company/szaboscandic](https://www.linkedin.com/company/szaboscandic) 

# ECS (DYKDDDDK) Tag Recombinant Monoclonal Antibody [BLRE00G]

Rabbit Recombinant Monoclonal

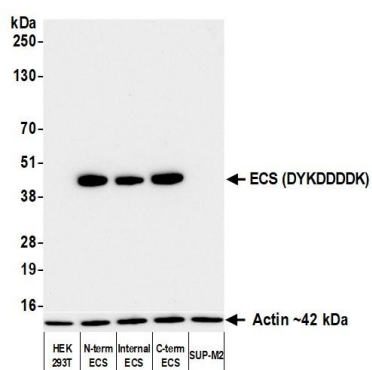
Purified

Catalog No. A191-100

Lot No. 2

<b>APPLICATIONS</b>	WB, IP, ICC, ELISA
<b>AMOUNT</b>	100 µl (50+ tests)
<b>CONCENTRATION</b>	100 µg/ml
<b>STORAGE/SHELF LIFE</b>	2 – 8°C / 1 year from date of receipt
<b>PHYSICAL STATE</b>	Liquid
<b>BUFFER</b>	Phosphate Buffered Saline (PBS) with 0.1% BSA and 0.09% Sodium Azide
<b>ISOTYPE</b>	IgG
<b>CLONE #</b>	BLRE00G
<b>ORIGIN</b>	USA
<b>PRODUCTION PROCEDURES</b>	Recombinant antibody was purified from cell culture supernatant.  Immunogen was a peptide representing ECS, Enterokinase Cleavage Site (DYKDDDDK)
<b>APPLICATIONS</b>	Centrifuge tube to remove product from lid. Optimal working dilutions should be determined experimentally by the investigator. Prepare working dilution immediately before use.  Western Blot 1:1000 Immunoprecipitation 20 µl/mg lysate Immunocytochemistry 1:1000 to 1:5000. Epitope retrieval with citrate buffer pH6.0 is recommended for FFPE cell sections. ELISA 1:1000 – 1:75,000; for coating plates 1:100 – 1:500
<b>APPLICATION NOTES</b>	All western blot analysis is performed using 5% Milk-TBST for blocking and as antibody diluent. Primary antibody is incubated overnight.  Western blots of cell lysates are performed using Goat anti-Rabbit IgG Heavy and Light Chain Antibody (A120-101P).  Western blots of immunoprecipitates are performed using Goat anti-Rabbit Light Chain HRP Conjugate (A120-113P) with 5% Normal Pig Serum (S100-020) added to the blocking buffer.
<b>ADDITIONAL INFO</b>	<a href="https://www.fortislifesciences.com/p/A191-100">https://www.fortislifesciences.com/p/A191-100</a> Use the link above to view SDS, a current list of citations, and other product specific information.

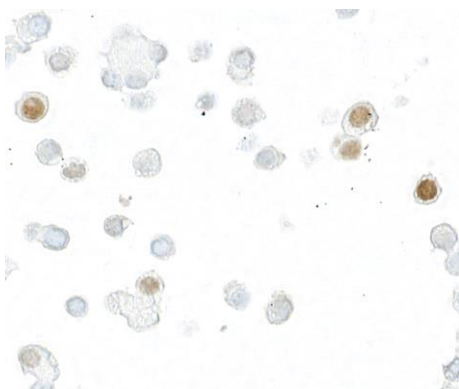
This document certifies that this product has met all of the quality control standards defined by Bethyl Laboratories, Inc.  
Michael Spencer, PhD Date: July 22, 2024



#### Detection of human ECS (DYKDDDDK) by western blot.

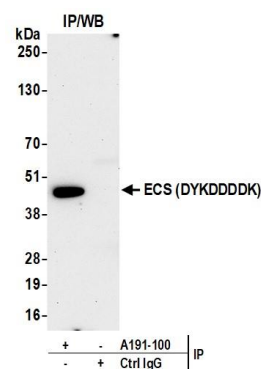
**Samples:** Whole cell lysate (50 µg) from HEK293T, HEK293T expressing ECS-IDO1 (N-terminal), HEK293T expressing IDO1-ECS-HIS (internal), HEK293T expressing IDO1-ECS (C-terminal) and SUP-M2 cells. **Antibody:** Rabbit anti-ECS (DYKDDDDK) recombinant monoclonal antibody [BLRE00G] (A191-100 lot 2) used at 1:1000. **Secondary:** HRP-conjugated goat anti-rabbit IgG (A120-101P).

**Detection:** Chemiluminescence with an exposure time of 3 minutes. Lower Panel: Rabbit anti-Actin recombinant monoclonal antibody [BLR057F] (A700-057).



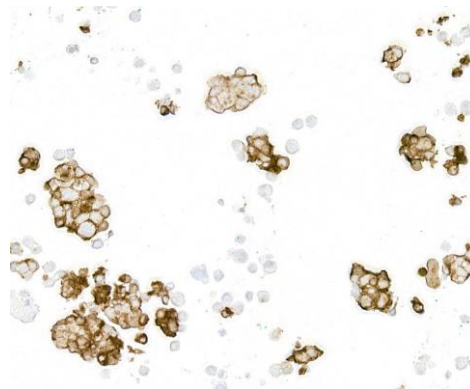
#### Detection of ECS (DYKDDDDK) Tag in FFPE HEK293 cells expressing ECS (DYKDDDDK)-tagged nuclear protein by ICC.

**Antibody:** Rabbit anti-ECS (DYKDDDDK) Tag recombinant monoclonal antibody [BLRE00G] (A191-100 lot 2). **Secondary:** HRP-conjugated goat anti-rabbit IgG (A120-501P). **Substrate:** DAB.



#### Detection of human ECS (DYKDDDDK) tag by western blot of immunoprecipitates.

**Samples:** Whole cell lysate (1.0 mg per IP reaction; 20% of IP loaded) from HEK293T expressing ECS (DYKDDDDK) tagged IDO1. **Antibody:** Rabbit anti-ECS (DYKDDDDK) recombinant monoclonal antibody [BLRE00G] (A191-100 lot 2) used at 20 µl/mg lysate. For blotting immunoprecipitated ECS (DYKDDDDK) tag, A191-100 was used at 1:1000. **Detection:** Chemiluminescence with an exposure time of 3 minutes.



#### Detection of ECS (DYKDDDDK) Tag in FFPE HEK293 cells expressing an ECS (DYKDDDDK)-tagged cytoplasmic protein by ICC.

**Antibody:** Rabbit anti-ECS (DYKDDDDK) Tag recombinant monoclonal antibody [BLRE00G] (A191-100 lot 2). **Secondary:** HRP-conjugated goat antirabbit IgG (A120-501P). **Substrate:** DAB.