



# SZABO SCANDIC

Part of Europa Biosite

## Produktinformation



Forschungsprodukte & Biochemikalien



Zellkultur & Verbrauchsmaterial



Diagnostik & molekulare Diagnostik



Laborgeräte & Service

Weitere Information auf den folgenden Seiten!  
See the following pages for more information!



### Lieferung & Zahlungsart

siehe unsere [Liefer- und Versandbedingungen](#)

### Zuschläge

- Mindermengenzuschlag
- Trockeneiszuschlag
- Gefahrgutzuschlag
- Expressversand

### SZABO-SCANDIC HandelsgmbH

Quellenstraße 110, A-1100 Wien

T. +43(0)1 489 3961-0

F. +43(0)1 489 3961-7

[mail@szabo-scandic.com](mailto:mail@szabo-scandic.com)

[www.szabo-scandic.com](http://www.szabo-scandic.com)

[linkedin.com/company/szaboscandic](https://www.linkedin.com/company/szaboscandic) 

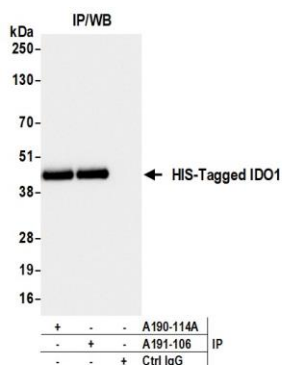
HIS-Tag Recombinant Monoclonal Antibody  
[BLRE06M]



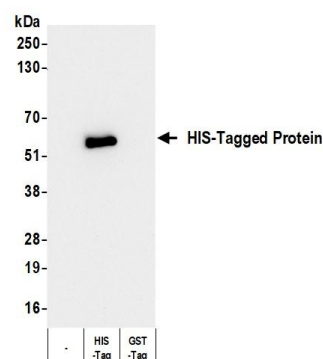
Rabbit Recombinant Monoclonal  
Purified  
Catalog No. A191-106  
Lot No. 1

APPLICATIONS	WB, IP
AMOUNT	100 µl (10 blots)
CONCENTRATION	100 µg/ml
STORAGE/SHELF LIFE	2 – 8°C / 1 year from date of receipt
PHYSICAL STATE	Liquid
BUFFER	Phosphate Buffered Saline (PBS) with 0.1% BSA and 0.09% Sodium Azide
ISOTYPE	IgG
CLONE #	BLRE06M
ORIGIN	USA
PRODUCTION PROCEDURES	Recombinant antibody was purified from cell culture supernatant.  Immunogen was a peptide representing a 6X HIS tag (HHHHHH).
APPLICATIONS	Centrifuge tube to remove product from lid. Optimal working dilutions should be determined experimentally by the investigator. Prepare working dilution immediately before use.  Western Blot 1:1,000 Immunoprecipitation 20 µl/mg lysate
APPLICATION NOTES	All western blot analysis is performed using 5% Milk-TBST for blocking and as antibody diluent. Primary antibody is incubated overnight. Western blots of cell lysates are performed using Goat anti-Rabbit IgG Heavy and Light Chain Antibody (A120-101P). Western blots of immunoprecipitates are performed using Goat anti-Rabbit Light Chain HRP Conjugate (A120-113P) with 5% Normal Pig Serum (S100-020) added to the blocking buffer.
ADDITIONAL INFO	<a href="https://www.fortislife.com/p/A191-106">https://www.fortislife.com/p/A191-106</a> Use the link above to view SDS, a current list of citations, and other product specific information.

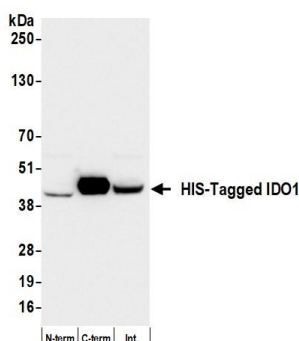
This document certifies that this product has met all of the quality control standards defined by Bethyl Laboratories, Inc.  
Michael Spencer, PhD Date: November 6, 2024



**Detection of HIS-Tagged protein by western blot of immunoprecipitates.** *Samples:* Whole cell lysate (1.0 mg per IP reaction; 20% of IP loaded) from 293T cells expressing His-tagged IDO1. *Antibodies:* Rabbit anti-HIS-Tag recombinant monoclonal antibody [BLRE06M] (A191-106) used for IP at 20 µl/mg lysate. HIS-Tag was also immunoprecipitated by a second antibody against HIS-Tag (A190-114A). For blotting immunoprecipitated HIS-Tag, A191-106 was used at 1:1000. *Detection:* Chemiluminescence with an exposure time of 1 second.



**Detection of HIS-Tagged protein by western blot.** *Samples:* Whole cell lysate (5 µg) from E. coli expressing empty vector (-), HIS-tagged protein (HIS-tag), or GST-tagged protein (GST-tag). *Antibody:* Rabbit anti-HIS-Tagged Protein recombinant monoclonal antibody [BLRE06M] (A191-106) used at 1:1000. *Secondary:* HRP-conjugated goat anti-rabbit IgG (A120-101P). *Detection:* Chemiluminescence with an exposure time of 30 seconds.



**Detection of HIS-Tagged protein by western blot.** *Samples:* Whole cell lysate (50 µg) from HEK293T cells overexpressing HIS-IDO1 (N-term), IDO1-HIS (C-term) or IDO1-HIS-DYK (int.). *Antibody:* Rabbit anti-HIS-Tag recombinant monoclonal antibody [BLRE06M] (A191-106) used at 1:1000. *Secondary:* HRP-conjugated goat anti-rabbit IgG (A120-101P). *Detection:* Chemiluminescence with an exposure time of 3 seconds.