



SZABO SCANDIC

Part of Europa Biosite

Produktinformation



Forschungsprodukte & Biochemikalien



Zellkultur & Verbrauchsmaterial



Diagnostik & molekulare Diagnostik



Laborgeräte & Service

Weitere Information auf den folgenden Seiten!
See the following pages for more information!



Lieferung & Zahlungsart

siehe unsere [Liefer- und Versandbedingungen](#)

Zuschläge

- Mindermengenzuschlag
- Trockeneiszuschlag
- Gefahrgutzuschlag
- Expressversand

SZABO-SCANDIC HandelsgmbH

Quellenstraße 110, A-1100 Wien

T. +43(0)1 489 3961-0

F. +43(0)1 489 3961-7

mail@szabo-scandic.com

www.szabo-scandic.com

[linkedin.com/company/szaboscandic](https://www.linkedin.com/company/szaboscandic) 

Phospho BRCA1 (S1524) Antibody

Rabbit Polyclonal

Antigen Affinity Purified Protein ID NP_009225.1

Catalog No. A300-001A-T GenelD 672

Lot No. A300-001A-T-2

APPLICATIONS	WB
SPECIES REACTIVITY	Human
PRESUMED REACTIVITY	Based on 100% sequence identity, this antibody is predicted to react with Gorilla and Chimpanzee
AMOUNT	10 µl
CONCENTRATION	1000 µg/ml
STORAGE/SHELF LIFE	2 – 8°C / 1 year from date of receipt
PHYSICAL STATE	Liquid
BUFFER	Tris-citrate/phosphate buffer, pH 7 to 8 containing 0.09% Sodium Azide
ISOTYPE	IgG
ORIGIN	USA
PRODUCTION PROCEDURES	Antibody was affinity purified using an epitope specific to Phospho BRCA1 (S1524) immobilized on solid support.

Immunogen for A300-001A-T was a phosphorylated synthetic peptide, which represented a portion of human Breast Cancer Gene 1 (GenelD 672) around serine 1524 according to the numbering given in entry NP_009225.1.

Immunoglobulin concentration was determined by extinction coefficient: absorbance at 280 nm of 1.4 equals 1.0 mg of IgG.

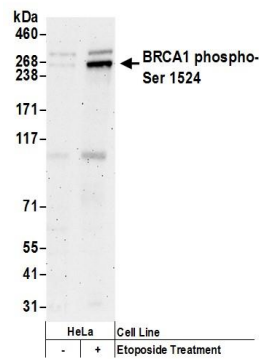
APPLICATIONS Centrifuge tube to remove product from lid. Optimal working dilutions should be determined experimentally by the investigator. Prepare working dilution immediately before use.

Western Blot 1:500 – 1:5,000

ADDITIONAL INFO <https://www.bethyl.com/product/A300-001A-T>

Use the link above to view SDS, a current list of citations, and other product specific information.

This document certifies that this product has met all of the quality control standards defined by Bethyl Laboratories, Inc.
Michael Spencer, PhD Date: June 6, 2022



Detection of human Phospho BRCA1 (S1524) by western blot. *Samples:* Whole cell lysate (50 µg) from HeLa cells either treated with etoposide (+) or mock treated (-). *Antibody:* Affinity purified rabbit anti-Phospho BRCA1 (S1524) antibody A300-001A (lot A300-001A-2) used for WB at 1 µg/ml. *Detection:* Chemiluminescence with an exposure time of 3 minutes.