



# SZABO SCANDIC

Part of Europa Biosite

## Produktinformation



Forschungsprodukte & Biochemikalien



Zellkultur & Verbrauchsmaterial



Diagnostik & molekulare Diagnostik



Laborgeräte & Service

Weitere Information auf den folgenden Seiten!  
See the following pages for more information!



### Lieferung & Zahlungsart

siehe unsere [Liefer- und Versandbedingungen](#)

### Zuschläge

- Mindermengenzuschlag
- Trockeneiszuschlag
- Gefahrgutzuschlag
- Expressversand

### SZABO-SCANDIC HandelsgmbH

Quellenstraße 110, A-1100 Wien

T. +43(0)1 489 3961-0

F. +43(0)1 489 3961-7

[mail@szabo-scandic.com](mailto:mail@szabo-scandic.com)

[www.szabo-scandic.com](http://www.szabo-scandic.com)

[linkedin.com/company/szaboscandic](https://www.linkedin.com/company/szaboscandic) 

# Phospho BRCA1 (S1280) Antibody

Rabbit Polyclonal

Antigen Affinity Purified	RefSeq ID	NP_009225.1
Catalog No. A300-004A	Uniprot ID	P38398
Lot No. 2	GenelD	672

<b>APPLICATIONS</b>	WB, IP
<b>SPECIES REACTIVITY</b>	Human
<b>PRESUMED REACTIVITY</b>	Based on 100% sequence identity, this antibody is predicted to react with Monkey and Chimpanzee
<b>AMOUNT</b>	100 µl
<b>CONCENTRATION</b>	1000 µg/ml
<b>STORAGE/SHELF LIFE</b>	2 – 8°C / 1 year from date of receipt
<b>PHYSICAL STATE</b>	Liquid
<b>BUFFER</b>	Tris-citrate/phosphate buffer, pH 7 to 8 containing 0.09% Sodium Azide
<b>ISOTYPE</b>	IgG
<b>ORIGIN</b>	USA
<b>PRODUCTION PROCEDURES</b>	Antibody was affinity purified using an epitope specific to Phospho BRCA1 (S1280) immobilized on solid support.

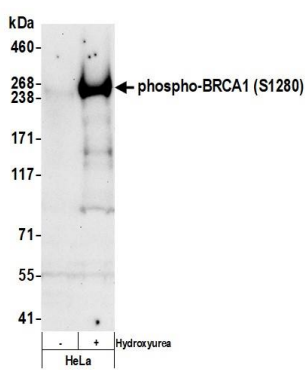
Immunogen for A300-004A was a phosphorylated synthetic peptide, which represented a portion of human Breast Cancer Gene 1 (GenelD 672) around serine 1280 according to the numbering given in entry NP\_009225.1.

Immunoglobulin concentration was determined by extinction coefficient: absorbance at 280 nm of 1.4 equals 1.0 mg of IgG.

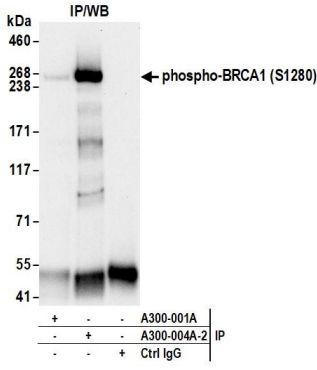
<b>APPLICATIONS</b>	Centrifuge tube to remove product from lid. Optimal working dilutions should be determined experimentally by the investigator. Prepare working dilution immediately before use.
	Western Blot 1:1,000 – 1:10,000
	Immunoprecipitation 2.5 µg/mg lysate

<b>ADDITIONAL INFO</b>	<a href="https://www.fortislifesciences.com/p/A300-004A">https://www.fortislifesciences.com/p/A300-004A</a> Use the link above to view SDS, a current list of citations, and other product specific information.
------------------------	---

This document certifies that this product has met all of the quality control standards defined by Bethyl Laboratories, Inc.  
Michael Spencer, PhD Date: September 27, 2023



**Detection of human phospho-BRCA1 (S1280) by western blot.** *Samples:* Whole cell lysate (50 µg) from HeLa cells untreated (-) or treated (+) with Hydroxyurea. *Antibody:* Affinity purified rabbit anti-phospho-BRCA1 (S1280) antibody (A300-004A lot 2) used for WB at 1 µg/ml. *Detection:* Chemiluminescence with an exposure time of 3 minutes.



**Detection of human phospho-BRCA1 (S1280) by western blot of immunoprecipitates.** *Samples:* Whole cell lysate (1.0 mg per IP reaction; 20% of IP loaded) from HeLa cells treated with Hydroxyurea. *Antibodies:* Affinity purified rabbit anti-phospho-BRCA1 (S1280) antibody (A300-004A lot 2) used for IP at 6 µg per reaction. Phospho-BRCA1 (S1280) was also immunoprecipitated by a second phospho-BRCA1 antibody (A300-001A). For blotting immunoprecipitated phospho-BRCA1 (S1280), A300-004A was used at 1 µg/ml. *Detection:* Chemiluminescence with an exposure time of 30 seconds.