



SZABO SCANDIC

Part of Europa Biosite

Produktinformation



Forschungsprodukte & Biochemikalien



Zellkultur & Verbrauchsmaterial



Diagnostik & molekulare Diagnostik



Laborgeräte & Service

Weitere Information auf den folgenden Seiten!
See the following pages for more information!



Lieferung & Zahlungsart

siehe unsere [Liefer- und Versandbedingungen](#)

Zuschläge

- Mindermengenzuschlag
- Trockeneiszuschlag
- Gefahrgutzuschlag
- Expressversand

SZABO-SCANDIC HandelsgmbH

Quellenstraße 110, A-1100 Wien

T. +43(0)1 489 3961-0

F. +43(0)1 489 3961-7

mail@szabo-scandic.com

www.szabo-scandic.com

[linkedin.com/company/szaboscandic](https://www.linkedin.com/company/szaboscandic) 

BRCA2 Antibody

Rabbit Polyclonal

Antigen Affinity Purified

Protein ID NP_000050.1

Catalog No. A300-005A

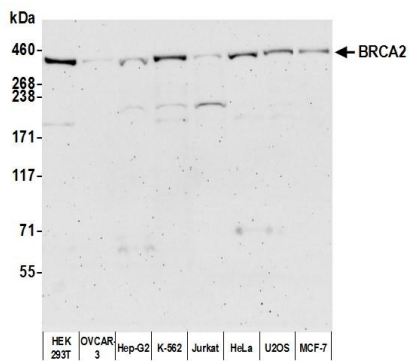
GeneID 675

Lot No. A300-005A-4

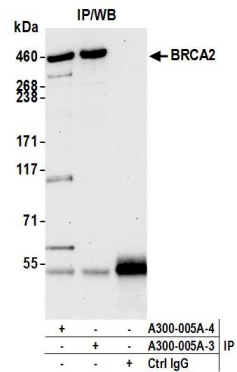


APPLICATIONS	WB, IP
SPECIES REACTIVITY	Human
AMOUNT	100 µl
CONCENTRATION	1000 µg/ml
STORAGE/SHELF LIFE	2 – 8° C / 1 year from date of receipt
PHYSICAL STATE	Liquid
BUFFER	Tris-citrate/phosphate buffer, pH 7 to 8 containing 0.09% Sodium Azide
ISOTYPE	IgG
ORIGIN	USA
PRODUCTION PROCEDURES	<p>Antibody was affinity purified using an epitope specific to BRCA2 immobilized on solid support.</p> <p>The epitope recognized by A300-005A maps to a region between residue 3350 and the C-terminus (residue 3418) of human Breast Cancer Gene 2 using the numbering given in entry NP_000050.1 (GeneID 675).</p> <p>Immunoglobulin concentration was determined by extinction coefficient: absorbance at 280 nm of 1.4 equals 1.0 mg of IgG.</p>
APPLICATIONS	<p>Centrifuge tube to remove product from lid. Optimal working dilutions should be determined experimentally by the investigator. Prepare working dilution immediately before use.</p> <p>Western Blot 1:2,000 – 1:10,000</p> <p>Immunoprecipitation 2 – 10 µg/mg lysate</p>
APPLICATION NOTES	<p>Western blot of immunoprecipitates performed using Normal Pig Serum (Cat. No. S100-020), Goat anti-Rabbit Light Chain HRP Conjugate (Cat. No. A120-113P) and 3-8% SDS-PAGE (link to IP-western blot protocol in Additional Info section below).</p> <p>Western blot of lysates performed using standard western blot reagents and 3-8% SDS-PAGE.</p>
ADDITIONAL INFO	<p>https://www.bethyl.com/product/A300-005A</p> <p>Use the link above to view SDS, a current list of citations, and other product specific information.</p> <p>IP-western blot protocol: https://www.bethyl.com/content/protocol_IP_WB</p>

This document certifies that this product has met all of the quality control standards defined by Bethyl Laboratories, Inc.
Eric McIntush, PhD | Chief Scientific Officer Date: June 21, 2019



Detection of human BRCA2 by western blot. *Samples:* Whole cell lysate (50 µg) from HEK293T, OVCAR-3, Hep-G2, K-562, Jurkat, HeLa, U2OS, and MCF-7 cells prepared using NETN lysis buffer. *Antibody:* Rabbit anti-BRCA2 antibody A300-005A (lot A300-005A-4) for WB at 0.1 µg/ml. *Detection:* Chemiluminescence with an exposure time of 3 minutes.



Detection of human BRCA2 by western blot of immunoprecipitates. *Samples:* Whole cell lysate (1.0 mg per IP reaction; 20% of IP loaded) from HEK293T cells prepared using NETN lysis buffer. *Antibodies:* Rabbit anti-BRCA2 antibody A300-005A (lot A300-005A-4) used for IP at 6 µg per reaction. BRCA2 was also immunoprecipitated by a previous lot of this antibody (lot A300-005A-3). For blotting immunoprecipitated BRCA2, A300-005A was used at 0.1 µg/ml. *Detection:* Chemiluminescence with an exposure time of 30 seconds.