



SZABO SCANDIC

Part of Europa Biosite

Produktinformation



Forschungsprodukte & Biochemikalien



Zellkultur & Verbrauchsmaterial



Diagnostik & molekulare Diagnostik



Laborgeräte & Service

Weitere Information auf den folgenden Seiten!
See the following pages for more information!



Lieferung & Zahlungsart

siehe unsere [Liefer- und Versandbedingungen](#)

Zuschläge

- Mindermengenzuschlag
- Trockeneiszuschlag
- Gefahrgutzuschlag
- Expressversand

SZABO-SCANDIC HandelsgmbH

Quellenstraße 110, A-1100 Wien

T. +43(0)1 489 3961-0

F. +43(0)1 489 3961-7

mail@szabo-scandic.com

www.szabo-scandic.com

[linkedin.com/company/szaboscandic](https://www.linkedin.com/company/szaboscandic) 

CSN5 Antibody

Rabbit Polyclonal

Antigen Affinity Purified

Protein ID NP_006828.2

Catalog No. A300-014A-T

GeneID 10987

Lot No. A300-014A-T-1

APPLICATIONS	WB, IHC
SPECIES REACTIVITY	Human, Mouse
PRESUMED REACTIVITY	Based on 100% sequence identity, this antibody is predicted to react with Zebrafish, <i>X. laevis</i> and <i>X. tropicalis</i>
AMOUNT	10 µl
CONCENTRATION	1000 µg/ml
STORAGE/SHELF LIFE	2 – 8°C / 1 year from date of receipt
PHYSICAL STATE	Liquid
BUFFER	Tris-citrate/phosphate buffer, pH 7 to 8 containing 0.09% Sodium Azide
ISOTYPE	IgG
ORIGIN	USA
PRODUCTION PROCEDURES	Antibody was affinity purified using an epitope specific to CSN5 immobilized on solid support.

The epitope recognized by A300-014A-T maps to a region between residues 175 and 225 of human COP9 constitutive photomorphogenic homolog subunit 5 using the numbering given in entry NP_006828.2 (GeneID 10987).

Immunoglobulin concentration was determined by extinction coefficient: absorbance at 280 nm of 1.4 equals 1.0 mg of IgG.

APPLICATIONS Centrifuge tube to remove product from lid. Optimal working dilutions should be determined experimentally by the investigator. Prepare working dilution immediately before use.

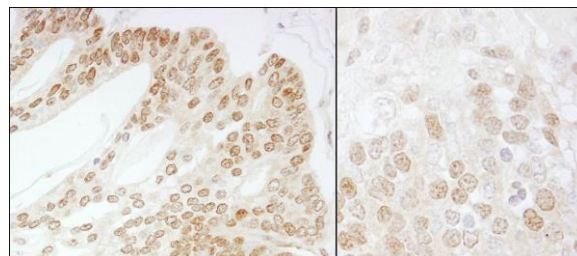
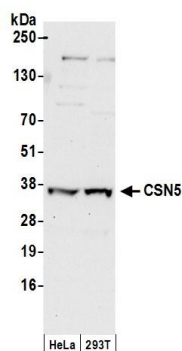
Western Blot 1:5,000 – 1:25,000

Immunohistochemistry 1:250 – 1:2,000. Epitope retrieval with Tris-EDTA pH 9.0 is recommended for FFPE tissue sections.

ADDITIONAL INFO <https://www.bethyl.com/product/A300-014A-T>

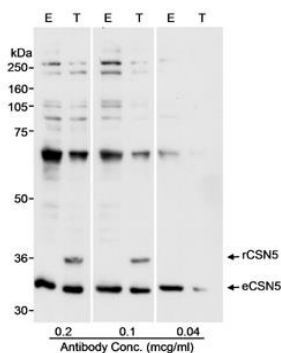
Use the link above to view SDS, a current list of citations, and other product specific information.

This document certifies that this product has met all of the quality control standards defined by Bethyl Laboratories, Inc.
Michael Spencer, PhD Date: June 6, 2022



Detection of human CSN5 by western blot. *Samples:* Whole cell lysate (50 μ g) from HeLa and HEK293T cells prepared using NETN lysis buffer. *Antibodies:* Affinity purified rabbit anti-CSN5 antibody A300-014A (lot A300-014A-1) used for WB at 0.2 μ g/ml. *Detection:* Chemiluminescence with an exposure time of 10 seconds.

Detection of human and mouse CSN5 by immunohistochemistry. *Sample:* FFPE section of human prostate carcinoma (left) and mouse teratoma (right). *Antibody:* Affinity purified rabbit anti-CSN5 (Cat. No. A300-014A) used at a dilution of 1:500 (2 μ g/ml). *Detection:* DAB



Detection of human CSN5 by western blot. *Samples:* Whole cell lysate (50 μ g-E; 25 μ g-T) from HEK HEK293T cells that were mock transfected (E) or transfected with a CSN5 expression construct (T). *Antibody:* Affinity purified rabbit anti-CSN5 antibody A300-014A used at the indicated concentrations. *Detection:* Chemiluminescence with a 10 second exposure.