



# SZABO SCANDIC

Part of Europa Biosite

## Produktinformation



Forschungsprodukte & Biochemikalien



Zellkultur & Verbrauchsmaterial



Diagnostik & molekulare Diagnostik



Laborgeräte & Service

Weitere Information auf den folgenden Seiten!  
See the following pages for more information!



### Lieferung & Zahlungsart

siehe unsere [Liefer- und Versandbedingungen](#)

### Zuschläge

- Mindermengenzuschlag
- Trockeneiszuschlag
- Gefahrgutzuschlag
- Expressversand

### SZABO-SCANDIC HandelsgmbH

Quellenstraße 110, A-1100 Wien

T. +43(0)1 489 3961-0

F. +43(0)1 489 3961-7

[mail@szabo-scandic.com](mailto:mail@szabo-scandic.com)

[www.szabo-scandic.com](http://www.szabo-scandic.com)

[linkedin.com/company/szaboscandic](https://www.linkedin.com/company/szaboscandic) 

# DNMT1 Antibody

Rabbit Polyclonal

Antigen Affinity Purified

Catalog No. A300-041A

Lot No. A300-041A-1

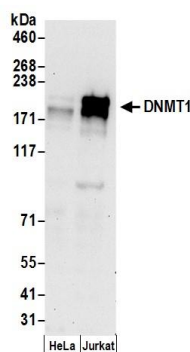
Protein ID NP\_001370.1

GeneID 1786

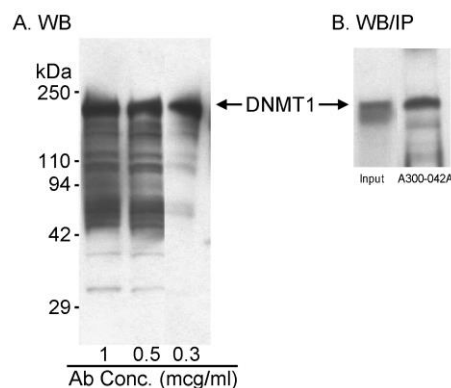


APPLICATIONS	WB
SPECIES REACTIVITY	Human
AMOUNT	100 µl
CONCENTRATION	1000 µg/ml
STORAGE/SHELF LIFE	2 – 8° C / 1 year from date of receipt
PHYSICAL STATE	Liquid
BUFFER	Tris-citrate/phosphate buffer, pH 7 to 8 containing 0.09% Sodium Azide
ISOTYPE	IgG
ORIGIN	USA
PRODUCTION PROCEDURES	<p>Antibody was affinity purified using an epitope specific to DNMT1 immobilized on solid support.</p> <p>The epitope recognized by A300-041A maps to a region between residue 350 and 400 of human DNA-Methyltransferase 1 using the numbering given in entry NP_001370.1 (GeneID 1786).</p> <p>Immunoglobulin concentration was determined by extinction coefficient: absorbance at 280 nm of 1.4 equals 1.0 mg of IgG.</p>
APPLICATIONS	<p>Centrifuge tube to remove product from lid. Optimal working dilutions should be determined experimentally by the investigator. Prepare working dilution immediately before use.</p> <p>Western Blot 1:1,000 – 1:10,000</p> <p>Immunoprecipitation Not recommended. Use rabbit anti-DNMT1 antibody A300-042A.</p>
APPLICATION NOTES	Western blot of lysates performed using standard western blot reagents and 4–8% SDS-PAGE.
ADDITIONAL INFO	<p><a href="https://www.bethyl.com/product/A300-041A">https://www.bethyl.com/product/A300-041A</a></p> <p>Use the link above to view SDS, a current list of citations, and other product specific information.</p>

This document certifies that this product has met all of the quality control standards defined by Bethyl Laboratories, Inc.  
Eric McIntush, PhD | Chief Scientific Officer Date: June 21, 2019



**Detection of human DNMT1 by western blot.** *Samples:* Whole cell lysate (50 µg) from HeLa and Jurkat cells prepared using NETN lysis buffer. *Antibodies:* Affinity purified rabbit anti-DNMT1 antibody A300-041A (lot A300-041A-1) used for WB at 0.05 µg/ml. *Detection:* Chemiluminescence with an exposure time of 30 seconds.



**Detection of human DNMT1 by western blot and immunoprecipitation.** *Samples:* Nuclear extract [50 µg/lane for A; 10 µg (input) or 1 mg (A300-042A IP) for B] from HeLa cells. *Antibodies:* A. Affinity purified rabbit anti-DNMT1 antibody A300-041A used at the indicated concentrations for WB. B. DNMT1 immunoprecipitated with affinity purified rabbit anti-DNMT1 antibody A300-042A then detected with affinity purified rabbit anti-DNMT1 antibody A300-041A used at 0.2 µg/ml for WB. *Detection:* Chemiluminescence with an exposure time of 2 seconds.