



SZABO SCANDIC

Part of Europa Biosite

Produktinformation



Forschungsprodukte & Biochemikalien



Zellkultur & Verbrauchsmaterial



Diagnostik & molekulare Diagnostik



Laborgeräte & Service

Weitere Information auf den folgenden Seiten!
See the following pages for more information!



Lieferung & Zahlungsart

siehe unsere [Liefer- und Versandbedingungen](#)

Zuschläge

- Mindermengenzuschlag
- Trockeneiszuschlag
- Gefahrgutzuschlag
- Expressversand

SZABO-SCANDIC HandelsgmbH

Quellenstraße 110, A-1100 Wien

T. +43(0)1 489 3961-0

F. +43(0)1 489 3961-7

mail@szabo-scandic.com

www.szabo-scandic.com

[linkedin.com/company/szaboscandic](https://www.linkedin.com/company/szaboscandic) 

ROCK2 Antibody

Rabbit Polyclonal

Antigen Affinity Purified

Protein ID NP_004841.1

Catalog No. A300-047A-T

GeneID 9475

Lot No. A300-047A-T-1

APPLICATIONS	WB, IP
SPECIES REACTIVITY	Human
PRESUMED REACTIVITY	Based on 100% sequence identity, this antibody is predicted to react with Mouse, Rat and Bovine
AMOUNT	10 µl
CONCENTRATION	1000 µg/ml
STORAGE/SHELF LIFE	2 – 8°C / 1 year from date of receipt
PHYSICAL STATE	Liquid
BUFFER	Tris-citrate/phosphate buffer, pH 7 to 8 containing 0.09% Sodium Azide
ISOTYPE	IgG
ORIGIN	USA
PRODUCTION PROCEDURES	Antibody was affinity purified using an epitope specific to ROCK2 immobilized on solid support.

The epitope recognized by A300-047A-T maps to a region between residues 1320 and the C-terminus (residues 1388) of human ROCK2 using the number given in entry NP_004841.1 (GeneID 9475).

Immunoglobulin concentration was determined by extinction coefficient: absorbance at 280 nm of 1.4 equals 1.0 mg of IgG.

APPLICATIONS Centrifuge tube to remove product from lid. Optimal working dilutions should be determined experimentally by the investigator. Prepare working dilution immediately before use.

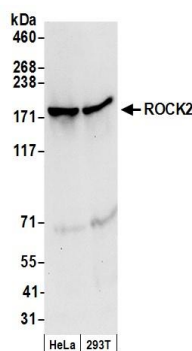
Western Blot 1:10,000 – 1:25,000

Immunoprecipitation 2 – 5 µg/mg lysate

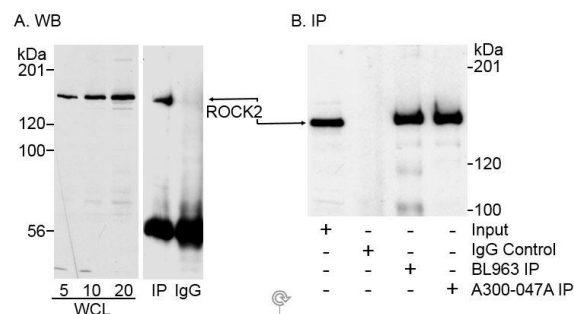
ADDITIONAL INFO <https://www.bethyl.com/product/A300-047A-T>

Use the link above to view SDS, a current list of citations, and other product specific information.
IP-western blot protocol: https://www.bethyl.com/content/protocol_IP_WB

This document certifies that this product has met all of the quality control standards defined by Bethyl Laboratories, Inc.
Michael Spencer, PhD Date: June 6, 2022



Detection of human ROCK2 by western blot. *Samples:* Whole cell lysate (50 µg) from HeLa and HEK293T cells prepared using NETN lysis buffer. *Antibodies:* Affinity purified rabbit anti-ROCK2 antibody A300-047A (lot A300-047A-1) used for WB at 0.04 µg/ml. *Detection:* Chemiluminescence with an exposure time of 10 seconds.



Detection of human ROCK2 by western blot and immunoprecipitation. *Samples:* Whole cell lysate (WCL) from HeLa cells. In A, ROCK2 from 5, 10 and 20 µg of WCL or immunoprecipitated ROCK2 was detected. In B, ROCK2 was immunoprecipitated from 1 mg of WCL. *Antibodies:* A) Rabbit anti-ROCK2 antibody A300-047A was used at 0.06 µg/ml to detect ROCK2 in WCL and ROCK2 immunoprecipitated using an antibody generated to a recombinant fragment. B) Rabbit anti-ROCK2 antibodies BL963 and A300-047A were used at 5 µg/mg lysate to immunoprecipitate ROCK2, which was detected by western blot using an antibody generated to a recombinant fragment of ROCK2. *Detection:* Chemiluminescence with exposure times of 5 to 15 seconds.