



SZABO SCANDIC

Part of Europa Biosite

Produktinformation



Forschungsprodukte & Biochemikalien



Zellkultur & Verbrauchsmaterial



Diagnostik & molekulare Diagnostik



Laborgeräte & Service

Weitere Information auf den folgenden Seiten!
See the following pages for more information!



Lieferung & Zahlungsart

siehe unsere [Liefer- und Versandbedingungen](#)

Zuschläge

- Mindermengenzuschlag
- Trockeneiszuschlag
- Gefahrgutzuschlag
- Expressversand

SZABO-SCANDIC HandelsgmbH

Quellenstraße 110, A-1100 Wien

T. +43(0)1 489 3961-0

F. +43(0)1 489 3961-7

mail@szabo-scandic.com

www.szabo-scandic.com

[linkedin.com/company/szaboscandic](https://www.linkedin.com/company/szaboscandic) 

Phospho SMC1 (S966) Antibody

Rabbit Polyclonal

Antigen Affinity Purified Protein ID NP_006297.2

Catalog No. A300-050A-T GeneID 8243

Lot No. A300-050A-T-7

APPLICATIONS WB, IP, IHC, ICC-IF

SPECIES REACTIVITY Human

AMOUNT 10 µl

CONCENTRATION 1000 µg/ml

STORAGE/SHELF LIFE 2 – 8°C / 1 year from date of receipt

PHYSICAL STATE Liquid

BUFFER Tris-citrate/phosphate buffer, pH 7 to 8 containing 0.09% Sodium Azide

ISOTYPE IgG

ORIGIN USA

PRODUCTION PROCEDURES Antibody was affinity purified using an epitope specific to phosphorylation of SMC1 at serine 966 immobilized on solid support.

Immunogen for A300-050A-T was a phosphorylated synthetic peptide, which represented a portion of human Structural Maintenance of Chromosomes 1 (GeneID 8243) around serine 966 according to the numbering given in entry NP_006297.2.

APPLICATIONS Centrifuge tube to remove product from lid. Optimal working dilutions should be determined experimentally by the investigator. Prepare working dilution immediately before use.

Western Blot 1:2,000 – 1:10,000

Immunoprecipitation 2 – 5 µg/mg lysate

Immunohistochemistry 1:1,000 to 1:5,000. Epitope retrieval with citrate buffer pH6.0 is recommended for FFPE tissue sections.

Immunofluorescence (ICC) 1:500 – 1:5,000. Formaldehyde fixation is recommended. Permeabilization with Triton-X 100 is recommended for formaldehyde-fixed cells.

ADDITIONAL INFO <https://www.bethyl.com/product/A300-050A-T>

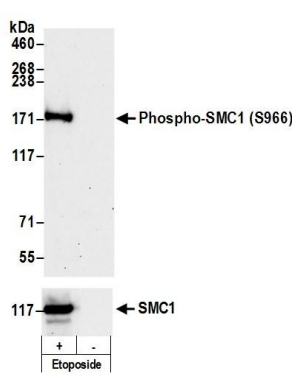
Use the link above to view SDS, a current list of citations, and other product specific information.

IP-western blot protocol: https://www.bethyl.com/content/protocol_IP_WB

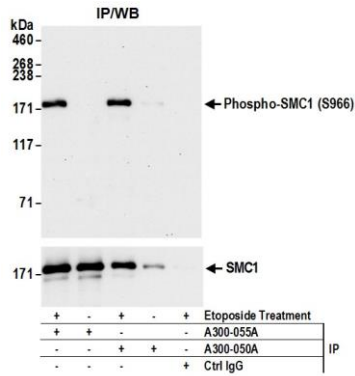
This document certifies that this product has met all of the quality control standards defined by Bethyl Laboratories, Inc.

Michael Spencer, PhD

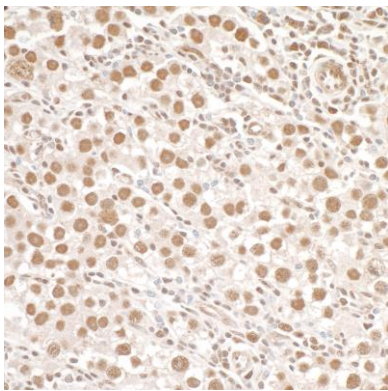
Date: June 6, 2022



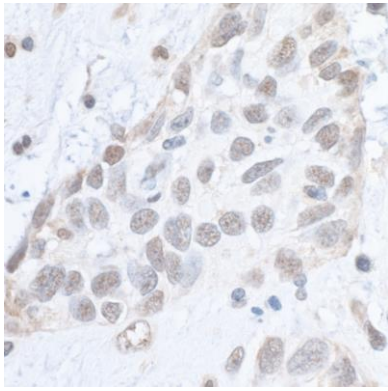
Detection of Phospho SMC1 (S966) by western blot.
Samples: Whole cell lysate (50 μg) from Jurkat cells treated with 100 μM etoposide (+) or mock treated (-). *Antibodies:* Affinity purified rabbit anti-Phospho SMC1 (S966) antibody A300-050A (lot A300-050A-7) used at 0.1 μg/ml. *Detection:* Chemiluminescence with an exposure time of 3 minutes. For detection of total SMC1, rabbit anti-SMC1 antibody A300-055A was used.



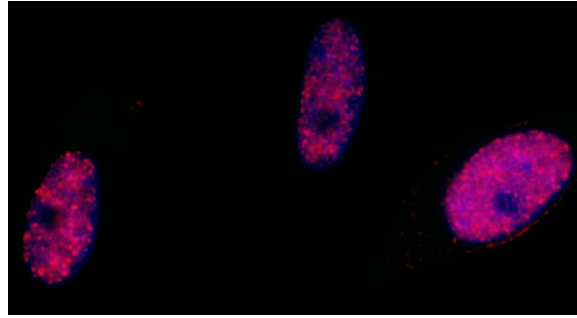
Detection of human Phospho SMC1 (S966) by western blot of immunoprecipitates. *Samples:* Whole cell lysate (1.0 mg per IP reaction; 20% of IP loaded) from Jurkat cells treated with 100 μM etoposide (+) or mock treated (-). *Antibodies:* Rabbit anti-Phospho SMC1 (S966) antibody A300-050A (lot A300-050A-7) used for IP at 3 μl per reaction. Phospho SMC1 (S966) was also immunoprecipitated by rabbit anti-SMC1 antibody (A300-055A). For blotting immunoprecipitated Phospho SMC1 (S966), A300-050A was used at 1 μg/ml. *Detection:* Chemiluminescence with an exposure time of 3 minutes. For detection of total SMC1, rabbit anti-SMC1 antibody A300-055A was used.



Detection of human Phospho SMC1 (S966) by immunohistochemistry. *Sample:* FFPE section of human testicular seminoma. *Antibody:* Affinity purified rabbit anti-Phospho SMC1 (S966) (Cat. No. A300-050A Lot 7) used at a dilution of 1:1,000 (1 μg/ml). *Detection:* DAB



Detection of human Phospho SMC1 (S966) by immunohistochemistry. *Sample:* FFPE section of human breast carcinoma. *Antibody:* Affinity purified rabbit anti-Phospho SMC1 (S966) (Cat. No. A300-050A lot 7) used at a dilution of 1:1,000 (1 μg/ml). *Detection:* DAB



Detection of human Phospho SMC1 (S966) by immunocytochemistry. *Samples:* Neocarzinostatin treated asynchronous HeLa cells. *Antibody:* Affinity purified rabbit anti-Phospho SMC1 (S966) (Cat. No. A300-050 Lot 6) used at a dilution of 1:5,000 (0.2µg/ml). *Detection:* Red fluorescent Anti-rabbit IgG-DyLight® 594 conjugated used at a dilution of 1:100.