



# SZABO SCANDIC

Part of Europa Biosite

## Produktinformation



Forschungsprodukte & Biochemikalien



Zellkultur & Verbrauchsmaterial



Diagnostik & molekulare Diagnostik



Laborgeräte & Service

Weitere Information auf den folgenden Seiten!  
See the following pages for more information!



### Lieferung & Zahlungsart

siehe unsere [Liefer- und Versandbedingungen](#)

### Zuschläge

- Mindermengenzuschlag
- Trockeneiszuschlag
- Gefahrgutzuschlag
- Expressversand

### SZABO-SCANDIC HandelsgmbH

Quellenstraße 110, A-1100 Wien

T. +43(0)1 489 3961-0

F. +43(0)1 489 3961-7

[mail@szabo-scandic.com](mailto:mail@szabo-scandic.com)

[www.szabo-scandic.com](http://www.szabo-scandic.com)

[linkedin.com/company/szaboscandic](https://www.linkedin.com/company/szaboscandic) 

# Phospho SMC1 (S966) Antibody

Rabbit Polyclonal

Antigen Affinity Purified

Protein ID NP\_006297.2

Catalog No. A300-050A

GeneID 8243

Lot No. A300-050A-7



<b>APPLICATIONS</b>	WB, IP, IHC, ICC-IF
<b>SPECIES REACTIVITY</b>	Human
<b>AMOUNT</b>	100 µl
<b>CONCENTRATION</b>	1000 µg/ml
<b>STORAGE/SHELF LIFE</b>	2 – 8° C / 1 year from date of receipt
<b>PHYSICAL STATE</b>	Liquid
<b>BUFFER</b>	Tris-citrate/phosphate buffer, pH 7 to 8 containing 0.09% Sodium Azide
<b>ISOTYPE</b>	IgG
<b>ORIGIN</b>	USA
<b>PRODUCTION PROCEDURES</b>	Antibody was affinity purified using an epitope specific to phosphorylation of SMC1 at serine 966 immobilized on solid support.

Immunogen for A300-050A was a phosphorylated synthetic peptide, which represented a portion of human Structural Maintenance of Chromosomes 1 (GeneID 8243) around serine 966 according to the numbering given in entry NP\_006297.2.

Immunoglobulin concentration was determined by extinction coefficient: absorbance at 280 nm of 1.4 equals 1.0 mg of IgG.

**APPLICATIONS** Centrifuge tube to remove product from lid. Optimal working dilutions should be determined experimentally by the investigator. Prepare working dilution immediately before use.

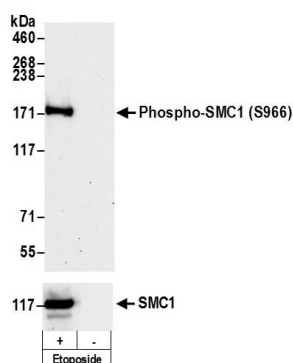
Western Blot	1:2,000 – 1:10,000
Immunoprecipitation	2 – 5 µg/mg lysate
Immunohistochemistry	1:1,000 to 1:5,000. Epitope retrieval with citrate buffer pH6.0 is recommended for FFPE tissue sections.
Immunofluorescence (ICC)	1:500 – 1:5,000. Formaldehyde fixation is recommended. Permeabilization with Triton-X 100 is recommended for formaldehyde-fixed cells.

**APPLICATION NOTES** Western blot of immunoprecipitates performed using Normal Pig Serum (Cat. No. S100-020), Goat anti-Rabbit Light Chain HRP Conjugate (Cat. No. A120-113P) and 4-8% SDS-PAGE (link to IP-western blot protocol in Additional Info section below).

**IHC HUMAN CONTROLS** Western blot of lysates performed using standard western blot reagents and 4-8% SDS-PAGE. Breast Carcinoma, Non-Small Cell Lung Cancer, Ovarian Carcinoma, Stomach Adenocarcinoma, Testicular Seminoma

**ADDITIONAL INFO** <https://www.bethyl.com/product/A300-050A>  
Use the link above to view SDS, a current list of citations, and other product specific information.  
IP-western blot protocol: [https://www.bethyl.com/content/protocol\\_IP\\_WB](https://www.bethyl.com/content/protocol_IP_WB)

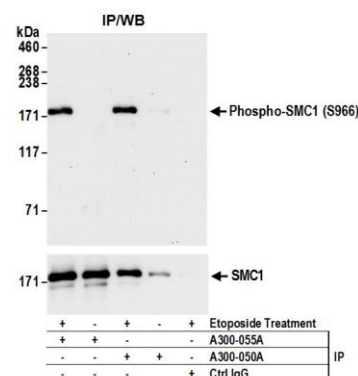
This document certifies that this product has met all of the quality control standards defined by Bethyl Laboratories, Inc.  
Eric McIntush, PhD | Chief Scientific Officer Date: June 24, 2019



#### Detection of Phospho SMC1 (S966) by western blot.

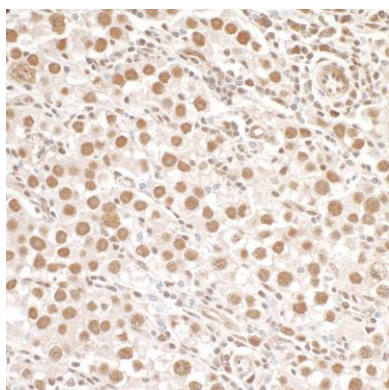
**Samples:** Whole cell lysate (50 μg) from Jurkat cells treated with 100 μM etoposide (+) or mock treated (-). **Antibodies:** Affinity purified rabbit anti-Phospho SMC1 (S966) antibody A300-050A (lot A300-050A-7) used at 0.1 μg/ml.

**Detection:** Chemiluminescence with an exposure time of 3 minutes. For detection of total SMC1, rabbit anti-SMC1 antibody A300-055A was used.

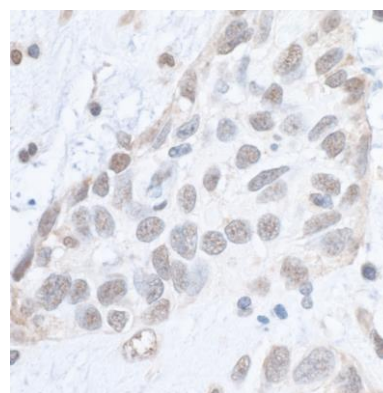


#### Detection of human Phospho SMC1 (S966) by western blot of immunoprecipitates.

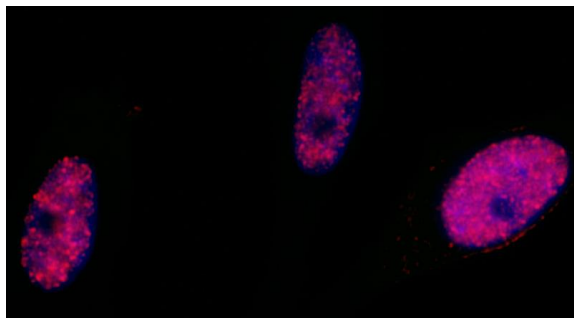
**Samples:** Whole cell lysate (1.0 mg per IP reaction; 20% of IP loaded) from Jurkat cells treated with 100 μM etoposide (+) or mock treated (-). **Antibodies:** Rabbit anti-Phospho SMC1 (S966) antibody A300-050A (lot A300-050A-7) used for IP at 3 μl per reaction. Phospho SMC1 (S966) was also immunoprecipitated by rabbit anti-SMC1 antibody (A300-055A). For blotting immunoprecipitated Phospho SMC1 (S966), A300-050A was used at 1 μg/ml. **Detection:** Chemiluminescence with an exposure time of 3 minutes. For detection of total SMC1, rabbit anti-SMC1 antibody A300-055A was used.



**Detection of human Phospho SMC1 (S966) by immunohistochemistry.** **Sample:** FFPE section of human testicular seminoma. **Antibody:** Affinity purified rabbit anti- Phospho SMC1 (S966) (Cat. No. A300-050A Lot 7) used at a dilution of 1:1,000 (1 μg/ml). **Detection:** DAB



**Detection of human Phospho SMC1 (S966) by immunohistochemistry.** **Sample:** FFPE section of human breast carcinoma. **Antibody:** Affinity purified rabbit anti-Phospho SMC1 (S966) (Cat. No. A300-050A lot 7) used at a dilution of 1:1,000 (1 μg/ml). **Detection:** DAB



**Detection of human Phospho SMC1 (S966) by immunocytochemistry.** *Samples:* Neocarzinostatin treated asynchronous HeLa cells. *Antibody:* Affinity purified rabbit anti-Phospho SMC1 (S966) (Cat. No. A300-050 Lot 6) used at a dilution of 1:5,000 (0.2µg/ml). *Detection:* Red fluorescent Anti-rabbit IgG-DyLight® 594 conjugated used at a dilution of 1:100.