



# SZABO SCANDIC

Part of Europa Biosite

## Produktinformation



Forschungsprodukte & Biochemikalien



Zellkultur & Verbrauchsmaterial



Diagnostik & molekulare Diagnostik



Laborgeräte & Service

Weitere Information auf den folgenden Seiten!  
See the following pages for more information!



### Lieferung & Zahlungsart

siehe unsere [Liefer- und Versandbedingungen](#)

### Zuschläge

- Mindermengenzuschlag
- Trockeneiszuschlag
- Gefahrgutzuschlag
- Expressversand

### SZABO-SCANDIC HandelsgmbH

Quellenstraße 110, A-1100 Wien

T. +43(0)1 489 3961-0

F. +43(0)1 489 3961-7

[mail@szabo-scandic.com](mailto:mail@szabo-scandic.com)

[www.szabo-scandic.com](http://www.szabo-scandic.com)

[linkedin.com/company/szaboscandic](https://www.linkedin.com/company/szaboscandic) 

# SMC1 Antibody

Rabbit Polyclonal

Antigen Affinity Purified

Protein ID NP\_006297.2

Catalog No. A300-055A-T

GeneID 8243

Lot No. A300-055A-T-6

**APPLICATIONS** WB, IP, IHC

**SPECIES REACTIVITY** Human, Mouse

**PRESUMED REACTIVITY** Based on 100% sequence identity, this antibody is predicted to react with Rat and Bovine

**AMOUNT** 10 µl

**CONCENTRATION** 1000 µg/ml

**STORAGE/SHELF LIFE** 2 – 8°C / 1 year from date of receipt

**PHYSICAL STATE** Liquid

**BUFFER** Tris-citrate/phosphate buffer, pH 7 to 8 containing 0.09% Sodium Azide

**ISOTYPE** IgG

**ORIGIN** USA

**PRODUCTION PROCEDURES** Antibody was affinity purified using an epitope specific to SMC1 immobilized on solid support.

The epitope recognized by A300-055A-T maps to a region between residue 1175 and the C-terminus of human Structural Maintenance of Chromosomes 1 using the numbering given in entry NP\_006297.2 (GeneID 8243).

**APPLICATIONS** Centrifuge tube to remove product from lid. Optimal working dilutions should be determined experimentally by the investigator. Prepare working dilution immediately before use.

Western Blot 1:2,000 – 1:10,000

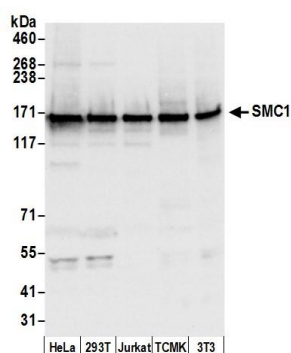
Immunoprecipitation 2 – 10 µg/mg lysate

Immunohistochemistry 1:2,000 – 1:10,000. Epitope retrieval with citrate buffer pH 6.0 is recommended for FFPE tissue sections.

**ADDITIONAL INFO** <https://www.bethyl.com/product/A300-055A-T>

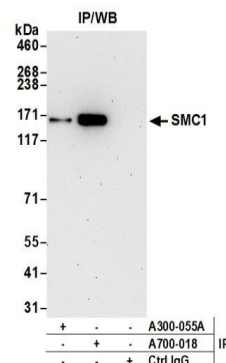
Use the link above to view SDS, a current list of citations, and other product specific information.  
IP-western blot protocol: [https://www.bethyl.com/content/protocol\\_IP\\_WB](https://www.bethyl.com/content/protocol_IP_WB)

This document certifies that this product has met all of the quality control standards defined by Bethyl Laboratories, Inc.  
Michael Spencer, PhD Date: June 6, 2022



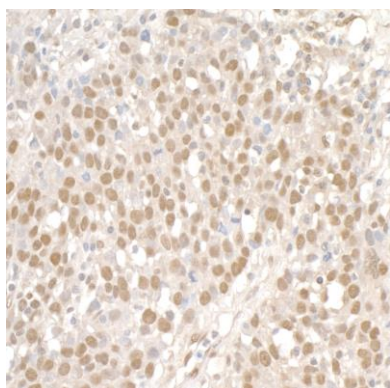
#### Detection of human and mouse SMC1 by western blot.

**Samples:** Whole cell lysate (50 µg) from HeLa, HEK293T, Jurkat, mouse TCMK-1, and mouse NIH 3T3 cells prepared using NETN lysis buffer. **Antibody:** Affinity purified rabbit anti-SMC1 antibody A300-055A (lot A300-055A-6) used for WB at 0.1 µg/ml. **Detection:** Chemiluminescence with an exposure time of 3 seconds.



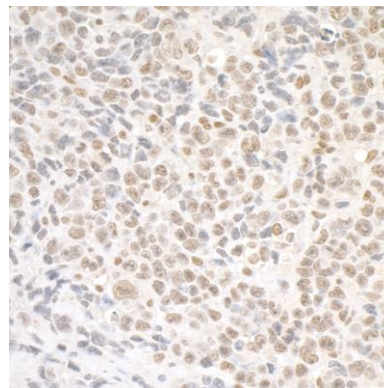
#### Detection of human SMC1 by western blot of immunoprecipitates.

**Samples:** Whole cell lysate (1.0 mg per IP reaction; 20% of IP loaded) from HeLa cells prepared using NETN lysis buffer. **Antibodies:** Affinity purified rabbit anti-SMC1 antibody A300-055A (lot A300-055A-6) used for IP at 6 µg per reaction. SMC1 was also immunoprecipitated by rabbit anti-SMC1 recombinant monoclonal antibody [BL-205-2G8] (A700-018). For blotting immunoprecipitated SMC1, A700-018 was used at 1:1000. **Detection:** Chemiluminescence with an exposure time of 10 seconds.



#### Detection of human SMC1 by immunohistochemistry.

**Sample:** FFPE section of human ovarian carcinoma. **Antibody:** Affinity purified rabbit anti-SMC1 (Cat. No. A300-055A Lot6) used at a dilution of 1:5,000 (0.2µg/ml). **Detection:** DAB



#### Detection of mouse SMC1 by immunohistochemistry.

**Sample:** FFPE section of mouse colon carcinoma CT26. **Antibody:** Affinity purified rabbit anti-SMC1 (Cat. No. A300-055A Lot6) used at a dilution of 1:5,000 (0.2µg/ml). **Detection:** DAB