



# SZABO SCANDIC

Part of Europa Biosite

## Produktinformation



Forschungsprodukte & Biochemikalien



Zellkultur & Verbrauchsmaterial



Diagnostik & molekulare Diagnostik



Laborgeräte & Service

Weitere Information auf den folgenden Seiten!  
See the following pages for more information!



### Lieferung & Zahlungsart

siehe unsere [Liefer- und Versandbedingungen](#)

### Zuschläge

- Mindermengenzuschlag
- Trockeneiszuschlag
- Gefahrgutzuschlag
- Expressversand

### SZABO-SCANDIC Handels GmbH

Quellenstraße 110, A-1100 Wien

T. +43(0)1 489 3961-0

F. +43(0)1 489 3961-7

[mail@szabo-scandic.com](mailto:mail@szabo-scandic.com)

[www.szabo-scandic.com](http://www.szabo-scandic.com)

[linkedin.com/company/szaboscandic](https://www.linkedin.com/company/szaboscandic)



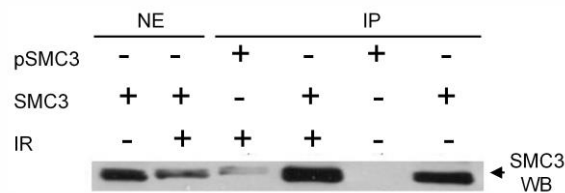
# Phospho SMC3 (S383) Antibody

Rabbit Polyclonal

Antigen Affinity Purified	Protein ID	NP_005436.1
Catalog No. A300-061A-T	GeneID	9126
Lot No. A300-061A-T-1		

APPLICATIONS	IP				
SPECIES REACTIVITY	Human				
PRESUMED REACTIVITY	Based on 100% sequence identity, this antibody is predicted to react with Mouse, Rat, X. laevis, Bovine and Orangutan				
AMOUNT	10 µl				
CONCENTRATION	1000 µg/ml				
STORAGE/SHELF LIFE	2 – 8°C / 1 year from date of receipt				
PHYSICAL STATE	Liquid				
BUFFER	Tris-citrate/phosphate buffer, pH 7 to 8 containing 0.09% Sodium Azide				
ISOTYPE	IgG				
ORIGIN	USA				
PRODUCTION PROCEDURES	<p>Antibody was affinity purified using a phosphorylated epitope corresponding to phosphorylation at Serine 383 immobilized on solid support.</p> <p>Immunogen for A300-061A-T was a phosphorylated synthetic peptide, which represented a portion of human Structural Maintenance of Chromosomes 3 (GeneID 9126) around serine 383 according to the numbering given in entry NP_005436.1.</p> <p>Immunoglobulin concentration was determined by extinction coefficient: absorbance at 280 nm of 1.4 equals 1.0 mg of IgG.</p>				
APPLICATIONS	<p>Centrifuge tube to remove product from lid. Optimal working dilutions should be determined experimentally by the investigator. Prepare working dilution immediately before use.</p> <table><tbody><tr><td>Western Blot</td><td>Not recommended</td></tr><tr><td>Immunoprecipitation</td><td>2 – 6 µg/mg lysate</td></tr></tbody></table>	Western Blot	Not recommended	Immunoprecipitation	2 – 6 µg/mg lysate
Western Blot	Not recommended				
Immunoprecipitation	2 – 6 µg/mg lysate				
ADDITIONAL INFO	<p><a href="https://www.bethyl.com/product/A300-061A-T">https://www.bethyl.com/product/A300-061A-T</a></p> <p>Use the link above to view SDS, a current list of citations, and other product specific information. IP-western blot protocol: <a href="https://www.bethyl.com/content/protocol_IP_WB">https://www.bethyl.com/content/protocol_IP_WB</a></p>				

This document certifies that this product has met all of the quality control standards defined by Bethyl Laboratories, Inc.  
Michael Spencer, PhD Date: June 6, 2022

**immunoprecipitation of human Phospho SMC3 (Ser383).**

*Samples:* Nuclear extracts (50 µg) from HeLa cells that were irradiated with 10 Gy of ionizing radiation or mock irradiated. *Antibodies:* Rabbit anti-SMC3 pSer383 A300-061A was used at 4 µg/mg lysate to IP phospho SMC3 (Ser383). Rabbit anti-SMC3 A300-060A was used at 4 µg/mg lysate for IP and at 0.5 µg/ml for WB. *Detection:* Chemiluminescence.