



# SZABO SCANDIC

Part of Europa Biosite

## Produktinformation



Forschungsprodukte & Biochemikalien



Zellkultur & Verbrauchsmaterial



Diagnostik & molekulare Diagnostik



Laborgeräte & Service

Weitere Information auf den folgenden Seiten!  
See the following pages for more information!



### Lieferung & Zahlungsart

siehe unsere [Liefer- und Versandbedingungen](#)

### Zuschläge

- Mindermengenzuschlag
- Trockeneiszuschlag
- Gefahrgutzuschlag
- Expressversand

### SZABO-SCANDIC HandelsgmbH

Quellenstraße 110, A-1100 Wien

T. +43(0)1 489 3961-0

F. +43(0)1 489 3961-7

[mail@szabo-scandic.com](mailto:mail@szabo-scandic.com)

[www.szabo-scandic.com](http://www.szabo-scandic.com)

[linkedin.com/company/szaboscandic](https://www.linkedin.com/company/szaboscandic) 

# SMC4 Antibody

Rabbit Polyclonal

Antigen Affinity Purified

Protein ID NP\_005487.2

Catalog No. A300-064A

GeneID 10051

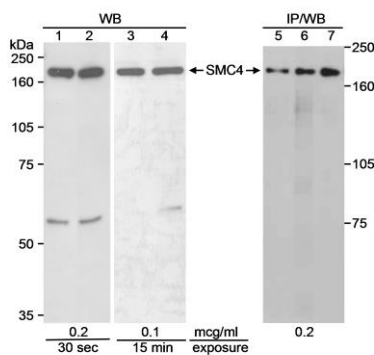
Lot No. A300-064A-2



<b>APPLICATIONS</b>	WB, IP, ICC						
<b>SPECIES REACTIVITY</b>	Human						
<b>AMOUNT</b>	100 µl						
<b>CONCENTRATION</b>	1000 µg/ml						
<b>STORAGE/SHELF LIFE</b>	2 – 8° C / 1 year from date of receipt						
<b>PHYSICAL STATE</b>	Liquid						
<b>BUFFER</b>	Tris-citrate/phosphate buffer, pH 7 to 8 containing 0.09% Sodium Azide						
<b>ISOTYPE</b>	IgG						
<b>ORIGIN</b>	USA						
<b>PRODUCTION PROCEDURES</b>	<p>Antibody was affinity purified using an epitope specific to SMC4 immobilized on solid support.</p> <p>The epitope recognized by A300-064A maps to a region between residue 1225 and the C-terminus (residue 1288) of human Structural Maintenance of Chromosomes 4 using the numbering given in entry NP_005487.2 (GeneID 10051).</p> <p>Immunoglobulin concentration was determined by extinction coefficient: absorbance at 280 nm of 1.4 equals 1.0 mg of IgG.</p>						
<b>APPLICATIONS</b>	<p>Centrifuge tube to remove product from lid. Optimal working dilutions should be determined experimentally by the investigator. Prepare working dilution immediately before use.</p> <table><tr><td>Western Blot</td><td>1:1,000 – 1:10,000</td></tr><tr><td>Immunoprecipitation</td><td>2 – 10 µg/mg lysate</td></tr><tr><td>Immunocytochemistry</td><td>1:200 – 1:400</td></tr></table>	Western Blot	1:1,000 – 1:10,000	Immunoprecipitation	2 – 10 µg/mg lysate	Immunocytochemistry	1:200 – 1:400
Western Blot	1:1,000 – 1:10,000						
Immunoprecipitation	2 – 10 µg/mg lysate						
Immunocytochemistry	1:200 – 1:400						
<b>APPLICATION NOTES</b>	<p>Western blot of immunoprecipitates performed using Normal Pig Serum (Cat. No. S100-020), Goat anti-Rabbit Light Chain HRP Conjugate (Cat. No. A120-113P) and 4-8% SDS-PAGE (link to IP-western blot protocol in Additional Info section below).</p> <p>Western blot of lysates performed using standard western blot reagents and 4-8% SDS-PAGE.</p>						
<b>ADDITIONAL INFO</b>	<p><a href="https://www.bethyl.com/product/A300-064A">https://www.bethyl.com/product/A300-064A</a></p> <p>Use the link above to view SDS, a current list of citations, and other product specific information.</p> <p>IP-western blot protocol: <a href="https://www.bethyl.com/content/protocol_IP_WB">https://www.bethyl.com/content/protocol_IP_WB</a></p>						

This document certifies that this product has met all of the quality control standards defined by Bethyl Laboratories, Inc.  
Eric McIntush, PhD | Chief Scientific Officer

Date: June 21, 2019



**Detection of human SMC4 by western blot and immunoprecipitation.** *Samples:* Whole cell lysate (90  $\mu$ g for WB; 0.5 mg for IP/WB) from HEK293T cells (lanes 1, 3 and 5), normal human lymphoblasts (lane 2) or SMC4 transfected 239T cells (lanes 4, 6 and 7) separated on an 8% SDS-PAGE gel. *Antibodies:* Affinity purified rabbit anti-SMC4 A300-064A used at 0.2 or 0.1  $\mu$ g/ml for WB and 5  $\mu$ g for IP. *Detection:* Chemiluminescence with the indicated exposure times.