



# SZABO SCANDIC

Part of Europa Biosite

## Produktinformation



Forschungsprodukte & Biochemikalien



Zellkultur & Verbrauchsmaterial



Diagnostik & molekulare Diagnostik



Laborgeräte & Service

Weitere Information auf den folgenden Seiten!  
See the following pages for more information!



### Lieferung & Zahlungsart

siehe unsere [Liefer- und Versandbedingungen](#)

### Zuschläge

- Mindermengenzuschlag
- Trockeneiszuschlag
- Gefahrgutzuschlag
- Expressversand

### SZABO-SCANDIC HandelsgmbH

Quellenstraße 110, A-1100 Wien

T. +43(0)1 489 3961-0

F. +43(0)1 489 3961-7

[mail@szabo-scandic.com](mailto:mail@szabo-scandic.com)

[www.szabo-scandic.com](http://www.szabo-scandic.com)

[linkedin.com/company/szaboscandic](https://www.linkedin.com/company/szaboscandic)



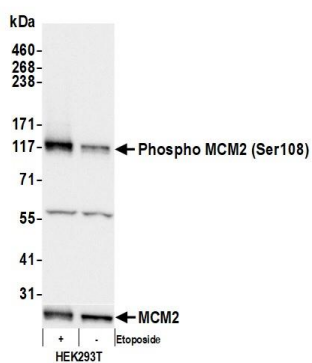
# Phospho MCM2 (S108) Antibody

Rabbit Polyclonal

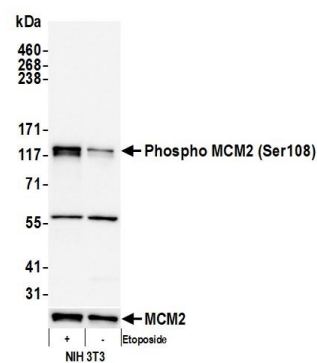
Antigen Affinity Purified	RefSeq ID	NP_004517.2
Catalog No. A300-094A-T	Uniprot ID	P49736
Lot No. 5	GenelD	4171

<b>APPLICATIONS</b>	WB, IP, IHC						
<b>SPECIES REACTIVITY</b>	Human, Mouse						
<b>AMOUNT</b>	10 µl						
<b>CONCENTRATION</b>	1000 µg/ml						
<b>STORAGE/SHELF LIFE</b>	2 – 8°C / 1 year from date of receipt						
<b>PHYSICAL STATE</b>	Liquid						
<b>BUFFER</b>	Tris-citrate/phosphate buffer, pH 7 to 8 containing 0.09% Sodium Azide						
<b>ISOTYPE</b>	IgG						
<b>ORIGIN</b>	USA						
<b>PRODUCTION PROCEDURES</b>	<p>Antibody was affinity purified using a synthetic peptide representing phosphorylation at Serine 108 and surrounding residues of MCM2 immobilized on solid support.</p> <p>Immunogen for A300-094A-T was a synthetic phosphorylated peptide, which represented a portion of human Minichromosomal Maintenance Deficient 2 surrounding Serine 108 according to the numbering given in entry NP_004517.2 (GenelD 4171).</p>						
<b>APPLICATIONS</b>	<p>Centrifuge tube to remove product from lid. Optimal working dilutions should be determined experimentally by the investigator. Prepare working dilution immediately before use.</p> <table><tr><td>Western Blot</td><td>1:5,000 – 1:10,000</td></tr><tr><td>Immunoprecipitation</td><td>2 – 10 µg/mg lysate</td></tr><tr><td>Immunohistochemistry</td><td>1:100 to 1:500. Epitope retrieval with citrate buffer pH6.0 is recommended for FFPE tissue sections.</td></tr></table>	Western Blot	1:5,000 – 1:10,000	Immunoprecipitation	2 – 10 µg/mg lysate	Immunohistochemistry	1:100 to 1:500. Epitope retrieval with citrate buffer pH6.0 is recommended for FFPE tissue sections.
Western Blot	1:5,000 – 1:10,000						
Immunoprecipitation	2 – 10 µg/mg lysate						
Immunohistochemistry	1:100 to 1:500. Epitope retrieval with citrate buffer pH6.0 is recommended for FFPE tissue sections.						
<b>IHC HUMAN CONTROLS</b>	Breast Carcinoma, Colon Carcinoma, Glioblastoma, Non-Small Cell Lung Cancer, Ovarian Carcinoma, Prostate Carcinoma, Skin Squamous Cell Carcinoma, Testicular Seminoma						
<b>IHC MOUSE CONTROLS</b>	Renal Cell Carcinoma, Teratoma, CT26 cells						
<b>ADDITIONAL INFO</b>	<p><a href="https://www.fortislife.com/p/A300-094A-T">https://www.fortislife.com/p/A300-094A-T</a></p> <p>Use the link above to view SDS, a current list of citations, and other product specific information.</p>						

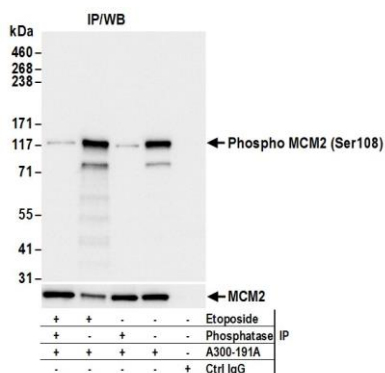
This document certifies that this product has met all of the quality control standards defined by Bethyl Laboratories, Inc.  
Michael Spencer, PhD Date: June 15, 2023



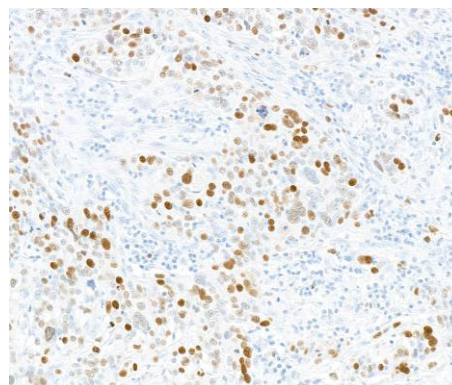
**Detection of human Phospho MCM2 (Ser108) by western blot.** *Samples:* Whole cell lysate (10 µg) from HEK293T cells treated with 100 µM etoposide (+) or mock treated (-). *Antibody:* Affinity purified rabbit anti-Phospho MCM2 (Ser108) antibody (A300-094A lot 5) used for WB at 0.1 µg/ml. *Detection:* Chemiluminescence with an exposure time of 1 second. Lower Panel: Rabbit anti-MCM2 antibody (A300-191A).



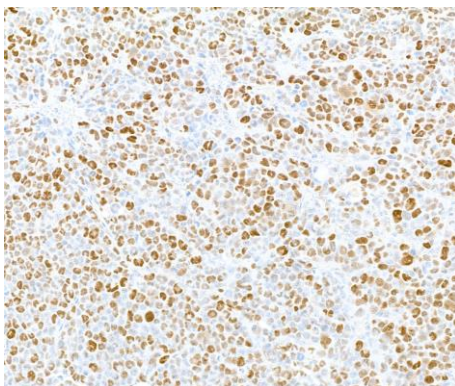
**Detection of mouse Phospho MCM2 (Ser108) by western blot.** *Samples:* Whole cell lysate (10 µg) from NIH 3T3 cells prepared using NETN lysis buffer. *Antibody:* Affinity purified rabbit anti-Phospho MCM2 (Ser108) antibody (A300-094A lot 5) used for WB at 1 µg/ml. *Detection:* Chemiluminescence with an exposure time of 3 seconds. Lower Panel: Rabbit anti-MCM2 antibody (A300-191A).



**Detection of human Phospho MCM2 (Ser108) by western blot of immunoprecipitates.** *Samples:* Whole cell lysate (1.0 mg per IP reaction; 20% of IP loaded) from HEK293T cells treated with etoposide (+) or mock treated (-). *Antibodies:* Affinity purified rabbit anti-MCM2 antibody (A300-191A) used for IP at 6 µg per reaction. Following immunoprecipitation, the IP reaction was treated with phosphatases (+) or mock treated (-). For blotting immunoprecipitated Phospho MCM2 (Ser108), A300-094A lot 5 was used at 0.1 µg/ml. *Detection:* Chemiluminescence with an exposure time of 1 second. Lower Panel: Rabbit anti-MCM2 antibody (A300-191A).



**Detection of human Phospho MCM2 (S108) by immunohistochemistry.** *Sample:* FFPE sections of human breast carcinoma. *Antibody:* Affinity purified rabbit anti-phospho MCM2 (S108) (Cat. No. A300-094A Lot5) used at a dilution of 1:5,000 (0.2µg/ml). *Detection:* DAB



**Detection of mouse Phospho MCM2 (S108) by immunohistochemistry.** *Sample:* FFPE sections of mouse plasmacytoma. *Antibody:* Affinity purified rabbit anti-phospho MCM2 (S108) (Cat. No. A300-094A Lot5) used at a dilution of 1:5,000 (0.2µg/ml). *Detection:* DAB