



# SZABO SCANDIC

Part of Europa Biosite

## Produktinformation



Forschungsprodukte & Biochemikalien



Zellkultur & Verbrauchsmaterial



Diagnostik & molekulare Diagnostik



Laborgeräte & Service

Weitere Information auf den folgenden Seiten!  
See the following pages for more information!



### Lieferung & Zahlungsart

siehe unsere [Liefer- und Versandbedingungen](#)

### Zuschläge

- Mindermengenzuschlag
- Trockeneiszuschlag
- Gefahrgutzuschlag
- Expressversand

### SZABO-SCANDIC HandelsgmbH

Quellenstraße 110, A-1100 Wien

T. +43(0)1 489 3961-0

F. +43(0)1 489 3961-7

[mail@szabo-scandic.com](mailto:mail@szabo-scandic.com)

[www.szabo-scandic.com](http://www.szabo-scandic.com)

[linkedin.com/company/szaboscandic](https://www.linkedin.com/company/szaboscandic) 

# PARC/H7-AP1 Antibody

Rabbit Polyclonal

Antigen Affinity Purified

Protein ID Q8IWT3

Catalog No. A300-097A-T

GeneID 23113

Lot No. A300-097A-T-3

|                              |   |
|------------------------------|---|
| <b>APPLICATIONS</b>          | WB, IP  |
| <b>SPECIES REACTIVITY</b>    | Human   |
| <b>AMOUNT</b>                | 10 µl   |
| <b>CONCENTRATION</b>         | 1000 µg/ml  |
| <b>STORAGE/SHELF LIFE</b>    | 2 – 8°C / 1 year from date of receipt   |
| <b>PHYSICAL STATE</b>        | Liquid  |
| <b>BUFFER</b>                | Tris-citrate/phosphate buffer, pH 7 to 8 containing 0.09% Sodium Azide                                |
| <b>ISOTYPE</b>               | IgG   |
| <b>ORIGIN</b>                | USA   |
| <b>PRODUCTION PROCEDURES</b> | Antibody was affinity purified using an epitope specific to PARC/H7-AP1 immobilized on solid support. |

The epitope recognized by A300-097A-T maps to a region between residues 900 and 950 of human P53-associated parkin-like cytoplasmic protein using the numbering given in TrEMBL entry Q8IWT3 (GeneID 23113).

Immunoglobulin concentration was determined by extinction coefficient: absorbance at 280 nm of 1.4 equals 1.0 mg of IgG.

**APPLICATIONS** Centrifuge tube to remove product from lid. Optimal working dilutions should be determined experimentally by the investigator. Prepare working dilution immediately before use.

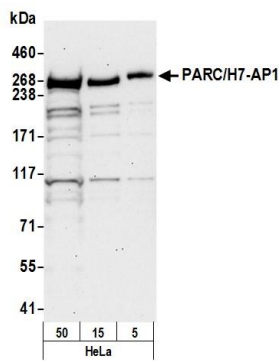
Western Blot 1:2,000 – 1:10,000

Immunoprecipitation 2 – 10 µg/mg lysate

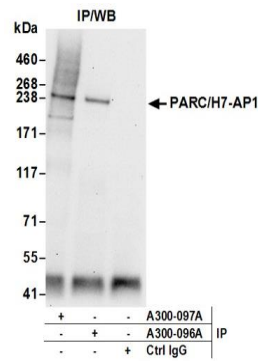
**ADDITIONAL INFO** <https://www.bethyl.com/product/A300-097A-T>

Use the link above to view SDS, a current list of citations, and other product specific information.  
IP-western blot protocol: [https://www.bethyl.com/content/protocol\\_IP\\_WB](https://www.bethyl.com/content/protocol_IP_WB)

This document certifies that this product has met all of the quality control standards defined by Bethyl Laboratories, Inc.  
Michael Spencer, PhD Date: June 6, 2022



**Detection of human PARC/H7-AP1 by western blot.**  
*Samples:* Whole cell lysate (5, 15 and 50 µg) from HeLa cells prepared using NETN lysis buffer. *Antibody:* Affinity purified rabbit anti-PARC/H7-AP1 antibody A300-097A (lot A300-097A-3) used for WB at 0.1 µg/ml. *Detection:* Chemiluminescence with an exposure time of 30 seconds.



**Detection of human PARC/H7-AP1 by western blot of immunoprecipitates.** *Samples:* Whole cell lysate (0.5 or 1.0 mg per IP reaction; 20% of IP loaded) from HeLa cells prepared using NETN lysis buffer. *Antibodies:* Affinity purified rabbit anti-PARC/H7-AP1 antibody A300-097A (lot A300-097A-3) used for IP at 6 µg per reaction. PARC/H7-AP1 was also immunoprecipitated by rabbit anti-PARC/H7-AP1 antibody A300-096A. For blotting immunoprecipitated PARC/H7-AP1, A300-097A was used at 0.4 µg/ml. *Detection:* Chemiluminescence with an exposure time of 30 seconds.