



# SZABO SCANDIC

Part of Europa Biosite

## Produktinformation



Forschungsprodukte & Biochemikalien



Zellkultur & Verbrauchsmaterial



Diagnostik & molekulare Diagnostik



Laborgeräte & Service

Weitere Information auf den folgenden Seiten!  
See the following pages for more information!



### Lieferung & Zahlungsart

siehe unsere [Liefer- und Versandbedingungen](#)

### Zuschläge

- Mindermengenzuschlag
- Trockeneiszuschlag
- Gefahrgutzuschlag
- Expressversand

### SZABO-SCANDIC HandelsgmbH

Quellenstraße 110, A-1100 Wien

T. +43(0)1 489 3961-0

F. +43(0)1 489 3961-7

[mail@szabo-scandic.com](mailto:mail@szabo-scandic.com)

[www.szabo-scandic.com](http://www.szabo-scandic.com)

[linkedin.com/company/szaboscandic](https://www.linkedin.com/company/szaboscandic) 

# PARC/H7-AP1 Antibody

Rabbit Polyclonal

Antigen Affinity Purified

Protein ID Q8IWT3

Catalog No. A300-098A-T

GeneID 23113

Lot No. A300-098A-T-1

**APPLICATIONS** WB, IP

**SPECIES REACTIVITY** Human

**AMOUNT** 10 µl

**CONCENTRATION** 1000 µg/ml

**STORAGE/SHELF LIFE** 2 – 8°C / 1 year from date of receipt

**PHYSICAL STATE** Liquid

**BUFFER** Tris-citrate/phosphate buffer, pH 7 to 8 containing 0.09% Sodium Azide

**ISOTYPE** IgG

**ORIGIN** USA

**PRODUCTION PROCEDURES** Antibody was affinity purified using an epitope specific to PARC/H7-AP1 immobilized on solid support.

The epitope recognized by A300-098A-T maps to a region between residue 2475 and the C-terminus (residue 2527) of human P53-associated parkin-like cytoplasmic protein using the numbering given in TrEMBL entry Q8IWT3 (GeneID 23113).

Immunoglobulin concentration was determined by extinction coefficient: absorbance at 280 nm of 1.4 equals 1.0 mg of IgG.

**APPLICATIONS** Centrifuge tube to remove product from lid. Optimal working dilutions should be determined experimentally by the investigator. Prepare working dilution immediately before use.

Western Blot 1:20,000 – 1:30,000

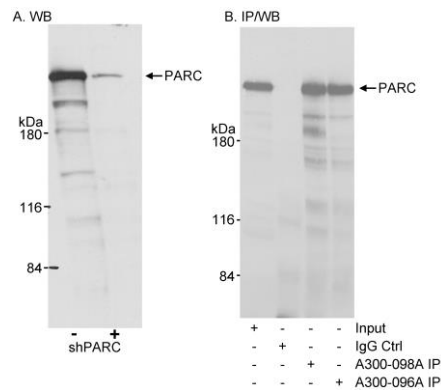
Immunoprecipitation 2 – 5 µg/mg lysate

**ADDITIONAL INFO** <https://www.bethyl.com/product/A300-098A-T>

Use the link above to view SDS, a current list of citations, and other product specific information.

IP-western blot protocol: [https://www.bethyl.com/content/protocol\\_IP\\_WB](https://www.bethyl.com/content/protocol_IP_WB)

This document certifies that this product has met all of the quality control standards defined by Bethyl Laboratories, Inc.  
Michael Spencer, PhD Date: June 6, 2022



**Detection of human PARC by western blot and immunoprecipitation.** *Samples:* A) Whole cell lysate (100 µg) from untreated U2OS cells or U2OS derived cells that stably express a short hairpin RNA (shPARC) against PARC. B) Whole cell lysate (200 µg for input; 1 mg for IP) from BJAB cells. *Antibodies:* Affinity purified rabbit anti-PARC antibody A300-098A used at 0.04 µg/ml for WB (A & B) and at 2 µg/mg lysate for IP. PARC was also immunoprecipitated using A300-096A at 2 µg/mg lysate. *Detection:* Chemiluminescence with an exposure time of less than 5 minutes.