



# SZABO SCANDIC

Part of Europa Biosite

## Produktinformation



Forschungsprodukte & Biochemikalien



Zellkultur & Verbrauchsmaterial



Diagnostik & molekulare Diagnostik



Laborgeräte & Service

Weitere Information auf den folgenden Seiten!  
See the following pages for more information!



### Lieferung & Zahlungsart

siehe unsere [Liefer- und Versandbedingungen](#)

### Zuschläge

- Mindermengenzuschlag
- Trockeneiszuschlag
- Gefahrgutzuschlag
- Expressversand

### SZABO-SCANDIC HandelsgmbH

Quellenstraße 110, A-1100 Wien

T. +43(0)1 489 3961-0

F. +43(0)1 489 3961-7

[mail@szabo-scandic.com](mailto:mail@szabo-scandic.com)

[www.szabo-scandic.com](http://www.szabo-scandic.com)

[linkedin.com/company/szaboscandic](https://www.linkedin.com/company/szaboscandic) 

# BLM Antibody

Rabbit Polyclonal

Antigen Affinity Purified

Protein ID NP\_000048.1

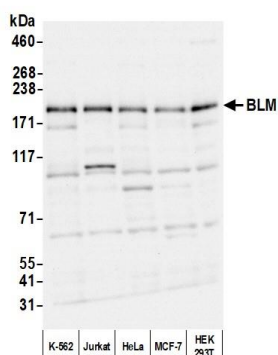
Catalog No. A300-110A-T

GeneID 641

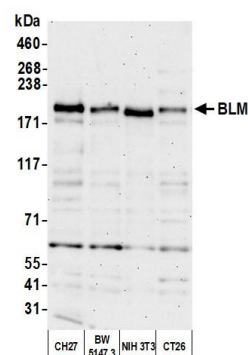
Lot No. A300-110A-T-5

<b>APPLICATIONS</b>	WB, IP
<b>SPECIES REACTIVITY</b>	Human, Mouse
<b>AMOUNT</b>	10 µl
<b>CONCENTRATION</b>	1000 µg/ml
<b>STORAGE/SHELF LIFE</b>	2 – 8°C / 1 year from date of receipt
<b>PHYSICAL STATE</b>	Liquid
<b>BUFFER</b>	Tris-citrate/phosphate buffer, pH 7 to 8 containing 0.09% Sodium Azide
<b>ISOTYPE</b>	IgG
<b>ORIGIN</b>	USA
<b>PRODUCTION PROCEDURES</b>	Antibody was affinity purified using an epitope specific to BLM immobilized on solid support.  The epitope recognized by A300-110A-T maps to a region between residue 1375 and the C-terminus (residue 1417) of human Bloom Syndrome using the numbering given in entry NP_000048.1 (GeneID 641).
<b>APPLICATIONS</b>	Centrifuge tube to remove product from lid. Optimal working dilutions should be determined experimentally by the investigator. Prepare working dilution immediately before use.  Western Blot 1:2,000 – 1:10,000  Immunoprecipitation 2 – 10 µg/mg lysate
<b>ADDITIONAL INFO</b>	<a href="https://www.fortislifesciences.com/p/A300-110A-T">https://www.fortislifesciences.com/p/A300-110A-T</a> Use the link above to view SDS, a current list of citations, and other product specific information.

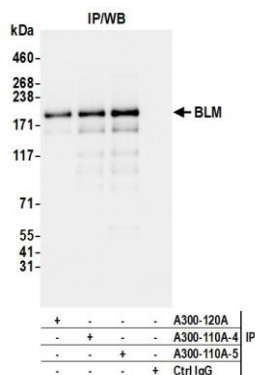
This document certifies that this product has met all of the quality control standards defined by Bethyl Laboratories, Inc.  
Michael Spencer, PhD Date: July 1, 2022



**Detection of human BLM by western blot.** *Samples:* Whole cell lysate (15 µg) from K-562, Jurkat, HeLa, MCF-7, and HEK293T cells prepared using NETN lysis buffer. *Antibody:* Affinity purified rabbit anti-BLM antibody (A300-110A lot 5) used for WB at 0.1 µg/ml. *Detection:* Chemiluminescence with an exposure time of 10 seconds.



**Detection of mouse BLM by western blot.** *Samples:* Whole cell lysate (10 µg) from CH27, BW5147.3, NIH 3T3, and CT26 cells prepared using NETN lysis buffer. *Antibody:* Affinity purified rabbit anti-BLM antibody (A300-110A lot 5) used for WB at 0.1 µg/ml. *Detection:* Chemiluminescence with an exposure time of 75 seconds.



**Detection of human BLM by western blot of immunoprecipitates.** *Samples:* Whole cell lysate (1.0 mg per IP reaction; 20% of IP loaded) from HEK293T cells prepared using NETN lysis buffer. *Antibodies:* Affinity purified rabbit anti-BLM antibody (A300-110A lot 5) used for IP at 6 µg per reaction. BLM was also immunoprecipitated by a previous lot of this antibody (A300-110A lot 4) and a second antibody against a different epitope of BLM (A300-120A). For blotting immunoprecipitated BLM, A300-110A was used at 0.04 µg/ml. *Detection:* Chemiluminescence with an exposure time of 3 seconds.