



# SZABO SCANDIC

Part of Europa Biosite

## Produktinformation



Forschungsprodukte & Biochemikalien



Zellkultur & Verbrauchsmaterial



Diagnostik & molekulare Diagnostik



Laborgeräte & Service

Weitere Information auf den folgenden Seiten!  
See the following pages for more information!



### Lieferung & Zahlungsart

siehe unsere [Liefer- und Versandbedingungen](#)

### Zuschläge

- Mindermengenzuschlag
- Trockeneiszuschlag
- Gefahrgutzuschlag
- Expressversand

### SZABO-SCANDIC HandelsgmbH

Quellenstraße 110, A-1100 Wien

T. +43(0)1 489 3961-0

F. +43(0)1 489 3961-7

[mail@szabo-scandic.com](mailto:mail@szabo-scandic.com)

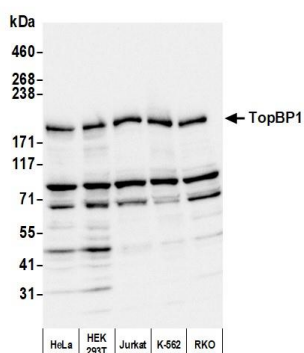
[www.szabo-scandic.com](http://www.szabo-scandic.com)

[linkedin.com/company/szaboscandic](https://www.linkedin.com/company/szaboscandic) 

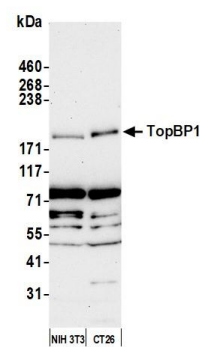
**BETHYL** | **FORTIS**  
LABORATORIES, INC. | LIFE SCIENCES

GenelD 11073

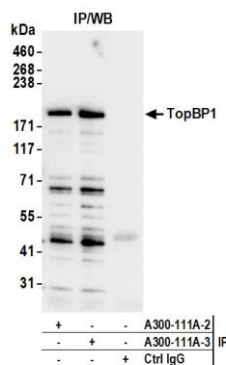
This document certifies that this product has met all of the quality control standards defined by Bethyl Laboratories, Inc.  
Michael Spencer, PhD Date: August 30, 2023



**Detection of human TopBP1 by western blot.** *Samples:* Whole cell lysate (50 µg) from HeLa, HEK293T, Jurkat, K-562, and RKO cells prepared using NETN lysis buffer. *Antibody:* Affinity purified rabbit anti-TopBP1 antibody (A300-111A lot 3) used for WB at 0.1 µg/ml. *Detection:* Chemiluminescence with an exposure time of 3 seconds.



**Detection of mouse TopBP1 by western blot.** *Samples:* Whole cell lysate (25 µg) from NIH 3T3 and CT26 cells prepared using NETN lysis buffer. *Antibody:* Affinity purified rabbit anti-TopBP1 antibody (A300-111A lot 3) used for WB at 0.04 µg/ml. *Detection:* Chemiluminescence with an exposure time of 3 minutes.



**Detection of human TopBP1 by western blot of immunoprecipitates.** *Samples:* Whole cell lysate (1 mg per IP; 5% of IP loaded) from HEK293T cells prepared using NETN lysis buffer. *Antibodies:* Affinity purified rabbit anti-TopBP1 antibody (A300-111A lot 3) used for IP at 6 µg per reaction. TopBP1 was also immunoprecipitated by a previous lot of this antibody (A300-111A lot 2). For blotting immunoprecipitated TopBP1, A300-111A was used at 0.04 µg/ml. *Detection:* Chemiluminescence with an exposure time of 10 seconds.