



SZABO SCANDIC

Part of Europa Biosite

Produktinformation



Forschungsprodukte & Biochemikalien



Zellkultur & Verbrauchsmaterial



Diagnostik & molekulare Diagnostik



Laborgeräte & Service

Weitere Information auf den folgenden Seiten!
See the following pages for more information!



Lieferung & Zahlungsart

siehe unsere [Liefer- und Versandbedingungen](#)

Zuschläge

- Mindermengenzuschlag
- Trockeneiszuschlag
- Gefahrgutzuschlag
- Expressversand

SZABO-SCANDIC HandelsgmbH

Quellenstraße 110, A-1100 Wien

T. +43(0)1 489 3961-0

F. +43(0)1 489 3961-7

mail@szabo-scandic.com

www.szabo-scandic.com

[linkedin.com/company/szaboscandic](https://www.linkedin.com/company/szaboscandic) 

TopBP1 Antibody

Rabbit Polyclonal

Antigen Affinity Purified	RefSeq ID	NP_008958.1
Catalog No. A300-111A	Uniprot ID	Q92547
Lot No. 3	GeneID	11073

APPLICATIONS	WB, IP
SPECIES REACTIVITY	Human, Mouse
AMOUNT	100 µl
CONCENTRATION	1000 µg/ml
STORAGE/SHELF LIFE	2 – 8°C / 1 year from date of receipt
PHYSICAL STATE	Liquid
BUFFER	Tris-citrate/phosphate buffer, pH 7 to 8 containing 0.09% Sodium Azide
ISOTYPE	IgG
ORIGIN	USA
PRODUCTION PROCEDURES	Antibody was affinity purified using an epitope specific to TopBP1 immobilized on solid support.

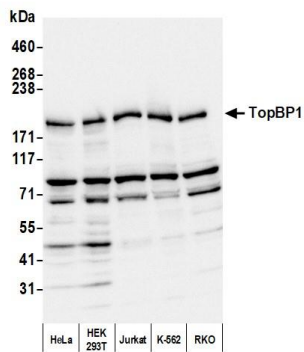
The epitope recognized by A300-111A maps to a region between residue 1400 and the C-terminus (residue 1435) of human Topoisomerase (DNA) II Binding Protein 1 using the numbering given in entry NP_008958.1 (GeneID 11073).

Immunoglobulin concentration was determined by extinction coefficient: absorbance at 280 nm of 1.4 equals 1.0 mg of IgG.

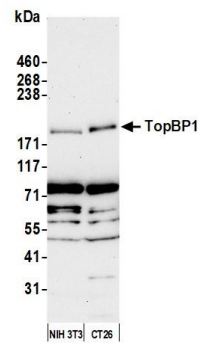
APPLICATIONS	Centrifuge tube to remove product from lid. Optimal working dilutions should be determined experimentally by the investigator. Prepare working dilution immediately before use.
	Western Blot 1:2,000 – 1:10,000
	Immunoprecipitation 2 – 10 µg/mg lysate

ADDITIONAL INFO	https://www.fortislifesciences.com/p/A300-111A Use the link above to view SDS, a current list of citations, and other product specific information.
------------------------	---

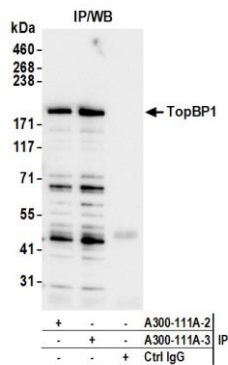
This document certifies that this product has met all of the quality control standards defined by Bethyl Laboratories, Inc. Michael Spencer, PhD	Date: August 30, 2023
---	-----------------------



Detection of human TopBP1 by western blot. *Samples:* Whole cell lysate (50 µg) from HeLa, HEK293T, Jurkat, K-562, and RKO cells prepared using NETN lysis buffer. *Antibody:* Affinity purified rabbit anti-TopBP1 antibody (A300-111A lot 3) used for WB at 0.1 µg/ml. *Detection:* Chemiluminescence with an exposure time of 3 seconds.



Detection of mouse TopBP1 by western blot. *Samples:* Whole cell lysate (25 µg) from NIH 3T3 and CT26 cells prepared using NETN lysis buffer. *Antibody:* Affinity purified rabbit anti-TopBP1 antibody (A300-111A lot 3) used for WB at 0.04 µg/ml. *Detection:* Chemiluminescence with an exposure time of 3 minutes.



Detection of human TopBP1 by western blot of immunoprecipitates. *Samples:* Whole cell lysate (1 mg per IP; 5% of IP loaded) from HEK293T cells prepared using NETN lysis buffer. *Antibodies:* Affinity purified rabbit anti-TopBP1 antibody (A300-111A lot 3) used for IP at 6 µg per reaction. TopBP1 was also immunoprecipitated by a previous lot of this antibody (A300-111A lot 2). For blotting immunoprecipitated TopBP1, A300-111A was used at 0.04 µg/ml. *Detection:* Chemiluminescence with an exposure time of 10 seconds.