



# SZABO SCANDIC

Part of Europa Biosite

## Produktinformation



Forschungsprodukte & Biochemikalien



Zellkultur & Verbrauchsmaterial



Diagnostik & molekulare Diagnostik



Laborgeräte & Service

Weitere Information auf den folgenden Seiten!  
See the following pages for more information!



### Lieferung & Zahlungsart

siehe unsere [Liefer- und Versandbedingungen](#)

### Zuschläge

- Mindermengenzuschlag
- Trockeneiszuschlag
- Gefahrgutzuschlag
- Expressversand

### SZABO-SCANDIC HandelsgmbH

Quellenstraße 110, A-1100 Wien

T. +43(0)1 489 3961-0

F. +43(0)1 489 3961-7

[mail@szabo-scandic.com](mailto:mail@szabo-scandic.com)

[www.szabo-scandic.com](http://www.szabo-scandic.com)

[linkedin.com/company/szaboscandic](https://www.linkedin.com/company/szaboscandic)



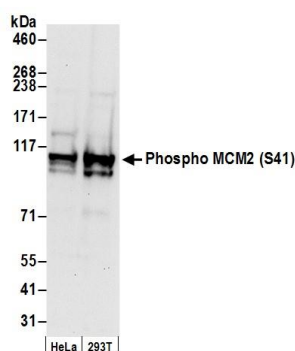
# Phospho MCM2 (S41) Antibody

Rabbit Polyclonal

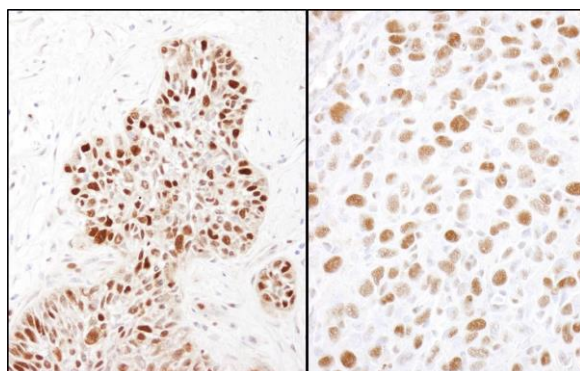
Antigen Affinity Purified	Protein ID	NP_004517.2
Catalog No. A300-117A-T	GeneID	4171
Lot No. A300-117A-T-1		

APPLICATIONS	WB, IHC				
SPECIES REACTIVITY	Human, Mouse				
PRESUMED REACTIVITY	Based on 100% sequence identity, this antibody is predicted to react with X. laevis and X. tropicalis				
AMOUNT	10 µl				
CONCENTRATION	1000 µg/ml				
STORAGE/SHELF LIFE	2 – 8°C / 1 year from date of receipt				
PHYSICAL STATE	Liquid				
BUFFER	Tris-citrate/phosphate buffer, pH 7 to 8 containing 0.09% Sodium Azide				
ISOTYPE	IgG				
ORIGIN	USA				
PRODUCTION PROCEDURES	<p>Antibody was affinity purified using a synthetic peptide representing phosphorylation at Serine 41 and surrounding residues of MCM2 immobilized on solid support.</p> <p>Immunogen for A300-117A-T was a synthetic phosphorylated peptide, which represented a portion of human Minichromosomal Maintenance Deficient 2 surrounding Serine 41 according to the numbering given in entry NP_004517.2 (GeneID 4171).</p> <p>Immunoglobulin concentration was determined by extinction coefficient: absorbance at 280 nm of 1.4 equals 1.0 mg of IgG.</p>				
APPLICATIONS	<p>Centrifuge tube to remove product from lid. Optimal working dilutions should be determined experimentally by the investigator. Prepare working dilution immediately before use.</p> <table><tbody><tr><td>Western Blot</td><td>1:5,000 – 1:20,000</td></tr><tr><td>Immunohistochemistry</td><td>1:1,000 – 1:5,000. Epitope retrieval with citrate buffer pH 6.0 is recommended for FFPE tissue sections.</td></tr></tbody></table>	Western Blot	1:5,000 – 1:20,000	Immunohistochemistry	1:1,000 – 1:5,000. Epitope retrieval with citrate buffer pH 6.0 is recommended for FFPE tissue sections.
Western Blot	1:5,000 – 1:20,000				
Immunohistochemistry	1:1,000 – 1:5,000. Epitope retrieval with citrate buffer pH 6.0 is recommended for FFPE tissue sections.				
ADDITIONAL INFO	<p><a href="https://www.bethyl.com/product/A300-117A-T">https://www.bethyl.com/product/A300-117A-T</a></p> <p>Use the link above to view SDS, a current list of citations, and other product specific information.</p>				

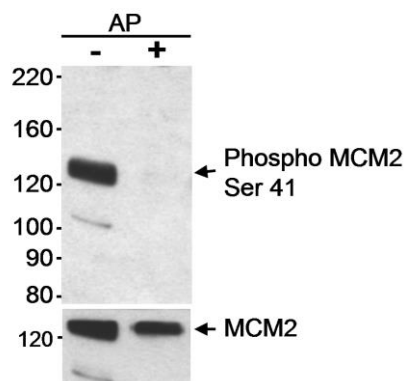
This document certifies that this product has met all of the quality control standards defined by Bethyl Laboratories, Inc.  
Michael Spencer, PhD Date: June 6, 2022



**Detection of human Phospho MCM2 (S41) by western blot.** *Samples:* Whole cell lysate (50 µg) from HeLa and HEK293T cells prepared using NETN lysis buffer. *Antibody:* Affinity purified rabbit anti-Phospho MCM2 (S41) antibody A300-117A (lot A300-117A-1) used for WB at 0.1 µg/ml. *Detection:* Chemiluminescence with an exposure time of 10 seconds.



**Detection of human and mouse MCM2 (Ser41) by immunohistochemistry.** *Sample:* FFPE section of human laryngeal squamous cell carcinoma (left) and mouse squamous cell carcinoma (right). *Antibody:* Affinity purified rabbit anti-MCM2 (Ser41) (Cat. No. A300-117A Lot1) used at a dilution of 1:1,000 (1 µg/ml). *Detection:* DAB



**Detection of human Phospho MCM2 (Ser41) by western blot.** *Samples:* Whole cell lysate (30 µg) from HeLa cells that were either untreated or treated with alkaline phosphatase (AP). *Antibodies:* Affinity purified rabbit anti-phospho MCM2 (Ser41) antibody A300-117A used at 0.1 µg/ml. After probing with the phospho-specific antibodies, rabbit anti-MCM2 antibody A300-191A was used at 0.2 µg/ml to show total MCM2. *Detection:* Chemiluminescence with a 1 minute exposure.