



# SZABO SCANDIC

Part of Europa Biosite

## Produktinformation



Forschungsprodukte & Biochemikalien



Zellkultur & Verbrauchsmaterial



Diagnostik & molekulare Diagnostik



Laborgeräte & Service

Weitere Information auf den folgenden Seiten!  
See the following pages for more information!



### Lieferung & Zahlungsart

siehe unsere [Liefer- und Versandbedingungen](#)

### Zuschläge

- Mindermengenzuschlag
- Trockeneiszuschlag
- Gefahrgutzuschlag
- Expressversand

### SZABO-SCANDIC HandelsgmbH

Quellenstraße 110, A-1100 Wien

T. +43(0)1 489 3961-0

F. +43(0)1 489 3961-7

[mail@szabo-scandic.com](mailto:mail@szabo-scandic.com)

[www.szabo-scandic.com](http://www.szabo-scandic.com)

[linkedin.com/company/szaboscandic](https://www.linkedin.com/company/szaboscandic) 

# Phospho MCM2 (S41) Antibody

Rabbit Polyclonal

Antigen Affinity Purified

Protein ID NP\_004517.2

Catalog No. A300-117A

GeneID 4171

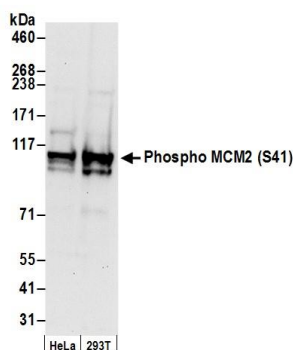
Lot No. A300-117A-1



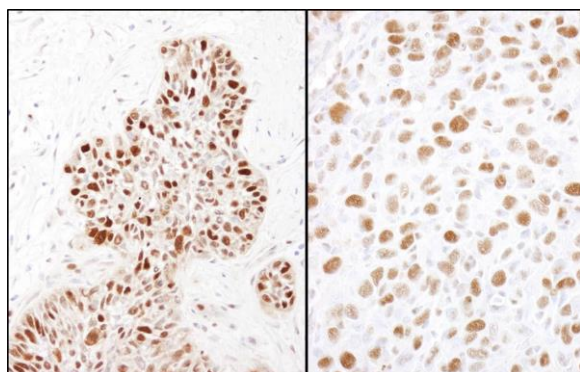
<b>APPLICATIONS</b>	WB, IHC				
<b>SPECIES REACTIVITY</b>	Human, Mouse				
<b>PRESUMED REACTIVITY</b>	Based on 100% sequence identity, this antibody is predicted to react with X. laevis and X. tropicalis				
<b>AMOUNT</b>	100 µl				
<b>CONCENTRATION</b>	1000 µg/ml				
<b>STORAGE/SHELF LIFE</b>	2 – 8° C / 1 year from date of receipt				
<b>PHYSICAL STATE</b>	Liquid				
<b>BUFFER</b>	Tris-citrate/phosphate buffer, pH 7 to 8 containing 0.09% Sodium Azide				
<b>ISOTYPE</b>	IgG				
<b>ORIGIN</b>	USA				
<b>PRODUCTION PROCEDURES</b>	<p>Antibody was affinity purified using a synthetic peptide representing phosphorylation at Serine 41 and surrounding residues of MCM2 immobilized on solid support.</p> <p>Immunogen for A300-117A was a synthetic phosphorylated peptide, which represented a portion of human Minichromosomal Maintenance Deficient 2 surrounding Serine 41 according to the numbering given in entry NP_004517.2 (GeneID 4171).</p> <p>Immunoglobulin concentration was determined by extinction coefficient: absorbance at 280 nm of 1.4 equals 1.0 mg of IgG.</p>				
<b>APPLICATIONS</b>	<p>Centrifuge tube to remove product from lid. Optimal working dilutions should be determined experimentally by the investigator. Prepare working dilution immediately before use.</p> <table><tr><td>Western Blot</td><td>1:5,000 – 1:20,000</td></tr><tr><td>Immunohistochemistry</td><td>1:1,000 – 1:5,000. Epitope retrieval with citrate buffer pH 6.0 is recommended for FFPE tissue sections.</td></tr></table>	Western Blot	1:5,000 – 1:20,000	Immunohistochemistry	1:1,000 – 1:5,000. Epitope retrieval with citrate buffer pH 6.0 is recommended for FFPE tissue sections.
Western Blot	1:5,000 – 1:20,000				
Immunohistochemistry	1:1,000 – 1:5,000. Epitope retrieval with citrate buffer pH 6.0 is recommended for FFPE tissue sections.				
<b>APPLICATION NOTES</b>	Western blot of lysates performed using standard western blot reagents and 4–8% SDS-PAGE.				
<b>IHC HUMAN CONTROLS</b>	Breast Carcinoma, Colon Carcinoma, Laryngeal Squamous Cell Carcinoma, Small Cell Lung Cancer				
<b>IHC MOUSE CONTROLS</b>	Squamous Cell Carcinoma				
<b>ADDITIONAL INFO</b>	<p><a href="https://www.bethyl.com/product/A300-117A">https://www.bethyl.com/product/A300-117A</a></p> <p>Use the link above to view SDS, a current list of citations, and other product specific information.</p>				

This document certifies that this product has met all of the quality control standards defined by Bethyl Laboratories, Inc.  
Eric McIntush, PhD | Chief Scientific Officer

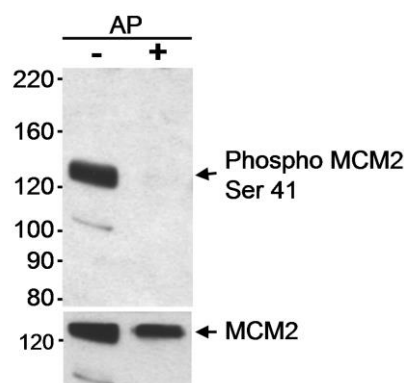
Date: June 21, 2019



**Detection of human Phospho MCM2 (S41) by western blot.** *Samples:* Whole cell lysate (50 µg) from HeLa and HEK293T cells prepared using NETN lysis buffer. *Antibody:* Affinity purified rabbit anti-Phospho MCM2 (S41) antibody A300-117A (lot A300-117A-1) used for WB at 0.1 µg/ml. *Detection:* Chemiluminescence with an exposure time of 10 seconds.



**Detection of human and mouse MCM2 (Ser41) by immunohistochemistry.** *Sample:* FFPE section of human laryngeal squamous cell carcinoma (left) and mouse squamous cell carcinoma (right). *Antibody:* Affinity purified rabbit anti-MCM2 (Ser41) (Cat. No. A300-117A Lot1) used at a dilution of 1:1,000 (1 µg/ml). *Detection:* DAB



**Detection of human Phospho MCM2 (Ser41) by western blot.** *Samples:* Whole cell lysate (30 µg) from HeLa cells that were either untreated or treated with alkaline phosphatase (AP). *Antibodies:* Affinity purified rabbit anti-phospho MCM2 (Ser41) antibody A300-117A used at 0.1 µg/ml. After probing with the phospho-specific antibodies, rabbit anti-MCM2 antibody A300-191A was used at 0.2 µg/ml to show total MCM2. *Detection:* Chemiluminescence with a 1 minute exposure.