



SZABO SCANDIC

Part of Europa Biosite

Produktinformation



Forschungsprodukte & Biochemikalien



Zellkultur & Verbrauchsmaterial



Diagnostik & molekulare Diagnostik



Laborgeräte & Service

Weitere Information auf den folgenden Seiten!
See the following pages for more information!



Lieferung & Zahlungsart

siehe unsere [Liefer- und Versandbedingungen](#)

Zuschläge

- Mindermengenzuschlag
- Trockeneiszuschlag
- Gefahrgutzuschlag
- Expressversand

SZABO-SCANDIC Handels GmbH

Quellenstraße 110, A-1100 Wien

T. +43(0)1 489 3961-0

F. +43(0)1 489 3961-7

mail@szabo-scandic.com

www.szabo-scandic.com

[linkedin.com/company/szaboscandic](https://www.linkedin.com/company/szaboscandic) 

CoREST Antibody

Rabbit Polyclonal

Antigen Affinity Purified

Protein ID NP_055971.1

Catalog No. A300-130A

GeneID 23186

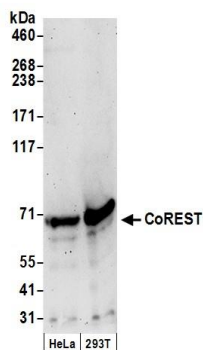
Lot No. A300-130A-1



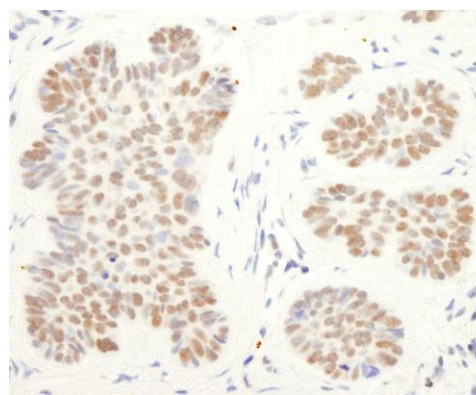
APPLICATIONS	WB, IHC
SPECIES REACTIVITY	Human
AMOUNT	100 µl
CONCENTRATION	1000 µg/ml
STORAGE/SHELF LIFE	2 – 8° C / 1 year from date of receipt
PHYSICAL STATE	Liquid
BUFFER	Tris-citrate/phosphate buffer, pH 7 to 8 containing 0.09% Sodium Azide
ISOTYPE	IgG
ORIGIN	USA
PRODUCTION PROCEDURES	<p>Antibody was affinity purified using an epitope specific to CoREST immobilized on solid support.</p> <p>The epitope recognized by A300-130A maps to a region between residues 425 and the C-terminus (residue 482) of human REST (RE1-silencing transcription factor) corepressor using the numbering given in entry NP_055971.1 (GeneID 23186)</p> <p>Immunoglobulin concentration was determined by extinction coefficient: absorbance at 280 nm of 1.4 equals 1.0 mg of IgG.</p>
APPLICATIONS	<p>Centrifuge tube to remove product from lid. Optimal working dilutions should be determined experimentally by the investigator. Prepare working dilution immediately before use.</p> <p>Western Blot 1:2,500 – 1:15,000</p> <p>Immunohistochemistry 1:500 – 1:2,000. Epitope retrieval with citrate buffer pH 6.0 is recommended for FFPE tissue sections.</p>
APPLICATION NOTES	Western blot of lysates performed using standard western blot reagents and 4-20% SDS-PAGE.
IHC HUMAN CONTROLS	Bone Marrow-Metastatic Carcinoma, Breast Carcinoma, Colon Carcinoma, Metastatic Lymph Node, Ovarian Carcinoma, Skin Basal Cell Carcinoma, Skin Squamous Cell Carcinoma, Stomach Adenocarcinoma, Testicular Seminoma
ADDITIONAL INFO	<p>https://www.bethyl.com/product/A300-130A</p> <p>Use the link above to view SDS, a current list of citations, and other product specific information.</p>

This document certifies that this product has met all of the quality control standards defined by Bethyl Laboratories, Inc.
Eric McIntush, PhD | Chief Scientific Officer

Date: June 21, 2019



Detection of human CoREST by western blot. *Samples:* Whole cell lysate (50 µg) from HeLa and HEK293T cells prepared using NETN lysis buffer. *Antibody:* Affinity purified rabbit anti-CoREST antibody A300-130A (lot A300-130A-1) used for WB at 0.66 µg/ml. *Detection:* Chemiluminescence with an exposure time of 3 minutes.



Detection of human CoREST by immunohistochemistry. *Sample:* FFPE section of human skin carcinoma. *Antibody:* Affinity purified rabbit anti-CoREST (Cat. No. A300-130A) used at a dilution of 1:5,000 (0.2 µg/ml). *Detection:* DAB