



# SZABO SCANDIC

Part of Europa Biosite

## Produktinformation



Forschungsprodukte & Biochemikalien



Zellkultur & Verbrauchsmaterial



Diagnostik & molekulare Diagnostik



Laborgeräte & Service

Weitere Information auf den folgenden Seiten!  
See the following pages for more information!



### Lieferung & Zahlungsart

siehe unsere [Liefer- und Versandbedingungen](#)

### Zuschläge

- Mindermengenzuschlag
- Trockeneiszuschlag
- Gefahrgutzuschlag
- Expressversand

### SZABO-SCANDIC Handels GmbH

Quellenstraße 110, A-1100 Wien

T. +43(0)1 489 3961-0

F. +43(0)1 489 3961-7

[mail@szabo-scandic.com](mailto:mail@szabo-scandic.com)

[www.szabo-scandic.com](http://www.szabo-scandic.com)

[linkedin.com/company/szaboscandic](https://www.linkedin.com/company/szaboscandic) 

# Sp1 Antibody

Rabbit Polyclonal

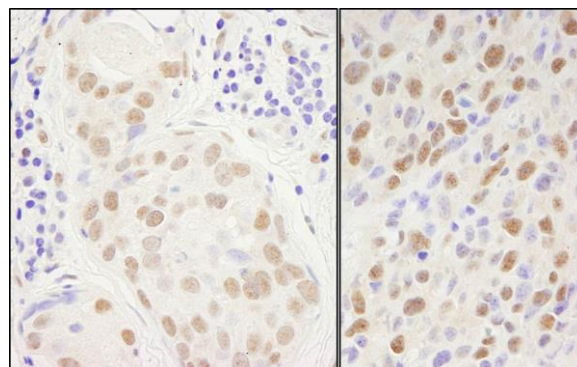
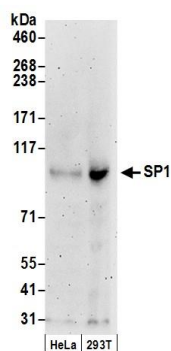
Antigen Affinity Purified Protein ID XP\_028606.4

Catalog No. A300-133A-T GenelD 6667

Lot No. A300-133A-T-1

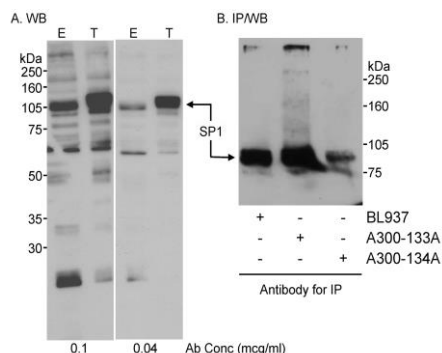
<b>APPLICATIONS</b>	WB, IP, IHC
<b>SPECIES REACTIVITY</b>	Human, Mouse
<b>PRESUMED REACTIVITY</b>	Based on 100% sequence identity, this antibody is predicted to react with Rat
<b>AMOUNT</b>	10 µl
<b>CONCENTRATION</b>	1000 µg/ml
<b>STORAGE/SHELF LIFE</b>	2 – 8°C / 1 year from date of receipt
<b>PHYSICAL STATE</b>	Liquid
<b>BUFFER</b>	Tris-citrate/phosphate buffer, pH 7 to 8 containing 0.09% Sodium Azide
<b>ISOTYPE</b>	IgG
<b>ORIGIN</b>	USA
<b>PRODUCTION PROCEDURES</b>	Antibody was affinity purified using the antigen immobilized on solid support.  The epitope recognized by A300-133A-T maps to a region between residues 700 and 740 using the numbering given in entry XP_028606.4 (GenelD 6667).  Immunoglobulin concentration was determined by extinction coefficient: absorbance at 280 nm of 1.4 equals 1.0 mg of IgG.
<b>APPLICATIONS</b>	Centrifuge tube to remove product from lid. Optimal working dilutions should be determined experimentally by the investigator. Prepare working dilution immediately before use.  Western Blot 1:10,000 – 1:25,000  Immunoprecipitation 1 – 4 µg/mg lysate  Immunohistochemistry 1:500 – 1:2,000. Epitope retrieval with citrate buffer pH 6.0 is recommended for FFPE tissue sections.
<b>ADDITIONAL INFO</b>	<a href="https://www.bethyl.com/product/A300-133A-T">https://www.bethyl.com/product/A300-133A-T</a> Use the link above to view SDS, a current list of citations, and other product specific information. IP-western blot protocol: <a href="https://www.bethyl.com/content/protocol_IP_WB">https://www.bethyl.com/content/protocol_IP_WB</a>

This document certifies that this product has met all of the quality control standards defined by Bethyl Laboratories, Inc.  
Michael Spencer, PhD Date: June 6, 2022



**Detection of human SP1 by western blot.** *Samples:* Whole cell lysate (50 µg) from HeLa and HEK293T cells prepared using NETN lysis buffer. *Antibody:* Affinity purified rabbit anti-SP1 antibody A300-133A (lot A300-133A-1) used for WB at 0.04 µg/ml. *Detection:* Chemiluminescence with an exposure time of 3 minutes.

**Detection of human and mouse SP1 by immunohistochemistry.** *Sample:* FFPE sections of human breast carcinoma (left) and mouse squamous cell carcinoma (right). *Antibody:* Affinity purified rabbit anti-Sp1 (Cat. No. A300-133A Lot1) used at a dilution of 1:1,000 (1 µg/ml). *Detection:* DAB



**Detection of human SP1 by western blot and immunoprecipitation.** *Samples:* A. Whole cell lysate (50 µg for E; 10 µg for T) from HEK HEK293T cells that were mock transfected (E) or transfected with an Sp1 expression construct (T). B. Whole cell lysate (~700 µg) from HEK 293T cells. *Antibody:* A. Affinity purified rabbit anti-Sp1 antibody A300-133A used at the indicated concentrations. B. SP1 was immunoprecipitated using affinity purified rabbit anti-SP1 antibodies BL937, A300-133A, or A300-134A using each antibody at 3.75 µg/mg lysate. Subsequently, A300-133A was used at 0.04 µg/ml for WB. *Detection:* Chemiluminescence with an exposure time of 10 seconds (A) or 1 min (B).