



SZABO SCANDIC

Part of Europa Biosite

Produktinformation



Forschungsprodukte & Biochemikalien



Zellkultur & Verbrauchsmaterial



Diagnostik & molekulare Diagnostik



Laborgeräte & Service

Weitere Information auf den folgenden Seiten!
See the following pages for more information!



Lieferung & Zahlungsart

siehe unsere [Liefer- und Versandbedingungen](#)

Zuschläge

- Mindermengenzuschlag
- Trockeneiszuschlag
- Gefahrgutzuschlag
- Expressversand

SZABO-SCANDIC HandelsgmbH

Quellenstraße 110, A-1100 Wien

T. +43(0)1 489 3961-0

F. +43(0)1 489 3961-7

mail@szabo-scandic.com

www.szabo-scandic.com

[linkedin.com/company/szaboscandic](https://www.linkedin.com/company/szaboscandic) 

RFC1 Antibody

Goat Polyclonal

Antigen Affinity Purified

Protein ID NP_002904.3

Catalog No. A300-141A

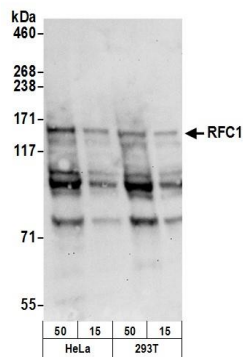
GeneID 5981

Lot No. A300-141A-2

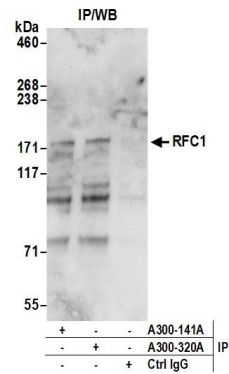


| | |
|------------------------------|--|
| APPLICATIONS | WB, IP |
| SPECIES REACTIVITY | Human |
| AMOUNT | 100 µl |
| CONCENTRATION | 1000 µg/ml |
| STORAGE/SHELF LIFE | 2 – 8° C / 1 year from date of receipt |
| PHYSICAL STATE | Liquid |
| BUFFER | Tris-citrate/phosphate buffer, pH 7 to 8 containing 0.09% Sodium Azide |
| ISOTYPE | IgG |
| ORIGIN | USA |
| PRODUCTION PROCEDURES | <p>Antibody was affinity purified using an epitope specific to RFC1 immobilized on solid support.</p> <p>The epitope recognized by A300-141A maps to a region between residue 1100 and the C-terminus (residue 1148) of human Replication Factor C subunit 1 using the numbering given in entry NP_002904.3 (GeneID 5981).</p> <p>Immunoglobulin concentration was determined by extinction coefficient: absorbance at 280 nm of 1.4 equals 1.0 mg of IgG.</p> |
| APPLICATIONS | <p>Centrifuge tube to remove product from lid. Optimal working dilutions should be determined experimentally by the investigator. Prepare working dilution immediately before use.</p> <p>Western Blot 1:2,000 – 1:10,000</p> <p>Immunoprecipitation 2 – 10 µg/mg lysate</p> |
| APPLICATION NOTES | Western blot of lysates performed using standard western blot reagents and 4–8% SDS-PAGE. |
| ADDITIONAL INFO | <p>https://www.bethyl.com/product/A300-141A</p> <p>Use the link above to view SDS, a current list of citations, and other product specific information.</p> |

This document certifies that this product has met all of the quality control standards defined by Bethyl Laboratories, Inc.
Eric McIntush, PhD | Chief Scientific Officer Date: June 21, 2019



Detection of human RFC1 by western blot. *Samples:* Whole cell lysate (50, 15 µg) from HeLa and HEK293T cells prepared using NETN lysis buffer. *Antibody:* Affinity purified goat anti-RFC1 antibody A300-141A (lot A300-141A-2) used for WB at 0.1 µg/ml. *Detection:* Chemiluminescence with an exposure time of 30 seconds.



Detection of human RFC1 by western blot of immunoprecipitates. *Samples:* Whole cell lysate (0.5 or 1.0 mg per IP reaction; 20% of IP loaded) from HeLa cells prepared using NETN lysis buffer. *Antibodies:* Affinity purified goat anti-RFC1 antibody A300-141A (lot A300-141A-2) used for IP at 6 µg per reaction. RFC1 was also immunoprecipitated by rabbit anti-RFC1 antibody A300-320A. For blotting immunoprecipitated RFC1, A300-141A was used at 0.4 µg/ml. *Detection:* Chemiluminescence with an exposure time of 10 seconds.