



SZABO SCANDIC

Part of Europa Biosite

Produktinformation



Forschungsprodukte & Biochemikalien



Zellkultur & Verbrauchsmaterial



Diagnostik & molekulare Diagnostik



Laborgeräte & Service

Weitere Information auf den folgenden Seiten!
See the following pages for more information!



Lieferung & Zahlungsart

siehe unsere [Liefer- und Versandbedingungen](#)

Zuschläge

- Mindermengenzuschlag
- Trockeneiszuschlag
- Gefahrgutzuschlag
- Expressversand

SZABO-SCANDIC HandelsgmbH

Quellenstraße 110, A-1100 Wien

T. +43(0)1 489 3961-0

F. +43(0)1 489 3961-7

mail@szabo-scandic.com

www.szabo-scandic.com

[linkedin.com/company/szaboscandic](https://www.linkedin.com/company/szaboscandic) 

Phospho XRCC1 (S461) Antibody

Rabbit Polyclonal

Antigen Affinity Purified

Protein ID P18887

Catalog No. A300-147A

GeneID 7515

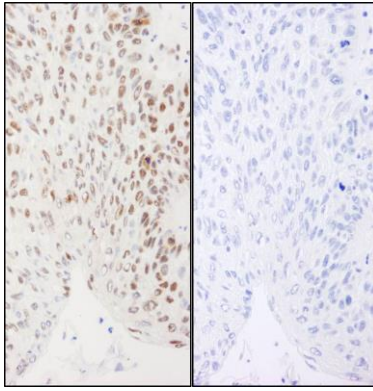
Lot No. A300-147A-1



APPLICATIONS	WB, IHC				
SPECIES REACTIVITY	Human				
AMOUNT	100 µl				
CONCENTRATION	1000 µg/ml				
STORAGE/SHELF LIFE	2 – 8° C / 1 year from date of receipt				
PHYSICAL STATE	Liquid				
BUFFER	Tris-citrate/phosphate buffer, pH 7 to 8 containing 0.09% Sodium Azide				
ISOTYPE	IgG				
ORIGIN	USA				
PRODUCTION PROCEDURES	<p>Antibody was affinity purified using an epitope specific to phosphorylation at Ser 461 of XRCC1 immobilized on solid support.</p> <p>The epitope recognized by A300-147A maps to a region of surrounding residue Ser 416 of human X-ray Repair Complementing protein 1 using the numbering given in SwissProt entry P18887 (GeneID 7515).</p> <p>Immunoglobulin concentration was determined by extinction coefficient: absorbance at 280 nm of 1.4 equals 1.0 mg of IgG.</p>				
APPLICATIONS	<p>Centrifuge tube to remove product from lid. Optimal working dilutions should be determined experimentally by the investigator. Prepare working dilution immediately before use.</p> <table><tr><td>Western Blot</td><td>1:1,000 – 1:5,000</td></tr><tr><td>Immunohistochemistry</td><td>1:500 – 1:2,000. Epitope retrieval with citrate buffer pH 6.0 is recommended for FFPE tissue sections.</td></tr></table>	Western Blot	1:1,000 – 1:5,000	Immunohistochemistry	1:500 – 1:2,000. Epitope retrieval with citrate buffer pH 6.0 is recommended for FFPE tissue sections.
Western Blot	1:1,000 – 1:5,000				
Immunohistochemistry	1:500 – 1:2,000. Epitope retrieval with citrate buffer pH 6.0 is recommended for FFPE tissue sections.				
APPLICATION NOTES	Western blot of lysates performed using standard western blot reagents and 4–8% SDS-PAGE.				
IHC HUMAN CONTROLS	Breast Carcinoma, Laryngeal Squamous Cell Carcinoma, Ovarian Carcinoma, Prostate Carcinoma				
ADDITIONAL INFO	<p>https://www.bethyl.com/product/A300-147A</p> <p>Use the link above to view SDS, a current list of citations, and other product specific information.</p>				

This document certifies that this product has met all of the quality control standards defined by Bethyl Laboratories, Inc.
Eric McIntush, PhD | Chief Scientific Officer

Date: June 21, 2019



Detection of human Phospho XRCC1 (S461) by immunohistochemistry. *Samples:* FFPE serial sections of human larynx squamous cell carcinoma. Mock phosphatase treated section (left) and calf intestinal phosphatase-treated section (right). *Antibody:* Affinity purified rabbit anti-Phospho XRCC1 (S461). (Cat. No. A300-147A Lot1) used at a dilution of 1:1,000 (1 µg/ml. *Detection:* DAB