



# SZABO SCANDIC

Part of Europa Biosite

## Produktinformation



Forschungsprodukte & Biochemikalien



Zellkultur & Verbrauchsmaterial



Diagnostik & molekulare Diagnostik



Laborgeräte & Service

Weitere Information auf den folgenden Seiten!  
See the following pages for more information!



### Lieferung & Zahlungsart

siehe unsere [Liefer- und Versandbedingungen](#)

### Zuschläge

- Mindermengenzuschlag
- Trockeneiszuschlag
- Gefahrgutzuschlag
- Expressversand

### SZABO-SCANDIC Handels GmbH

Quellenstraße 110, A-1100 Wien

T. +43(0)1 489 3961-0

F. +43(0)1 489 3961-7

[mail@szabo-scandic.com](mailto:mail@szabo-scandic.com)

[www.szabo-scandic.com](http://www.szabo-scandic.com)

[linkedin.com/company/szaboscandic](https://www.linkedin.com/company/szaboscandic) 

# ZCWCC1 Antibody

Rabbit Polyclonal

Antigen Affinity Purified

Protein ID NP\_055756.1

Catalog No. A300-149A-T

GeneID 22880

Lot No. A300-149A-T-3

<b>APPLICATIONS</b>	WB, IP
<b>SPECIES REACTIVITY</b>	Human
<b>AMOUNT</b>	10 µl
<b>CONCENTRATION</b>	1000 µg/ml
<b>STORAGE/SHELF LIFE</b>	2 – 8°C / 1 year from date of receipt
<b>PHYSICAL STATE</b>	Liquid
<b>BUFFER</b>	Tris-citrate/phosphate buffer, pH 7 to 8 containing 0.09% Sodium Azide
<b>ISOTYPE</b>	IgG
<b>ORIGIN</b>	USA
<b>PRODUCTION PROCEDURES</b>	Antibody was affinity purified using an epitope specific to ZCWCC1 immobilized on solid support.

The epitope recognized by A300-149A-T maps to a region between residues 600 and 700 of human zinc finger, CW-type with coiled-coil domain 1 using the numbering given in entry NP\_055756.1 (GeneID 22880).

Immunoglobulin concentration was determined by extinction coefficient: absorbance at 280 nm of 1.4 equals 1.0 mg of IgG.

**APPLICATIONS** Centrifuge tube to remove product from lid. Optimal working dilutions should be determined experimentally by the investigator. Prepare working dilution immediately before use.

Western Blot 1:2,000 – 1:10,000

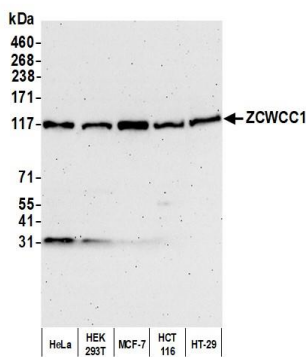
Immunoprecipitation 2 – 10 µg/mg lysate

**ADDITIONAL INFO** <https://www.bethyl.com/product/A300-149A-T>

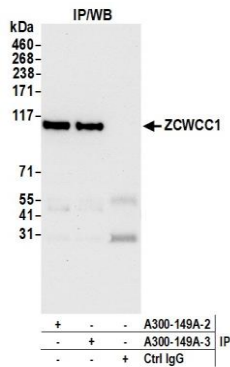
Use the link above to view SDS, a current list of citations, and other product specific information.

IP-western blot protocol: [https://www.bethyl.com/content/protocol\\_IP\\_WB](https://www.bethyl.com/content/protocol_IP_WB)

This document certifies that this product has met all of the quality control standards defined by Bethyl Laboratories, Inc.  
Michael Spencer, PhD Date: June 3, 2022



**Detection of human ZCWCC1 by western blot.** *Samples:* Whole cell lysate (50 µg) from HeLa, HEK293T, MCF-7, HCT 116, and HT-29 cells prepared using NETN lysis buffer. *Antibody:* Affinity purified rabbit anti-ZCWCC1 antibody(A300-149A lot 3) used for WB at 0.4 µg/ml. *Detection:* Chemiluminescence with an exposure time of 3 minutes.



**Detection of human ZCWCC1 by western blot of immunoprecipitates.** *Samples:* Whole cell lysate (1.0 mg per IP reaction; 20% of IP loaded) from HEK293T cells prepared using NETN lysis buffer. *Antibodies:* Affinity purified rabbit anti-ZCWCC1 antibody (A300-149A lot 3) used for IP at 6 µg per reaction. ZCWCC1 was also immunoprecipitated by a previous lot of this antibody (A300-149A lot 2). For blotting immunoprecipitated ZCWCC1, A300-149A was used at 0.1 µg/ml. *Detection:* Chemiluminescence with an exposure time of 10 seconds.