



# SZABO SCANDIC

Part of Europa Biosite

## Produktinformation



Forschungsprodukte & Biochemikalien



Zellkultur & Verbrauchsmaterial



Diagnostik & molekulare Diagnostik



Laborgeräte & Service

Weitere Information auf den folgenden Seiten!  
See the following pages for more information!



### Lieferung & Zahlungsart

siehe unsere [Liefer- und Versandbedingungen](#)

### Zuschläge

- Mindermengenzuschlag
- Trockeneiszuschlag
- Gefahrgutzuschlag
- Expressversand

### SZABO-SCANDIC HandelsgmbH

Quellenstraße 110, A-1100 Wien

T. +43(0)1 489 3961-0

F. +43(0)1 489 3961-7

[mail@szabo-scandic.com](mailto:mail@szabo-scandic.com)

[www.szabo-scandic.com](http://www.szabo-scandic.com)

[linkedin.com/company/szaboscandic](https://www.linkedin.com/company/szaboscandic) 

# Phospho Rad17 (S645) Antibody

Rabbit Polyclonal

Antigen Affinity Purified	Protein ID	NP_002864.1
Catalog No. A300-153A-T	GeneID	5884
Lot No. A300-153A-T-2		

---

<b>APPLICATIONS</b>	WB, IHC
<b>SPECIES REACTIVITY</b>	Human, Mouse
<b>PRESUMED REACTIVITY</b>	Based on 100% sequence identity, this antibody is predicted to react with Orangutan
<b>AMOUNT</b>	10 µl
<b>CONCENTRATION</b>	1000 µg/ml
<b>STORAGE/SHELF LIFE</b>	2 – 8°C / 1 year from date of receipt
<b>PHYSICAL STATE</b>	Liquid
<b>BUFFER</b>	Tris-citrate/phosphate buffer, pH 7 to 8 containing 0.09% Sodium Azide
<b>ISOTYPE</b>	IgG
<b>ORIGIN</b>	USA
<b>PRODUCTION PROCEDURES</b>	Antibody was affinity purified using a synthetic peptide representing phosphorylation at Serine 645 and surrounding residues of Rad17 immobilized on solid support.

Immunogen for A300-153A-T was a phosphorylated synthetic peptide, which represented a portion of human Rad17 (GeneID 5884) around serine 645 according to the numbering given in entry NP\_002864.1.

**APPLICATIONS** Centrifuge tube to remove product from lid. Optimal working dilutions should be determined experimentally by the investigator. Prepare working dilution immediately before use.

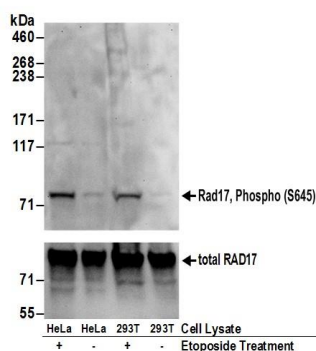
Western Blot 1:1,000 – 1:5,000

Immunohistochemistry 1:500 – 1:2,000. Epitope retrieval with citrate buffer pH 6.0 is recommended for FFPE tissue sections.

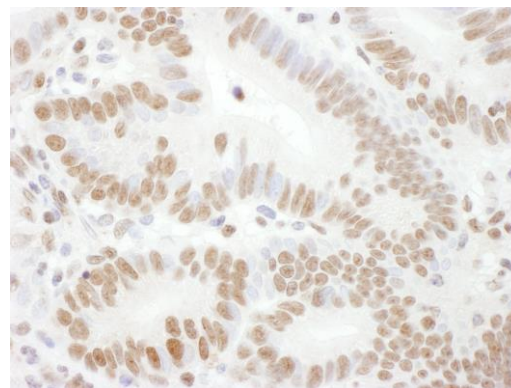
**ADDITIONAL INFO** <https://www.bethyl.com/product/A300-153A-T>

Use the link above to view SDS, a current list of citations, and other product specific information.

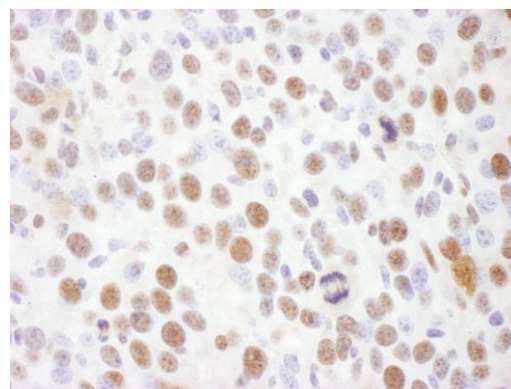
This document certifies that this product has met all of the quality control standards defined by Bethyl Laboratories, Inc.  
Michael Spencer, PhD Date: June 6, 2022



**Detection of human Rad17, Phospho (S645) by western blot.** *Samples:* Whole cell lysate (50 µg) from HeLa and HEK293T cells treated with 100 µM etoposide for 2 hours (+) or mock treated (-) cells. *Antibodies:* Affinity purified rabbit anti-Rad17, Phospho (S645) antibody A300-153A (lot A300-153A-2) used for WB at 0.4 µg/ml. To examine total Rad17, the membrane was reblotted with goat anti-Rad17 antibody BL239 (lower panel). *Detection:* Chemiluminescence with exposure times of 30 seconds (upper and lower panels).



**Detection of human Phospho Rad17 (S645) by immunohistochemistry.** *Sample:* FFPE section of human colon carcinoma. *Antibody:* Affinity purified rabbit anti-Phospho Rad17 (S645) (Cat. No. A300-153A Lot2) used at a dilution of 1:1,000 (1 µg/ml). *Detection:* DAB



**Detection of mouse Phospho Rad17 (S645) by immunohistochemistry.** *Sample:* FFPE section of mouse renal cell carcinoma. *Antibody:* Affinity purified rabbit anti-Phospho Rad17 (S645) (Cat. No. A300-153A Lot2) used at a dilution of 1:1,000 (1 µg/ml). *Detection:* DAB