



SZABO SCANDIC

Part of Europa Biosite

Produktinformation



Forschungsprodukte & Biochemikalien



Zellkultur & Verbrauchsmaterial



Diagnostik & molekulare Diagnostik



Laborgeräte & Service

Weitere Information auf den folgenden Seiten!
See the following pages for more information!



Lieferung & Zahlungsart

siehe unsere [Liefer- und Versandbedingungen](#)

Zuschläge

- Mindermengenzuschlag
- Trockeneiszuschlag
- Gefahrgutzuschlag
- Expressversand

SZABO-SCANDIC Handels GmbH

Quellenstraße 110, A-1100 Wien

T. +43(0)1 489 3961-0

F. +43(0)1 489 3961-7

mail@szabo-scandic.com

www.szabo-scandic.com

[linkedin.com/company/szaboscandic](https://www.linkedin.com/company/szaboscandic) 

SA1 Antibody

Goat Polyclonal

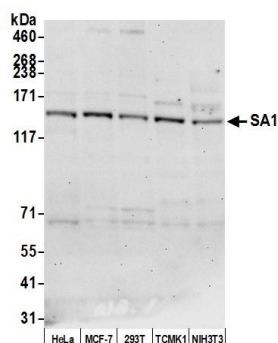
Antigen Affinity Purified Protein ID NP_005853.2

Catalog No. A300-156A-T GeneID 10274

Lot No. A300-156A-T-2

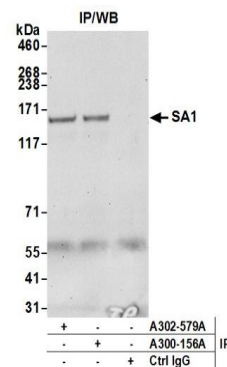
APPLICATIONS	WB, IP, ICC
SPECIES REACTIVITY	Human, Mouse
AMOUNT	10 µl
CONCENTRATION	1000 µg/ml
STORAGE/SHELF LIFE	2 – 8°C / 1 year from date of receipt
PHYSICAL STATE	Liquid
BUFFER	Tris-citrate/phosphate buffer, pH 7 to 8 containing 0.09% Sodium Azide
ISOTYPE	IgG
ORIGIN	USA
PRODUCTION PROCEDURES	Antibody was affinity purified using an epitope specific to SA1 immobilized on solid support. The epitope recognized by A300-156A-T maps to a region between residues 25 and 75 of human Stromal Antigen 1 using the numbering given in entry NP_005853.2 (GeneID 10274).
APPLICATIONS	Centrifuge tube to remove product from lid. Optimal working dilutions should be determined experimentally by the investigator. Prepare working dilution immediately before use. Western Blot 1:2,000 – 1:10,000 Immunoprecipitation 2 – 10 µg/mg lysate Immunocytochemistry 1:500 – 1:2,000
ADDITIONAL INFO	https://www.bethyl.com/product/A300-156A-T Use the link above to view SDS, a current list of citations, and other product specific information.

This document certifies that this product has met all of the quality control standards defined by Bethyl Laboratories, Inc.
Michael Spencer, PhD Date: June 6, 2022



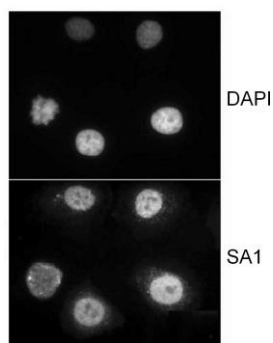
Detection of human and mouse SA1 by western blot.

Samples: Whole cell lysate (15 µg) from HeLa, MCF-7, HEK293T, TCMK-1, and NIH 3T3 cells prepared using NETN lysis buffer. **Antibody:** Affinity purified rabbit anti-SA1 antibody A300-156A (lot A300-156A-2) used for WB at 0.1 µg/ml. **Detection:** Chemiluminescence with an exposure time of 30 seconds.



Detection of human SA1 by western blot of immunoprecipitates.

Samples: Whole cell lysate (1.0 mg per IP reaction; 20% of IP loaded) from HeLa cells prepared using NETN lysis buffer. **Antibodies:** Affinity purified rabbit anti-SA1 antibody A300-156A (lot A300-156A-2) used for IP at 6 µg per reaction. SA1 was also immunoprecipitated by rabbit anti-SA1 antibody A302-579A. For blotting immunoprecipitated SA1, A300-156A was used at 0.1 µg/ml. **Detection:** Chemiluminescence with an exposure time of 30 seconds.



Localization of human SA1. **Sample:** HeLa cells that were extracted for 5 min at 4C in 0.5% Triton in CSK buffer. **Antibody:** Affinity purified goat anti-SA1 (BL140G; A300-156A) used at 1 µg/ml.