



SZABO SCANDIC

Part of Europa Biosite

Produktinformation



Forschungsprodukte & Biochemikalien



Zellkultur & Verbrauchsmaterial



Diagnostik & molekulare Diagnostik



Laborgeräte & Service

Weitere Information auf den folgenden Seiten!
See the following pages for more information!



Lieferung & Zahlungsart

siehe unsere [Liefer- und Versandbedingungen](#)

Zuschläge

- Mindermengenzuschlag
- Trockeneiszuschlag
- Gefahrgutzuschlag
- Expressversand

SZABO-SCANDIC HandelsgmbH

Quellenstraße 110, A-1100 Wien

T. +43(0)1 489 3961-0

F. +43(0)1 489 3961-7

mail@szabo-scandic.com

www.szabo-scandic.com

[linkedin.com/company/szaboscandic](https://www.linkedin.com/company/szaboscandic) 

SA1 Antibody

Goat Polyclonal

Antigen Affinity Purified	RefSeq ID	NP_005853.2
Catalog No. A300-157A	Uniprot ID	Q8WVM7
Lot No. 4	GenelD	10274

APPLICATIONS	WB, IP, ICC
SPECIES REACTIVITY	Human
AMOUNT	100 µl
CONCENTRATION	1000 µg/ml
STORAGE/SHELF LIFE	2 – 8°C / 1 year from date of receipt
PHYSICAL STATE	Liquid
BUFFER	Tris-citrate/phosphate buffer, pH 7 to 8 containing 0.09% Sodium Azide
ISOTYPE	IgG
ORIGIN	USA
PRODUCTION PROCEDURES	Antibody was affinity purified using an epitope specific to SA1 immobilized on solid support.

The epitope recognized by A300-157A maps to a region between residues 1150 and 1200 of human Stromal Antigen 1 using the numbering given in entry NP_005853.2 (GenelD 10274).

Immunoglobulin concentration was determined using Beer's Law where 1mg/mL IgG has an A280 of 1.4.

APPLICATIONS	Centrifuge tube to remove product from lid. Optimal working dilutions should be determined experimentally by the investigator. Prepare working dilution immediately before use.
	Western Blot 1:2000 – 1:10,000
	Immunoprecipitation 6 µg/mg lysate
	Immunocytochemistry 1:500 – 1:2000

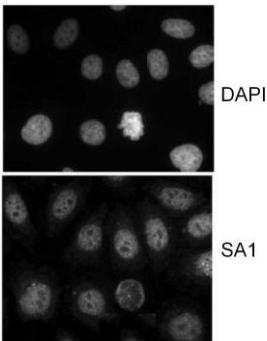
ADDITIONAL INFO	https://www.fortislife.com/p/A300-157A Use the link above to view SDS, a current list of citations, and other product specific information.
------------------------	---

This document certifies that this product has met all of the quality control standards defined by Bethyl Laboratories, Inc.
Michael Spencer, PhD Date: May 10, 2024



Detection of human SA1 by western blot. *Samples:* Whole cell lysate (25 µg) from HeLa, HEK293T, Jurkat, MCF-7, and GaMG cells prepared using NETN lysis buffer. *Antibody:* Affinity purified goat anti-SA1 antibody (A300-157A lot 4) used for WB at 0.1 µg/ml. *Detection:* Chemiluminescence with an exposure time of 30 seconds.

Detection of human SA1 by western blot of immunoprecipitates. *Samples:* Whole cell lysate (1.0 mg per IP reaction; 15% of IP loaded) from HeLa cells prepared using NETN lysis buffer. *Antibodies:* Affinity purified rabbit anti-SA1 antibody (A300-157A lot 4) used for IP at 6 µg per reaction. SA1 was also immunoprecipitated by a previous lot of this antibody (A300-157A lot 3) and a second antibody against a different epitope of SA1 (A302-578A). For blotting immunoprecipitated SA1, A300-157A was used at 0.1 µg/ml. *Detection:* Chemiluminescence with an exposure time of 30 seconds.



Localization of human SA1. *Sample:* HeLa cells that were extracted for 5 min. at 4C in 0.5% Triton in CSK buffer. *Antibody:* Affinity purified goat anti-SA1 (A300-157A) used at 1 µg/ml.