



SZABO SCANDIC

Part of Europa Biosite

Produktinformation



Forschungsprodukte & Biochemikalien



Zellkultur & Verbrauchsmaterial



Diagnostik & molekulare Diagnostik



Laborgeräte & Service

Weitere Information auf den folgenden Seiten!
See the following pages for more information!



Lieferung & Zahlungsart

siehe unsere [Liefer- und Versandbedingungen](#)

Zuschläge

- Mindermengenzuschlag
- Trockeneiszuschlag
- Gefahrgutzuschlag
- Expressversand

SZABO-SCANDIC HandelsgmbH

Quellenstraße 110, A-1100 Wien

T. +43(0)1 489 3961-0

F. +43(0)1 489 3961-7

mail@szabo-scandic.com

www.szabo-scandic.com

[linkedin.com/company/szaboscandic](https://www.linkedin.com/company/szaboscandic) 

SA2 Antibody

Goat Polyclonal

Antigen Affinity Purified Protein ID NP_006594.3

Catalog No. A300-158A-T GeneID 10735

Lot No. A300-158A-T-2

APPLICATIONS	WB, ICC
SPECIES REACTIVITY	Human, Mouse
AMOUNT	10 µl
CONCENTRATION	1000 µg/ml
STORAGE/SHELF LIFE	2 – 8°C / 1 year from date of receipt
PHYSICAL STATE	Liquid
BUFFER	Tris-citrate/phosphate buffer, pH 7 to 8 containing 0.09% Sodium Azide
ISOTYPE	IgG
ORIGIN	USA
PRODUCTION PROCEDURES	Antibody was affinity purified using an epitope specific to SA2 immobilized on solid support. The epitope recognized by A300-158A-T maps to a region between residues 1100 and 1150 of human Stromal Antigen 2 using the numbering given in entry NP_006594.3 (GeneID 10735).

Immunoglobulin concentration was determined by extinction coefficient: absorbance at 280 nm of 1.4 equals 1.0 mg of IgG.

APPLICATIONS Centrifuge tube to remove product from lid. Optimal working dilutions should be determined experimentally by the investigator. Prepare working dilution immediately before use.

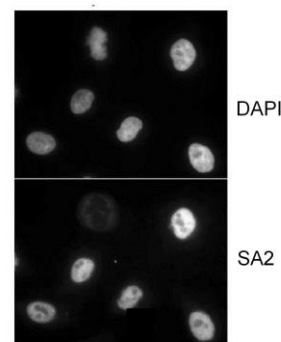
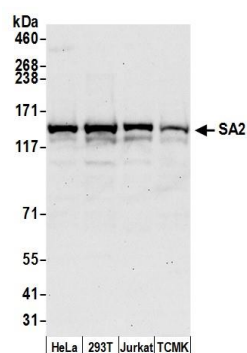
Western Blot 1:2,000 – 1:10,000

Immunocytochemistry 1:500 – 1:2,000

ADDITIONAL INFO <https://www.bethyl.com/product/A300-158A-T>

Use the link above to view SDS, a current list of citations, and other product specific information.

This document certifies that this product has met all of the quality control standards defined by Bethyl Laboratories, Inc.
Michael Spencer, PhD Date: June 6, 2022

**Detection of human and mouse SA2 by western blot.**

Samples: Whole cell lysate (50 µg) from HeLa, HEK293T, Jurkat, and mouse TCMK-1 cells prepared using NETN lysis buffer. **Antibody:** Affinity purified goat anti-SA2 antibody A300-158A (lot A300-158A-2) used for WB at 0.1 µg/ml.

Detection: Chemiluminescence with an exposure time of 30 seconds.

Localization of human SA2. *Sample:* HeLa cells that were extracted for 5 min. at 4C in 0.5% Triton in CSK buffer.

Antibody: Affinity purified goat anti-SA2 (BL146G; Cat. No. A300-158A) used at 1 µg/ml.