



SZABO SCANDIC

Part of Europa Biosite

Produktinformation



Forschungsprodukte & Biochemikalien



Zellkultur & Verbrauchsmaterial



Diagnostik & molekulare Diagnostik



Laborgeräte & Service

Weitere Information auf den folgenden Seiten!
See the following pages for more information!



Lieferung & Zahlungsart

siehe unsere [Liefer- und Versandbedingungen](#)

Zuschläge

- Mindermengenzuschlag
- Trockeneiszuschlag
- Gefahrgutzuschlag
- Expressversand

SZABO-SCANDIC Handels GmbH

Quellenstraße 110, A-1100 Wien

T. +43(0)1 489 3961-0

F. +43(0)1 489 3961-7

mail@szabo-scandic.com

www.szabo-scandic.com

[linkedin.com/company/szaboscandic](https://www.linkedin.com/company/szaboscandic)



SA2 Antibody

Goat Polyclonal

Antigen Affinity Purified	RefSeq ID	NP_006594.3
Catalog No. A300-159A-T	Uniprot ID	Q8N3U4
Lot No. 3	GeneID	10735

APPLICATIONS	WB, IP, ICC
SPECIES REACTIVITY	Human, Mouse
AMOUNT	10 µl
CONCENTRATION	1000 µg/ml
STORAGE/SHELF LIFE	2 – 8°C / 1 year from date of receipt
PHYSICAL STATE	Liquid
BUFFER	Tris-citrate/phosphate buffer, pH 7 to 8 containing 0.09% Sodium Azide
ISOTYPE	IgG
ORIGIN	USA
PRODUCTION PROCEDURES	Antibody was affinity purified using an epitope specific to SA2 immobilized on solid support.

The epitope recognized by A300-159A-T maps to a region between residues 1125 and 1175 of human Stromal Antigen 2 using the numbering given in entry NP_006594.3 (GeneID 10735).

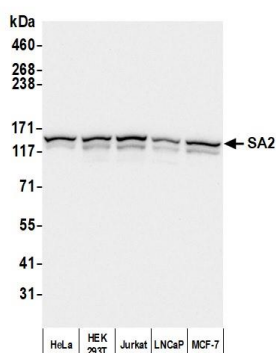
Immunoglobulin concentration was determined by extinction coefficient: absorbance at 280 nm of 1.4 equals 1.0 mg of IgG.

APPLICATIONS	Centrifuge tube to remove product from lid. Optimal working dilutions should be determined experimentally by the investigator. Prepare working dilution immediately before use.
	Western Blot 1:1,000 – 1:10,000
	Immunoprecipitation 2 – 10 µg/mg lysate
	Immunocytochemistry 1:500 – 1:2,000

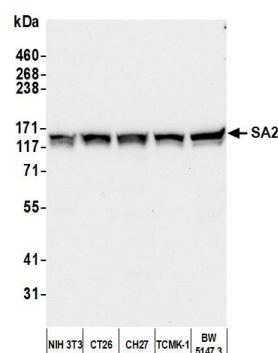
IHC HUMAN CONTROLS HeLa Cells

ADDITIONAL INFO <https://www.fortislife.com/p/A300-159A-T>
Use the link above to view SDS, a current list of citations, and other product specific information.

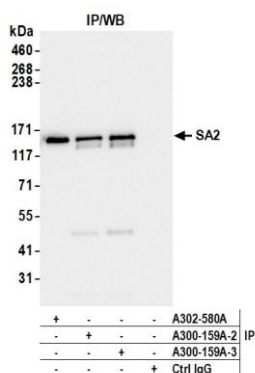
This document certifies that this product has met all of the quality control standards defined by Bethyl Laboratories, Inc.
Michael Spencer, PhD Date: April 19, 2023



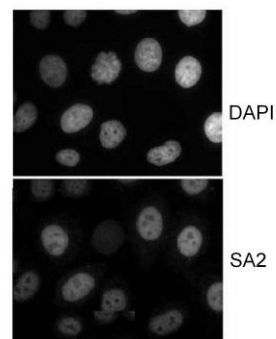
Detection of human SA2 by western blot. *Samples:* Whole cell lysate (50 µg) from HeLa, HEK293T, Jurkat, LNCaP, and MCF-7 cells prepared using NETN lysis buffer. *Antibody:* Affinity purified Goat anti-SA2 antibody (A300-159A lot 3) used for WB at 0.1 µg/ml. *Detection:* Chemiluminescence with an exposure time of 10 seconds.



Detection of mouse SA2 by western blot. *Samples:* Whole cell lysate (50 µg) from NIH 3T3, CT26, CH27, TCMK-1, and BW5147.3 cells prepared using NETN lysis buffer. *Antibody:* Affinity purified Goat anti-SA2 antibody (A300-159A lot 3) used for WB at 0.1 µg/ml. *Detection:* Chemiluminescence with an exposure time of 30 seconds.



Detection of human SA2 by western blot of immunoprecipitates. *Samples:* Whole cell lysate (1.0 mg per IP reaction; 20% of IP loaded) from HEK293T cells prepared using NETN lysis buffer. *Antibodies:* Affinity purified Goat anti-SA2 antibody (A300-159A lot 3) used for IP at 6 µg per reaction. SA2 was also immunoprecipitated by a previous lot of this antibody (A300-159A lot 2) and a second antibody against a different epitope of SA2 (A302-580A). For blotting immunoprecipitated SA2, A300-159A was used at 0.4 µg/ml. *Detection:* Chemiluminescence with an exposure time of 10 seconds.



Localization of human SA2. *Sample:* HeLa cells that were extracted for 5 min. at 4C in 0.5% Triton in CSK buffer. *Antibody:* Affinity purified goat anti-SA2 (BL147G; Cat. No. A300-159A) used at 1 µg/ml.