



SZABO SCANDIC

Part of Europa Biosite

Produktinformation



Forschungsprodukte & Biochemikalien



Zellkultur & Verbrauchsmaterial



Diagnostik & molekulare Diagnostik



Laborgeräte & Service

Weitere Information auf den folgenden Seiten!
See the following pages for more information!



Lieferung & Zahlungsart

siehe unsere [Liefer- und Versandbedingungen](#)

Zuschläge

- Mindermengenzuschlag
- Trockeneiszuschlag
- Gefahrgutzuschlag
- Expressversand

SZABO-SCANDIC HandelsgmbH

Quellenstraße 110, A-1100 Wien

T. +43(0)1 489 3961-0

F. +43(0)1 489 3961-7

mail@szabo-scandic.com

www.szabo-scandic.com

[linkedin.com/company/szaboscandic](https://www.linkedin.com/company/szaboscandic) 

Chk1 Antibody

Goat Polyclonal

Antigen Affinity Purified

Protein ID NP_001265.1

Catalog No. A300-161A-T

GeneID 1111

Lot No. A300-161A-T-1

APPLICATIONS	WB
SPECIES REACTIVITY	Human
PRESUMED REACTIVITY	Based on 100% sequence identity, this antibody is predicted to react with Mouse and Rat
AMOUNT	10 µl
CONCENTRATION	1000 µg/ml
STORAGE/SHELF LIFE	2 – 8°C / 1 year from date of receipt
PHYSICAL STATE	Liquid
BUFFER	Tris-citrate/phosphate buffer, pH 7 to 8 containing 0.09% Sodium Azide
ISOTYPE	IgG
ORIGIN	USA
PRODUCTION PROCEDURES	Antibody was affinity purified using an epitope specific to Chk1 immobilized on solid support.

The epitope recognized by A300-161A-T maps to a region between residues 200 and 250 of human Checkpoint Kinase 1 using the numbering given in entry NP_001265.1 (GeneID 1111).

APPLICATIONS Centrifuge tube to remove product from lid. Optimal working dilutions should be determined experimentally by the investigator. Prepare working dilution immediately before use.

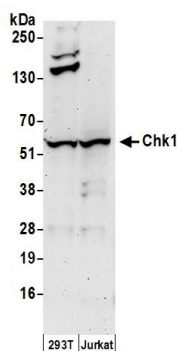
Western Blot 1:2,500 – 1:15,000

Immunoprecipitation Not recommended

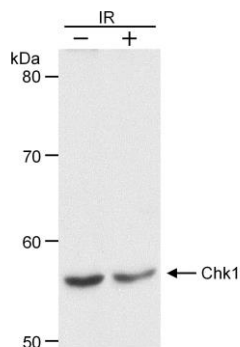
ADDITIONAL INFO <https://www.bethyl.com/product/A300-161A-T>

Use the link above to view SDS, a current list of citations, and other product specific information.

This document certifies that this product has met all of the quality control standards defined by Bethyl Laboratories, Inc.
Michael Spencer, PhD Date: June 6, 2022



Detection of human Chk1 by western blot. *Samples:* Whole cell lysate (50 µg) from HEK293T and Jurkat cells prepared using NETN lysis buffer. *Antibody:* Affinity purified goat anti-Chk1 antibody A300-161A (lot A300-161A-1) used for WB at 0.4 µg/ml. *Detection:* Chemiluminescence with an exposure time of 3 minutes.



Detection of human Chk1 by western blot. *Samples:* Whole cell lysate (30 µg) from HeLa cells treated with 10 Gy ionizing radiation (IR) or untreated. *Antibody:* Affinity purified goat anti-Chk1 (Cat. No. A300-161A) used at 0.1 µg/ml. *Detection:* Chemiluminescence with 30 second exposure.