



SZABO SCANDIC

Part of Europa Biosite

Produktinformation



Forschungsprodukte & Biochemikalien



Zellkultur & Verbrauchsmaterial



Diagnostik & molekulare Diagnostik



Laborgeräte & Service

Weitere Information auf den folgenden Seiten!
See the following pages for more information!



Lieferung & Zahlungsart

siehe unsere [Liefer- und Versandbedingungen](#)

Zuschläge

- Mindermengenzuschlag
- Trockeneiszuschlag
- Gefahrgutzuschlag
- Expressversand

SZABO-SCANDIC Handels GmbH

Quellenstraße 110, A-1100 Wien

T. +43(0)1 489 3961-0

F. +43(0)1 489 3961-7

mail@szabo-scandic.com

www.szabo-scandic.com

[linkedin.com/company/szaboscandic](https://www.linkedin.com/company/szaboscandic)



BID Antibody

Rabbit Polyclonal

Antigen Affinity Purified

Protein ID NP_932070.1

Catalog No. A300-167A

GeneID 637

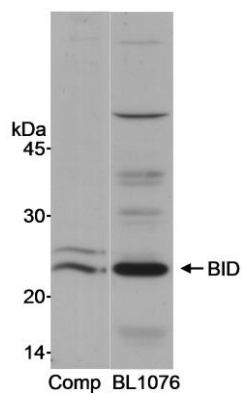
Lot No. A300-167A-1



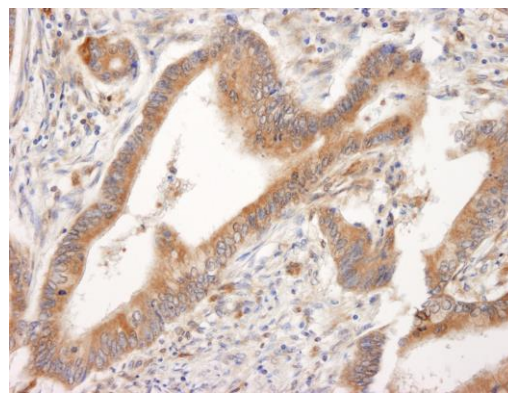
| | |
|-----------------------|---|
| APPLICATIONS | WB, IHC |
| SPECIES REACTIVITY | Human |
| AMOUNT | 100 µl |
| CONCENTRATION | 1000 µg/ml |
| STORAGE/SHELF LIFE | 2 – 8° C / 1 year from date of receipt |
| PHYSICAL STATE | Liquid |
| BUFFER | Tris-citrate/phosphate buffer, pH 7 to 8 containing 0.09% Sodium Azide |
| ISOTYPE | IgG |
| ORIGIN | USA |
| PRODUCTION PROCEDURES | <p>Antibody was affinity purified using an epitope specific to human BID immobilized on solid support.</p> <p>The epitope recognized by A300-167A maps to a region between residues 60 and 120 of human BH3 interacting domain death agonist using the number given in entry NP_932070.1 (GeneID 637). The epitope is found in isoforms 1 and 2 (but not isoform 3) of human BID.</p> <p>Immunoglobulin concentration was determined by extinction coefficient: absorbance at 280 nm of 1.4 equals 1.0 mg of IgG.</p> |
| APPLICATIONS | <p>Centrifuge tube to remove product from lid. Optimal working dilutions should be determined experimentally by the investigator. Prepare working dilution immediately before use.</p> <p>Western Blot 1:1,000 – 1:10,000</p> <p>Immunohistochemistry 1:500 – 1:2,000. Epitope retrieval with citrate buffer pH 6.0 is recommended for FFPE tissue sections.</p> |
| APPLICATION NOTES | Western blot of lysates performed using standard western blot reagents and 4–20% SDS-PAGE. |
| ADDITIONAL INFO | <p>https://www.bethyl.com/product/A300-167A</p> <p>Use the link above to view SDS, a current list of citations, and other product specific information.</p> |

This document certifies that this product has met all of the quality control standards defined by Bethyl Laboratories, Inc.
Eric McIntush, PhD | Chief Scientific Officer

Date: June 21, 2019



Detection of human BID by western blot. *Sample:* Whole cell lysate (40 µg) from HeLa cells. *Antibodies:* Affinity purified rabbit anti-BID antibody (Cat. No. A300-167A) or rabbit anti-BID from another commercial source (Comp). Both antibodies were used for WB at 1 µg/ml. *Detection:* Chemiluminescence.



Detection of human BID by immunohistochemistry. *Sample:* FFPE section of human colon carcinoma. *Antibody:* Affinity purified rabbit anti-BID (Cat. No. A300-167A) used at a dilution of 1:1,000 (1 µg/ml). *Detection:* DAB