



SZABO SCANDIC

Part of Europa Biosite

Produktinformation



Forschungsprodukte & Biochemikalien



Zellkultur & Verbrauchsmaterial



Diagnostik & molekulare Diagnostik



Laborgeräte & Service

Weitere Information auf den folgenden Seiten!
See the following pages for more information!



Lieferung & Zahlungsart

siehe unsere [Liefer- und Versandbedingungen](#)

Zuschläge

- Mindermengenzuschlag
- Trockeneiszuschlag
- Gefahrgutzuschlag
- Expressversand

SZABO-SCANDIC Handels GmbH

Quellenstraße 110, A-1100 Wien

T. +43(0)1 489 3961-0

F. +43(0)1 489 3961-7

mail@szabo-scandic.com

www.szabo-scandic.com

[linkedin.com/company/szaboscandic](https://www.linkedin.com/company/szaboscandic)



Parafibromin Antibody

Rabbit Polyclonal

Antigen Affinity Purified

Protein ID Q6P1J9

Catalog No. A300-170A-T

GenelD 79577

Lot No. A300-170A-T-2

APPLICATIONS WB, IP

SPECIES REACTIVITY Human, Mouse

PRESUMED REACTIVITY Based on 100% sequence identity, this antibody is predicted to react with Rat

AMOUNT 10 µl

CONCENTRATION 1000 µg/ml

STORAGE/SHELF LIFE 2 – 8°C / 1 year from date of receipt

PHYSICAL STATE Liquid

BUFFER Tris-citrate/phosphate buffer, pH 7 to 8 containing 0.09% Sodium Azide

ISOTYPE IgG

ORIGIN USA

PRODUCTION PROCEDURES Antibody was affinity purified using an epitope specific to Parafibromin immobilized on solid support.

The epitope recognized by A300-170A-T maps to a region between residues 250 and 300 of human Parafibromin using the numbering given in TrEMBL entry Q6P1J9 (GenelD 79577).

APPLICATIONS Centrifuge tube to remove product from lid. Optimal working dilutions should be determined experimentally by the investigator. Prepare working dilution immediately before use.

Western Blot 1:5,000 – 1:20,000

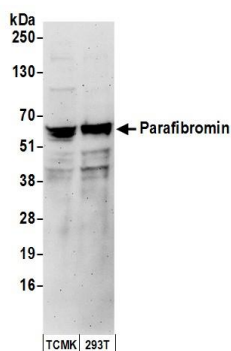
Immunoprecipitation 1 – 4 µg/mg lysate

ADDITIONAL INFO <https://www.bethyl.com/product/A300-170A-T>

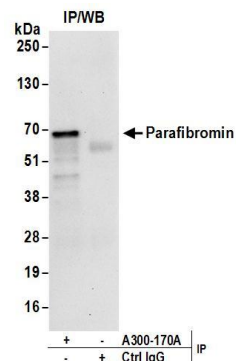
Use the link above to view SDS, a current list of citations, and other product specific information.

IP-western blot protocol: https://www.bethyl.com/content/protocol_IP_WB

This document certifies that this product has met all of the quality control standards defined by Bethyl Laboratories, Inc.
Michael Spencer, PhD Date: June 6, 2022



Detection of human and mouse Para fibromin by western blot. *Samples:* Whole cell lysate (50 µg) from mouse TCMK-1 and human HEK293T cells. *Antibodies:* Affinity purified rabbit anti-Parafibromin antibody A300-170A (lot A300-170A-2) used for WB at 0.04 µg/ml. *Detection:* Chemiluminescence with an exposure time of 3 minutes.



Detection of human Parafibromin by western blot of immunoprecipitates. *Samples:* Whole cell lysate (1 mg for IP; 20% of IP loaded) from HEK293T cells. *Antibodies:* Affinity purified rabbit anti-Parafibromin antibody A300-170A (lot A300-170A-2) used for IP at 6 µg/mg lysate. For blotting immunoprecipitated Parafibromin, A300-170A was used at 0.04 µg/ml. *Detection:* Chemiluminescence with an exposure time of 30 seconds.