



SZABO SCANDIC

Part of Europa Biosite

Produktinformation



Forschungsprodukte & Biochemikalien



Zellkultur & Verbrauchsmaterial



Diagnostik & molekulare Diagnostik



Laborgeräte & Service

Weitere Information auf den folgenden Seiten!
See the following pages for more information!



Lieferung & Zahlungsart

siehe unsere [Liefer- und Versandbedingungen](#)

Zuschläge

- Mindermengenzuschlag
- Trockeneiszuschlag
- Gefahrgutzuschlag
- Expressversand

SZABO-SCANDIC HandelsgmbH

Quellenstraße 110, A-1100 Wien

T. +43(0)1 489 3961-0

F. +43(0)1 489 3961-7

mail@szabo-scandic.com

www.szabo-scandic.com

[linkedin.com/company/szaboscandic](https://www.linkedin.com/company/szaboscandic) 

QKI Antibody

Rabbit Polyclonal

Antigen Affinity Purified

Protein ID AAH19917.1

Catalog No. A300-183A

GeneID 9444

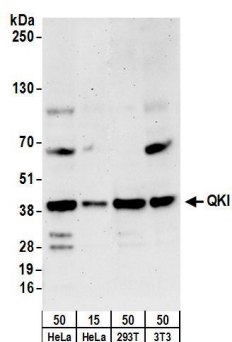
Lot No. A300-183A-2



APPLICATIONS	WB, IP, IHC						
SPECIES REACTIVITY	Human, Mouse						
PRESUMED REACTIVITY	Based on 100% sequence identity, this antibody is predicted to react with Rat, Zebrafish, X. laevis, Chicken, Bovine, Dog, Horse, Pig and Cat						
AMOUNT	100 µl						
CONCENTRATION	1000 µg/ml						
STORAGE/SHELF LIFE	2 – 8° C / 1 year from date of receipt						
PHYSICAL STATE	Liquid						
BUFFER	Tris-citrate/phosphate buffer, pH 7 to 8 containing 0.09% Sodium Azide						
ISOTYPE	IgG						
ORIGIN	USA						
PRODUCTION PROCEDURES	<p>Antibody was affinity purified using an epitope specific to QKI immobilized on solid support.</p> <p>The epitope recognized by A300-183A maps to the C-terminus of isoform 5 of human quaking homolog according to entry AAH19917.1 (GeneID 9444). The epitope is not found in isoforms 1, 2, 3, 4, 6, 7 or 7B according to TrEMBL entries Q9P0Y1, Q9P0Y0, Q9P0X6, Q9P0X8, Q96PU7, Q969L9 and Q96PU6, respectively.</p> <p>Immunoglobulin concentration was determined by extinction coefficient: absorbance at 280 nm of 1.4 equals 1.0 mg of IgG.</p>						
APPLICATIONS	<p>Centrifuge tube to remove product from lid. Optimal working dilutions should be determined experimentally by the investigator. Prepare working dilution immediately before use.</p> <table><tr><td>Western Blot</td><td>1:5,000 – 1:25,000</td></tr><tr><td>Immunoprecipitation</td><td>2 – 10 µg/mg lysate</td></tr><tr><td>Immunohistochemistry</td><td>1:500 – 1:2,000. Epitope retrieval with Tris-EDTA pH 9.0 is recommended for FFPE tissue sections.</td></tr></table>	Western Blot	1:5,000 – 1:25,000	Immunoprecipitation	2 – 10 µg/mg lysate	Immunohistochemistry	1:500 – 1:2,000. Epitope retrieval with Tris-EDTA pH 9.0 is recommended for FFPE tissue sections.
Western Blot	1:5,000 – 1:25,000						
Immunoprecipitation	2 – 10 µg/mg lysate						
Immunohistochemistry	1:500 – 1:2,000. Epitope retrieval with Tris-EDTA pH 9.0 is recommended for FFPE tissue sections.						
APPLICATION NOTES	<p>Western blot of immunoprecipitates performed using Normal Pig Serum (Cat. No. S100-020), Goat anti-Rabbit Light Chain HRP Conjugate (Cat. No. A120-113P) and 4-20% SDS-PAGE (link to IP-western blot protocol in Additional Info section below).</p> <p>Western blot of lysates performed using standard western blot reagents and 4-20% SDS-PAGE.</p>						
IHC HUMAN CONTROLS	Breast Carcinoma, Testicular Seminoma						
IHC MOUSE CONTROLS	Renal Cell Carcinoma						
ADDITIONAL INFO	<p>https://www.bethyl.com/product/A300-183A</p> <p>Use the link above to view SDS, a current list of citations, and other product specific information.</p> <p>IP-western blot protocol: https://www.bethyl.com/content/protocol_IP_WB</p>						

This document certifies that this product has met all of the quality control standards defined by Bethyl Laboratories, Inc.
Eric McIntush, PhD | Chief Scientific Officer

Date: June 21, 2019

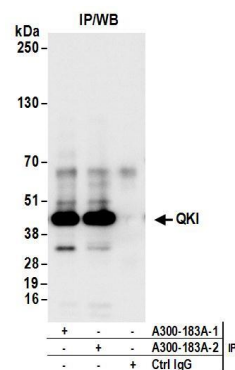


Detection of human and mouse QKI by western blot.

Samples: Whole cell lysate from HeLa (15 and 50 µg), HEK293T (50µg), and mouse NIH 3T3 (50µg) cells.

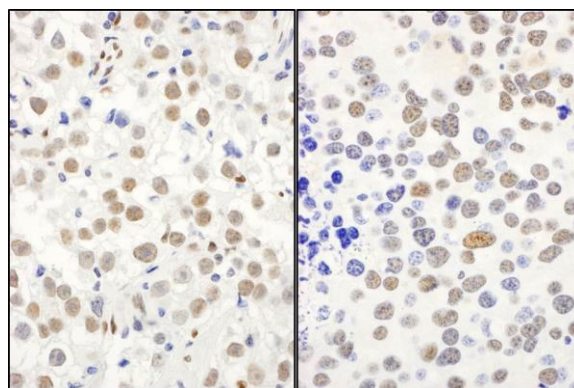
Antibodies: Affinity purified rabbit anti-QKI antibody A300-183A (lot A300-183A-2) used for WB at 0.04 µg/ml.

Detection: Chemiluminescence with an exposure time of 3 minutes.



Detection of human QKI by western blot of immunoprecipitates.

Samples: Whole cell lysate (1 mg for IP; 20% of IP loaded) from HeLa cells. **Antibodies:** Affinity purified rabbit anti-QKI antibody A300-183A (lot A300-183A-2) used for IP at 6 µg/mg lysate. QKI was also immunoprecipitated by a prior lot (A300-183A-1) of this antibody. For blotting immunoprecipitated QKI, A300-183A was used at 1 µg/ml. **Detection:** Chemiluminescence with an exposure time of 10 seconds.



Detection of human and mouse QKI by immunohistochemistry.

Sample: FFPE sections of human testicular seminoma (left) and mouse renal cell carcinoma (right). **Antibody:** Affinity purified rabbit anti-QKI (Cat. No. A300-183A Lot2) used at a dilution of 1:1,000 (1 µg/ml).

Detection: DAB