



SZABO SCANDIC

Part of Europa Biosite

Produktinformation



Forschungsprodukte & Biochemikalien



Zellkultur & Verbrauchsmaterial



Diagnostik & molekulare Diagnostik



Laborgeräte & Service

Weitere Information auf den folgenden Seiten!
See the following pages for more information!



Lieferung & Zahlungsart

siehe unsere [Liefer- und Versandbedingungen](#)

Zuschläge

- Mindermengenzuschlag
- Trockeneiszuschlag
- Gefahrgutzuschlag
- Expressversand

SZABO-SCANDIC Handels GmbH

Quellenstraße 110, A-1100 Wien

T. +43(0)1 489 3961-0

F. +43(0)1 489 3961-7

mail@szabo-scandic.com

www.szabo-scandic.com

[linkedin.com/company/szaboscandic](https://www.linkedin.com/company/szaboscandic) 

Rad50 Antibody

Rabbit Polyclonal

Antigen Affinity Purified

Protein ID NP_005723.2

Catalog No. A300-185A-T

GeneID 10111

Lot No. A300-185A-T-1

APPLICATIONS WB, IHC

SPECIES REACTIVITY Human

AMOUNT 10 µl

CONCENTRATION 1000 µg/ml

STORAGE/SHELF LIFE 2 – 8°C / 1 year from date of receipt

PHYSICAL STATE Liquid

BUFFER Tris-citrate/phosphate buffer, pH 7 to 8 containing 0.09% Sodium Azide

ISOTYPE IgG

ORIGIN USA

PRODUCTION PROCEDURES Antibody was affinity purified using an epitope specific to Rad50 immobilized on solid support.

The epitope recognized by A300-185A-T maps to a region between residues 700 and 750 of human Rad50 using the numbering given in entry NP_005723.2 (GeneID 10111).

Immunoglobulin concentration was determined by extinction coefficient: absorbance at 280 nm of 1.4 equals 1.0 mg of IgG.

APPLICATIONS Centrifuge tube to remove product from lid. Optimal working dilutions should be determined experimentally by the investigator. Prepare working dilution immediately before use.

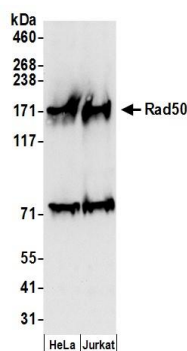
Western Blot 1:1,000 – 1:5,000

Immunohistochemistry 1:500 – 1:2,000. Epitope retrieval with citrate buffer pH 6.0 is recommended for FFPE tissue sections.

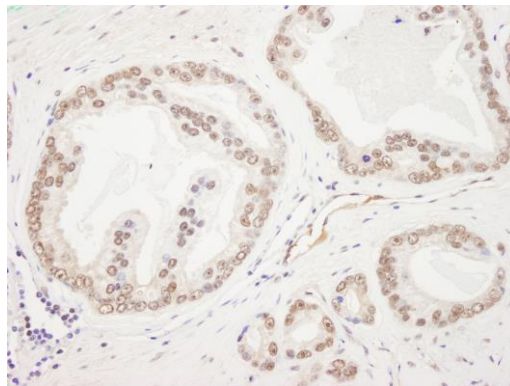
ADDITIONAL INFO <https://www.bethyl.com/product/A300-185A-T>

Use the link above to view SDS, a current list of citations, and other product specific information.
IP-western blot protocol: https://www.bethyl.com/content/protocol_IP_WB

This document certifies that this product has met all of the quality control standards defined by Bethyl Laboratories, Inc.
Michael Spencer, PhD Date: June 6, 2022



Detection of human Rad50 by western blot. *Samples:* Whole cell lysate (50 μ g) from HeLa and Jurkat cells prepared using NETN lysis buffer. *Antibody:* Affinity purified rabbit anti-Rad50 antibody A300-185A (lot A300-185A-1) used for WB at 0.2 μ g/ml. *Detection:* Chemiluminescence with an exposure time of 3 seconds.



Detection of human Rad50 by immunohistochemistry. *Sample:* FFPE section of human prostate carcinoma. *Antibody:* Affinity purified rabbit anti-Rad50 (Cat. No. A300-185A Lot1) used at a dilution of 1:1,000 (1 μ g/ml). *Detection:* DAB