



SZABO SCANDIC

Part of Europa Biosite

Produktinformation



Forschungsprodukte & Biochemikalien



Zellkultur & Verbrauchsmaterial



Diagnostik & molekulare Diagnostik



Laborgeräte & Service

Weitere Information auf den folgenden Seiten!
See the following pages for more information!



Lieferung & Zahlungsart

siehe unsere [Liefer- und Versandbedingungen](#)

Zuschläge

- Mindermengenzuschlag
- Trockeneiszuschlag
- Gefahrgutzuschlag
- Expressversand

SZABO-SCANDIC HandelsgmbH

Quellenstraße 110, A-1100 Wien

T. +43(0)1 489 3961-0

F. +43(0)1 489 3961-7

mail@szabo-scandic.com

www.szabo-scandic.com

[linkedin.com/company/szaboscandic](https://www.linkedin.com/company/szaboscandic) 

MCM2 Antibody

Rabbit Polyclonal

Antigen Affinity Purified	RefSeq ID	NP_004511.7.2
Catalog No. A300-191A-T	Uniprot ID	P49736
Lot No. A300-191A-T-3	GeneID	4171

APPLICATIONS	WB, IP, IHC
SPECIES REACTIVITY	Human, Mouse
AMOUNT	10 µl
CONCENTRATION	1000 µg/ml
STORAGE/SHELF LIFE	2 – 8°C / 1 year from date of receipt
PHYSICAL STATE	Liquid
BUFFER	Tris-citrate/phosphate buffer, pH 7 to 8 containing 0.09% Sodium Azide
ISOTYPE	IgG
ORIGIN	USA
PRODUCTION PROCEDURES	Antibody was affinity purified using an epitope specific to MCM2 immobilized on solid support.

The epitope recognized by A300-191A-T maps to a region between residues 1 and 50 of human human minichromosomal maintenance deficient 2 using the numbering given in entry NP_004511.7.2 (GeneID 4171).

Immunoglobulin concentration was determined by extinction coefficient: absorbance at 280 nm of 1.4 equals 1.0 mg of IgG.

APPLICATIONS Centrifuge tube to remove product from lid. Optimal working dilutions should be determined experimentally by the investigator. Prepare working dilution immediately before use.

Western Blot 1:1,000 – 1:10,000

Immunoprecipitation 2 – 10 µg/mg lysate

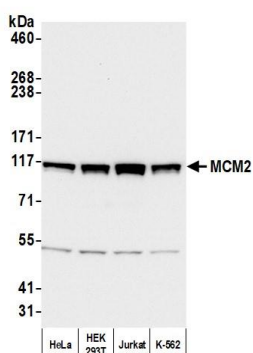
Immunohistochemistry 1:2,000 to 1:10,000. Epitope retrieval with citrate buffer pH6.0 is recommended for FFPE tissue sections.

IHC HUMAN CONTROLS Breast Carcinoma, Colon Carcinoma, Ovarian Carcinoma, Small Cell Lung Cancer

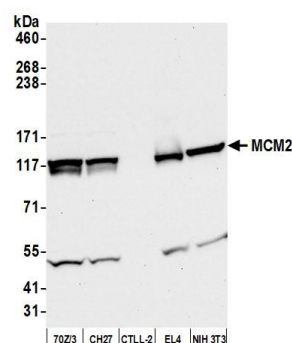
ADDITIONAL INFO <https://www.fortislifesciences.com/p/A300-191A-T>

Use the link above to view SDS, a current list of citations, and other product specific information.

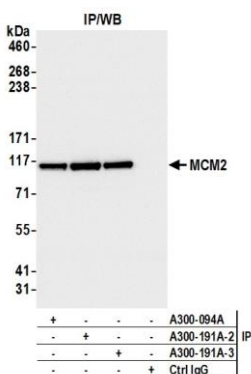
This document certifies that this product has met all of the quality control standards defined by Bethyl Laboratories, Inc.
Michael Spencer, PhD Date: January 24, 2023



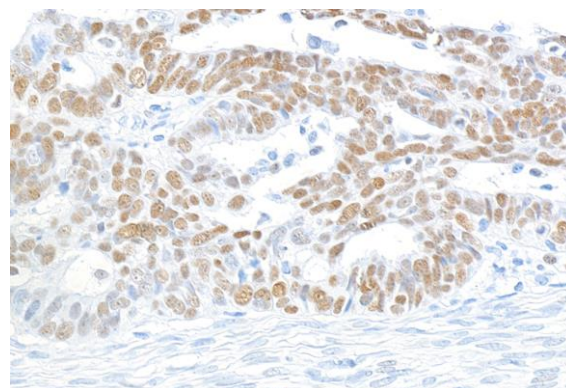
Detection of human MCM2 by western blot. *Samples:* Whole cell lysate (10 µg) from HeLa, HEK293T, Jurkat, and K-562 cells prepared using NETN lysis buffer. *Antibody:* Affinity purified rabbit anti-MCM2 antibody (A300-191A lot 3) used for WB at 0.1 µg/ml. *Detection:* Chemiluminescence with an exposure time of 3 seconds.



Detection of mouse MCM2 by western blot. *Samples:* Whole cell lysate (50 µg) from 70Z/3, CH27, CTLL-2, EL4, and NIH 3T3 cells prepared using NETN lysis buffer. *Antibody:* Affinity purified rabbit anti-MCM2 antibody (A300-191A lot 3) used for WB at 0.1 µg/ml. *Detection:* Chemiluminescence with an exposure time of 10 seconds.



Detection of human MCM2 by western blot of immunoprecipitates. *Samples:* Whole cell lysate (1.0 mg per IP reaction; 20% of IP loaded) from HEK293T cells prepared using NETN lysis buffer. *Antibodies:* Affinity purified rabbit anti-MCM2 antibody (A300-191A lot 3) used for IP at 6 µg per reaction. MCM2 was also immunoprecipitated by a previous lot of this antibody (A300-191A lot 2) and rabbit anti-Phospho MCM2 (S108) (A300-094A). For blotting immunoprecipitated MCM2, A300-191A was used at 0.1 µg/ml. *Detection:* Chemiluminescence with an exposure time of 1 second.



Detection of human MCM2 by immunohistochemistry. *Sample:* FFPE section of human ovarian cancer. *Antibody:* Affinity purified rabbit anti-MCM2 (A300-191A Lot 3) used at a dilution of 1:5,000 (0.2µg/ml). *Detection:* DAB