



# SZABO SCANDIC

Part of Europa Biosite

## Produktinformation



Forschungsprodukte & Biochemikalien



Zellkultur & Verbrauchsmaterial



Diagnostik & molekulare Diagnostik



Laborgeräte & Service

Weitere Information auf den folgenden Seiten!  
See the following pages for more information!



### Lieferung & Zahlungsart

siehe unsere [Liefer- und Versandbedingungen](#)

### Zuschläge

- Mindermengenzuschlag
- Trockeneiszuschlag
- Gefahrgutzuschlag
- Expressversand

### SZABO-SCANDIC Handels GmbH

Quellenstraße 110, A-1100 Wien

T. +43(0)1 489 3961-0

F. +43(0)1 489 3961-7

[mail@szabo-scandic.com](mailto:mail@szabo-scandic.com)

[www.szabo-scandic.com](http://www.szabo-scandic.com)

[linkedin.com/company/szaboscandic](https://www.linkedin.com/company/szaboscandic)



# CKII alpha Antibody

Rabbit Polyclonal

Antigen Affinity Purified

Protein ID NP\_001886.1

Catalog No. A300-198A-T

GeneID 1457

Lot No. A300-198A-T-2

<b>APPLICATIONS</b>	WB, IP, IHC
<b>SPECIES REACTIVITY</b>	Human, Mouse
<b>PRESUMED REACTIVITY</b>	Based on 100% sequence identity, this antibody is predicted to react with Rat, Bovine and Rabbit
<b>AMOUNT</b>	10 µl
<b>CONCENTRATION</b>	1000 µg/ml
<b>STORAGE/SHELF LIFE</b>	2 – 8°C / 1 year from date of receipt
<b>PHYSICAL STATE</b>	Liquid
<b>BUFFER</b>	Tris-citrate/phosphate buffer, pH 7 to 8 containing 0.09% Sodium Azide
<b>ISOTYPE</b>	IgG
<b>ORIGIN</b>	USA
<b>PRODUCTION PROCEDURES</b>	Antibody was affinity purified using an epitope specific to CKII alpha immobilized on solid support.

The epitope recognized by A300-198A-T maps to a region between residue 350 and the C-terminus (residue 391) of human Casein Kinase 2, alpha 1 using the numbering given in entry NP\_001886.1 (GeneID 1457).

**APPLICATIONS** Centrifuge tube to remove product from lid. Optimal working dilutions should be determined experimentally by the investigator. Prepare working dilution immediately before use.

Western Blot 1:2,000 – 1:10,000

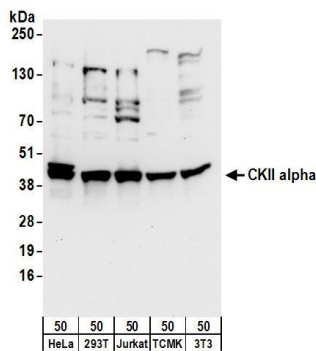
Immunoprecipitation 2 – 10 µg/mg lysate

Immunohistochemistry 1:2,000 – 1:10,000. Epitope retrieval with citrate buffer pH 6.0 or Tris-EDTA pH 9.0 is recommended for FFPE tissue sections.

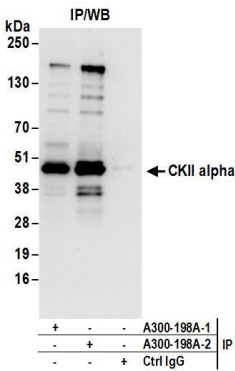
**ADDITIONAL INFO** <https://www.bethyl.com/product/A300-198A-T>

Use the link above to view SDS, a current list of citations, and other product specific information.  
IP-western blot protocol: [https://www.bethyl.com/content/protocol\\_IP\\_WB](https://www.bethyl.com/content/protocol_IP_WB)

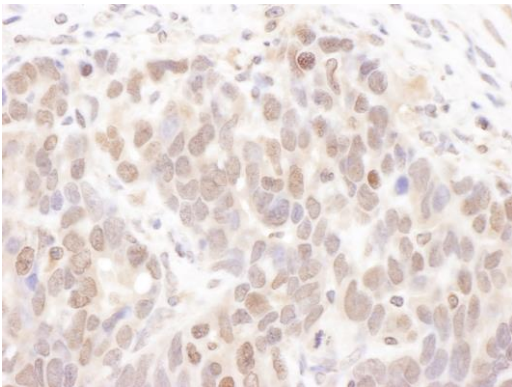
This document certifies that this product has met all of the quality control standards defined by Bethyl Laboratories, Inc.  
Michael Spencer, PhD Date: June 6, 2022



**Detection of human and mouse CKII alpha by western blot.** *Samples:* Whole cell lysate (50 µg) from HeLa, HEK293T, Jurkat, mouse TCMK-1, and mouse NIH 3T3 cells. *Antibodies:* Affinity purified rabbit anti-CKII alpha antibody A300-198A (lot A300-198A-2) used for WB at 0.1 µg/ml. *Detection:* Chemiluminescence with an exposure time of 10 seconds.



**Detection of human CKII alpha by western blot of immunoprecipitates.** *Samples:* Whole cell lysate (1 mg for IP; 20% of IP loaded) from HeLa cells. *Antibodies:* Affinity purified rabbit anti-CKII alpha antibody A300-198A (lot A300-198A-2) used for IP at 6 µg/mg lysate. CKII alpha was also immunoprecipitated by a previous lot (lot A300-198A-1) of this antibody. For blotting immunoprecipitated CKII alpha, A300-198A was used at 1 µg/ml. *Detection:* Chemiluminescence with an exposure time of 3 seconds.



**Detection of human CKII Alpha by immunohistochemistry.** *Sample:* FFPE section of human ovarian carcinoma. *Antibody:* Affinity purified rabbit anti-CKII Alpha (Cat. No. A300-198A Lot2) used at a dilution of 1:5,000 (0.2µg/ml). *Detection:* DAB