



SZABO SCANDIC

Part of Europa Biosite

Produktinformation



Forschungsprodukte & Biochemikalien



Zellkultur & Verbrauchsmaterial



Diagnostik & molekulare Diagnostik



Laborgeräte & Service

Weitere Information auf den folgenden Seiten!
See the following pages for more information!



Lieferung & Zahlungsart

siehe unsere [Liefer- und Versandbedingungen](#)

Zuschläge

- Mindermengenzuschlag
- Trockeneiszuschlag
- Gefahrgutzuschlag
- Expressversand

SZABO-SCANDIC Handels GmbH

Quellenstraße 110, A-1100 Wien

T. +43(0)1 489 3961-0

F. +43(0)1 489 3961-7

mail@szabo-scandic.com

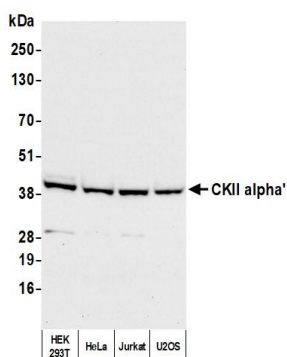
www.szabo-scandic.com

[linkedin.com/company/szaboscandic](https://www.linkedin.com/company/szaboscandic) 

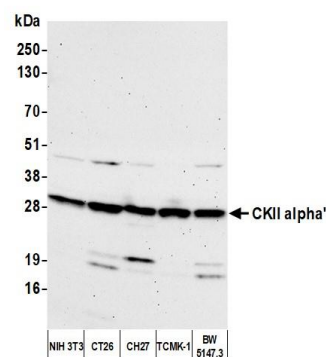
BETHYL | **FORTIS**
LABORATORIES, INC. | LIFE SCIENCES

Antigen Affinity Purified	RefSeq ID	NP_001887.1
Catalog No. A300-199A-T	Uniprot ID	P19784
Lot No. A300-199A-T-6	GenelD	1459

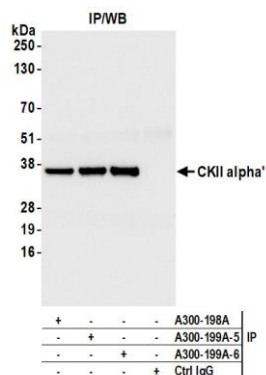
This document certifies that this product has met all of the quality control standards defined by Bethyl Laboratories, Inc.
Michael Spencer, PhD Date: September 15, 2022



Detection of human CKII alpha' by western blot. *Samples:* Whole cell lysate (25 µg) from HEK293T, HeLa, Jurkat, and U2OS cells prepared using NETN lysis buffer. *Antibody:* Affinity purified rabbit anti-CKII alpha' antibody (A300-199A lot 6) used for WB at 0.1 µg/ml. *Detection:* Chemiluminescence with an exposure time of 10 seconds.



Detection of mouse CKII alpha' by western blot. *Samples:* Whole cell lysate (25 µg) from NIH 3T3, CT26, CH27, TCMK-1, and BW5147.3 cells prepared using NETN lysis buffer. *Antibody:* Affinity purified rabbit anti-CKII alpha' antibody (A300-199A lot 6) used for WB at 0.1 µg/ml. *Detection:* Chemiluminescence with an exposure time of 75 seconds.



Detection of human CKII alpha' by western blot of immunoprecipitates. *Samples:* Whole cell lysate (1.0 mg per IP reaction; 20% of IP loaded) from HEK293T cells prepared using NETN lysis buffer. *Antibodies:* Affinity purified rabbit anti-CKII alpha' antibody (A300-199A lot 6) used for IP at 6 µg per reaction. CKII alpha' was also immunoprecipitated by a previous lot of this antibody (A300-199A lot 5) and a second antibody against a different epitope of CKII alpha' (A300-198A). For blotting immunoprecipitated CKII alpha', A300-199A was used at 0.1 µg/ml. *Detection:* Chemiluminescence with an exposure time of 1 second.