



# SZABO SCANDIC

Part of Europa Biosite

## Produktinformation



Forschungsprodukte & Biochemikalien



Zellkultur & Verbrauchsmaterial



Diagnostik & molekulare Diagnostik



Laborgeräte & Service

Weitere Information auf den folgenden Seiten!  
See the following pages for more information!



### Lieferung & Zahlungsart

siehe unsere [Liefer- und Versandbedingungen](#)

### Zuschläge

- Mindermengenzuschlag
- Trockeneiszuschlag
- Gefahrgutzuschlag
- Expressversand

### SZABO-SCANDIC HandelsgmbH

Quellenstraße 110, A-1100 Wien

T. +43(0)1 489 3961-0

F. +43(0)1 489 3961-7

[mail@szabo-scandic.com](mailto:mail@szabo-scandic.com)

[www.szabo-scandic.com](http://www.szabo-scandic.com)

[linkedin.com/company/szaboscandic](https://www.linkedin.com/company/szaboscandic) 

# Pumilio 1 Antibody

Goat Polyclonal

Antigen Affinity Purified

Protein ID NP\_055491.1

Catalog No. A300-201A

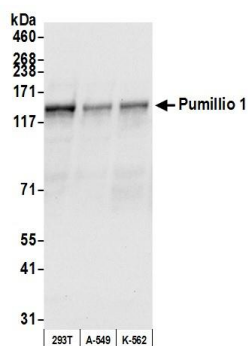
GeneID 9698

Lot No. A300-201A-3

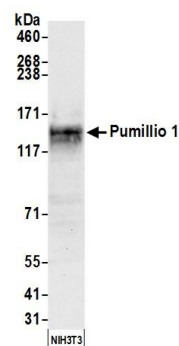


<b>APPLICATIONS</b>	WB, IP
<b>SPECIES REACTIVITY</b>	Human, Mouse
<b>PRESUMED REACTIVITY</b>	Based on 100% sequence identity, this antibody is predicted to react with Orangutan
<b>AMOUNT</b>	100 µl
<b>CONCENTRATION</b>	1000 µg/ml
<b>STORAGE/SHELF LIFE</b>	2 - 8° C / 1 year from date of receipt
<b>PHYSICAL STATE</b>	Liquid
<b>BUFFER</b>	Tris-citrate/phosphate buffer, pH 7 to 8 containing 0.09% Sodium Azide
<b>ISOTYPE</b>	IgG
<b>ORIGIN</b>	USA
<b>PRODUCTION PROCEDURES</b>	<p>Antibody was affinity purified using an epitope specific to Pumilio immobilized on solid support.</p> <p>The epitope recognized by A300-201A maps to a region between residues 225 and 275 of human Pumilio 1 using the numbering given in entry NP_055491.1 (GeneID 9698).</p> <p>Immunoglobulin concentration was determined by extinction coefficient: absorbance at 280 nm of 1.4 equals 1.0 mg of IgG.</p>
<b>APPLICATIONS</b>	<p>Centrifuge tube to remove product from lid. Optimal working dilutions should be determined experimentally by the investigator. Prepare working dilution immediately before use.</p> <p>Western Blot                      1:2,000 - 1:10,000</p> <p>Immunoprecipitation            2 - 10 µg/mg lysate</p>
<b>APPLICATION NOTES</b>	Western blot of lysates performed using standard western blot reagents and 4-8% SDS-PAGE.
<b>ADDITIONAL INFO</b>	<p><a href="https://www.bethyl.com/product/A300-201A">https://www.bethyl.com/product/A300-201A</a></p> <p>Use the link above to view SDS, a current list of citations, and other product specific information.</p>

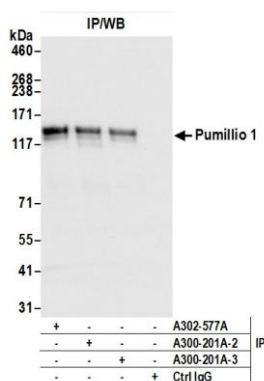
This document certifies that this product has met all of the quality control standards defined by Bethyl Laboratories, Inc.  
Eric McIntush, PhD | Chief Scientific Officer Date: June 21, 2019



**Detection of human Pumilio 1 by western blot.** *Samples:* Whole cell lysate (50 µg) from HEK293T, A-549, and K-562 cells prepared using NETN lysis buffer. *Antibody:* Affinity purified goat anti-Pumillio 1 antibody A300-201A (lot A300-201A-3) used for WB at 0.1 µg/ml. *Secondary:* HRP-conjugated rabbit anti-goat IgG (A50-100P). Chemiluminescence with an exposure time of 10 seconds.



**Detection of mouse Pumilio 1 by western blot.** *Samples:* Whole cell lysate (50 µg) from NIH 3T3 cells prepared using NETN lysis buffer. *Antibody:* Affinity purified goat anti-Pumillio 1 antibody A300-201A (lot A300-201A-3) used for WB at 0.1 µg/ml. *Secondary:* HRP-conjugated rabbit anti-goat IgG (A50-100P). Chemiluminescence with an exposure time of 10 seconds.



**Detection of human Pumilio 1 by western blot of immunoprecipitates.** *Samples:* Whole cell lysate (1.0 mg per IP reaction; 20% of IP loaded) from HEK293T cells prepared using NETN lysis buffer. *Antibodies:* Affinity purified goat anti-Pumillio 1 antibody A300-201A (lot A300-201A-3) used for IP at 6 µg per reaction. Pumillio 1 was also immunoprecipitated by a previous lot of this antibody (lot A300-201A-2) and rabbit anti-Pumillio 1 antibody A302-577A. For blotting immunoprecipitated Pumillio 1, A300-201A was used at 0.1 µg/ml. Chemiluminescence with an exposure time of 3 seconds.