



SZABO SCANDIC

Part of Europa Biosite

Produktinformation



Forschungsprodukte & Biochemikalien



Zellkultur & Verbrauchsmaterial



Diagnostik & molekulare Diagnostik



Laborgeräte & Service

Weitere Information auf den folgenden Seiten!
See the following pages for more information!



Lieferung & Zahlungsart

siehe unsere [Liefer- und Versandbedingungen](#)

Zuschläge

- Mindermengenzuschlag
- Trockeneiszuschlag
- Gefahrgutzuschlag
- Expressversand

SZABO-SCANDIC HandelsgmbH

Quellenstraße 110, A-1100 Wien

T. +43(0)1 489 3961-0

F. +43(0)1 489 3961-7

mail@szabo-scandic.com

www.szabo-scandic.com

[linkedin.com/company/szaboscandic](https://www.linkedin.com/company/szaboscandic) 

Phospho WASP (S483/S484) Antibody

Rabbit Polyclonal

Antigen Affinity Purified Protein ID NP_000368.1

Catalog No. A300-205A-T GeneID 7454

Lot No. A300-205A-T-2

APPLICATIONS	WB
SPECIES REACTIVITY	Human
AMOUNT	10 µl
CONCENTRATION	1000 µg/ml
STORAGE/SHELF LIFE	2 – 8°C / 1 year from date of receipt
PHYSICAL STATE	Liquid
BUFFER	Tris-citrate/phosphate buffer, pH 7 to 8 containing 0.09% Sodium Azide
ISOTYPE	IgG
ORIGIN	USA
PRODUCTION PROCEDURES	<p>Antibody was affinity purified using a phosphorylated epitope corresponding to phosphorylation at Serine 483 and Serine 484 of WASP immobilized on solid support.</p> <p>The epitope recognized by A300-205A-T is phosphorylated Serine 483, phosphorylated Serine 484 and surrounding residues of human Wiskott-Aldrich syndrome using the numbering given in entry NP_000368.1 (GeneID 7454).</p> <p>Immunoglobulin concentration was determined by extinction coefficient: absorbance at 280 nm of 1.4 equals 1.0 mg of IgG.</p>

APPLICATIONS Centrifuge tube to remove product from lid. Optimal working dilutions should be determined experimentally by the investigator. Prepare working dilution immediately before use.

Western Blot 1:1,000 – 1:10,000

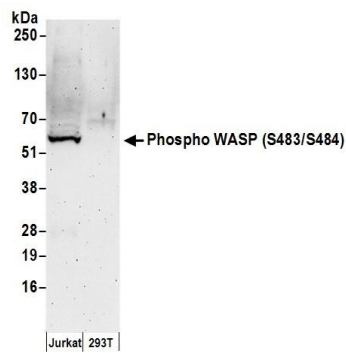
ADDITIONAL INFO <https://www.bethyl.com/product/A300-205A-T>

Use the link above to view SDS, a current list of citations, and other product specific information.

This document certifies that this product has met all of the quality control standards defined by Bethyl Laboratories, Inc.

Michael Spencer, PhD

Date: June 6, 2022



Detection of human Phospho WASP (S483/S484) by western blot. *Samples:* Whole cell lysate (50 µg) from Jurkat and HEK293T cells prepared using NETN lysis buffer. *Antibody:* Affinity purified rabbit anti-Phospho WASP (S483/S484) antibody A300-205A (lot A300-205A-2) used for WB at 0.1 µg/ml. *Detection:* Chemiluminescence with an exposure time of 3 minutes.