



SZABO SCANDIC

Part of Europa Biosite

Produktinformation



Forschungsprodukte & Biochemikalien



Zellkultur & Verbrauchsmaterial



Diagnostik & molekulare Diagnostik



Laborgeräte & Service

Weitere Information auf den folgenden Seiten!
See the following pages for more information!



Lieferung & Zahlungsart

siehe unsere [Liefer- und Versandbedingungen](#)

Zuschläge

- Mindermengenzuschlag
- Trockeneiszuschlag
- Gefahrgutzuschlag
- Expressversand

SZABO-SCANDIC Handels GmbH

Quellenstraße 110, A-1100 Wien

T. +43(0)1 489 3961-0

F. +43(0)1 489 3961-7

mail@szabo-scandic.com

www.szabo-scandic.com

[linkedin.com/company/szaboscandic](https://www.linkedin.com/company/szaboscandic) 

BHC110/LSD1 Antibody

Rabbit Polyclonal

Antigen Affinity Purified Protein ID O60341

Catalog No. A300-216A-T GeneID 23028

Lot No. A300-216A-T-1

APPLICATIONS	WB, IHC
SPECIES REACTIVITY	Human
PRESUMED REACTIVITY	Based on 100% sequence identity, this antibody is predicted to react with Mouse
AMOUNT	10 µl
CONCENTRATION	1000 µg/ml
STORAGE/SHELF LIFE	2 – 8°C / 1 year from date of receipt
PHYSICAL STATE	Liquid
BUFFER	Tris-citrate/phosphate buffer, pH 7 to 8 containing 0.09% Sodium Azide
ISOTYPE	IgG
ORIGIN	USA
PRODUCTION PROCEDURES	Antibody was affinity purified using an epitope specific to BHC110/LSD1 immobilized on solid support.

The epitope recognized by A300-216A-T maps to a region between residues 825 and the C-terminus (residue 886) of human FAD-binding protein BRAF35-HDAC complex 110 kDa (lysine-specific histone demethylase 1) using the numbering given in TrEMBL entry O60341 (GeneID 23028).

Immunoglobulin concentration was determined by extinction coefficient: absorbance at 280 nm of 1.4 equals 1.0 mg of IgG.

APPLICATIONS Centrifuge tube to remove product from lid. Optimal working dilutions should be determined experimentally by the investigator. Prepare working dilution immediately before use.

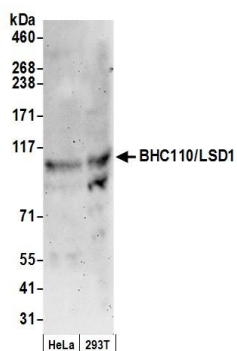
Western Blot 1:5,000 – 1:15,000

Immunohistochemistry 1:500 – 1:2,000. Epitope retrieval with citrate buffer pH 6.0 is recommended for FFPE tissue sections.

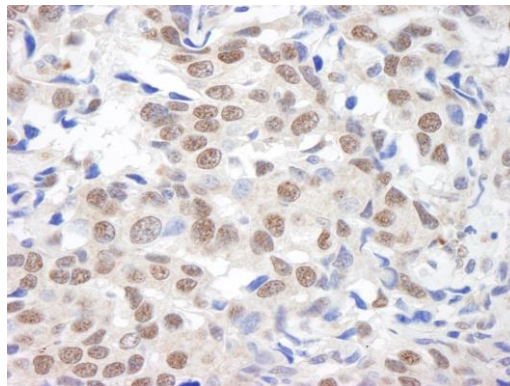
ADDITIONAL INFO <https://www.bethyl.com/product/A300-216A-T>

Use the link above to view SDS, a current list of citations, and other product specific information.

This document certifies that this product has met all of the quality control standards defined by Bethyl Laboratories, Inc.
Michael Spencer, PhD Date: June 6, 2022

**Detection of human BHC110/LSD1 by western blot.**

Samples: Whole cell lysate (50 µg) from HeLa and HEK293T cells prepared using NETN lysis buffer. **Antibody:** Affinity purified rabbit anti-BHC110/LSD1 antibody A300-216A (lot A300-216A-1) used for WB at 0.06 µg/ml. **Detection:** Chemiluminescence with an exposure time of 3 minutes.

**Detection of human BHC110/LSD1 by immunohistochemistry.**

Sample: FFPE section of human breast carcinoma. **Antibody:** Affinity purified rabbit anti-BHC110/LSD1 (Cat. No. A300-216A) used at a dilution of 1:1,000 (1 µg/ml). **Detection:** DAB