



SZABO SCANDIC

Part of Europa Biosite

Produktinformation



Forschungsprodukte & Biochemikalien



Zellkultur & Verbrauchsmaterial



Diagnostik & molekulare Diagnostik



Laborgeräte & Service

Weitere Information auf den folgenden Seiten!
See the following pages for more information!



Lieferung & Zahlungsart

siehe unsere [Liefer- und Versandbedingungen](#)

Zuschläge

- Mindermengenzuschlag
- Trockeneiszuschlag
- Gefahrgutzuschlag
- Expressversand

SZABO-SCANDIC HandelsgmbH

Quellenstraße 110, A-1100 Wien

T. +43(0)1 489 3961-0

F. +43(0)1 489 3961-7

mail@szabo-scandic.com

www.szabo-scandic.com

[linkedin.com/company/szaboscandic](https://www.linkedin.com/company/szaboscandic) 

BRD8 Antibody

Rabbit Polyclonal

Antigen Affinity Purified

Protein ID Q9H0E9

Catalog No. A300-220A-T

GeneID 10902

Lot No. A300-220A-T-2

APPLICATIONS WB, IP, IHC

SPECIES REACTIVITY Human

AMOUNT 10 µl

CONCENTRATION 1000 µg/ml

STORAGE/SHELF LIFE 2 – 8°C / 1 year from date of receipt

PHYSICAL STATE Liquid

BUFFER Tris-citrate/phosphate buffer, pH 7 to 8 containing 0.09% Sodium Azide

ISOTYPE IgG

ORIGIN USA

PRODUCTION PROCEDURES Antibody was affinity purified using an epitope specific to BRD8 immobilized on solid support.

The epitope recognized by A300-220A-T maps to a region found within isoform 2 between residues 225 and 275 of human Bromodomain containing 8 using the numbering given in Swiss-Prot entry Q9H0E9.2 (GeneID 10902).

APPLICATIONS Centrifuge tube to remove product from lid. Optimal working dilutions should be determined experimentally by the investigator. Prepare working dilution immediately before use.

Western Blot 1:2,000 – 1:10,000

Immunoprecipitation 2 – 8 µg/mg lysate

Immunohistochemistry 1:500 – 1:2,000. Epitope retrieval with citrate buffer pH 6.0 is recommended for FFPE tissue sections.

ADDITIONAL INFO <https://www.bethyl.com/product/A300-220A-T>

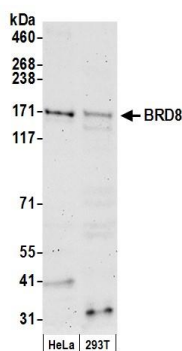
Use the link above to view SDS, a current list of citations, and other product specific information.

IP-western blot protocol: https://www.bethyl.com/content/protocol_IP_WB

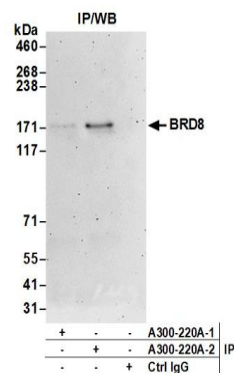
This document certifies that this product has met all of the quality control standards defined by Bethyl Laboratories, Inc.

Michael Spencer, PhD

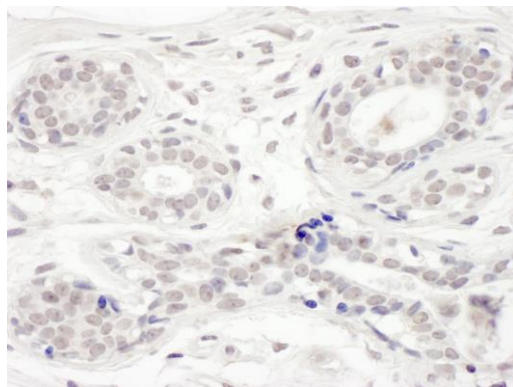
Date: June 6, 2022



Detection of human BRD8 by western blot. *Samples:* Nuclear extract (50 µg) from HeLa and HEK293T cells. *Antibodies:* Affinity purified rabbit anti-BRD8 antibody A300-220A (lot A300-220A-2) used for WB at 0.1 µg/ml. *Detection:* Chemiluminescence with an exposure time of 3 minutes.



Detection of human BRD8 by western blot of immunoprecipitates. *Samples:* Nuclear extract (0.5 or 1 mg per IP reaction; 20% of IP loaded) from HeLa cells. *Antibodies:* Affinity purified rabbit anti-BRD8 antibody A300-220A (lot A300-220A-2) used for IP at 6 µg per reaction. BRD8 was also immunoprecipitated by a previous lot of this antibody (lot A300-220A-1). For blotting immunoprecipitated BRD8, A300-220A-2 was used at 1 µg/ml. *Detection:* Chemiluminescence with an exposure time of 3 minutes.



Detection of human BRD8 by immunohistochemistry. *Sample:* FFPE section of human breast carcinoma. *Antibody:* Affinity purified rabbit anti-BRD8 (Cat. No. A300-220A Lot2) used at a dilution of 1:1,000 (1 µg/ml). *Detection:* DAB