



# SZABO SCANDIC

Part of Europa Biosite

## Produktinformation



Forschungsprodukte & Biochemikalien



Zellkultur & Verbrauchsmaterial



Diagnostik & molekulare Diagnostik



Laborgeräte & Service

Weitere Information auf den folgenden Seiten!  
See the following pages for more information!



### Lieferung & Zahlungsart

siehe unsere [Liefer- und Versandbedingungen](#)

### Zuschläge

- Mindermengenzuschlag
- Trockeneiszuschlag
- Gefahrgutzuschlag
- Expressversand

### SZABO-SCANDIC HandelsgmbH

Quellenstraße 110, A-1100 Wien

T. +43(0)1 489 3961-0

F. +43(0)1 489 3961-7

[mail@szabo-scandic.com](mailto:mail@szabo-scandic.com)

[www.szabo-scandic.com](http://www.szabo-scandic.com)

[linkedin.com/company/szaboscandic](https://www.linkedin.com/company/szaboscandic) 

# HELLS Antibody

Rabbit Polyclonal

Antigen Affinity Purified

Protein ID NP\_060533.2

Catalog No. A300-226A-T

GeneID 3070

Lot No. A300-226A-T-1

**APPLICATIONS** WB, IP

**SPECIES REACTIVITY** Human

**AMOUNT** 10 µl

**CONCENTRATION** 1000 µg/ml

**STORAGE/SHELF LIFE** 2 – 8°C / 1 year from date of receipt

**PHYSICAL STATE** Liquid

**BUFFER** Tris-citrate/phosphate buffer, pH 7 to 8 containing 0.09% Sodium Azide

**ISOTYPE** IgG

**ORIGIN** USA

**PRODUCTION PROCEDURES** Antibody was affinity purified using an epitope specific to HELLS immobilized on solid support.

The epitope recognized by A300-226A-T maps to a region between residues 550 and 600 of human Helicase, Lymphoid-Specific using the numbering given in entry NP\_060533.2 (GeneID 3070).

Immunoglobulin concentration was determined by extinction coefficient: absorbance at 280 nm of 1.4 equals 1.0 mg of IgG.

**APPLICATIONS** Centrifuge tube to remove product from lid. Optimal working dilutions should be determined experimentally by the investigator. Prepare working dilution immediately before use.

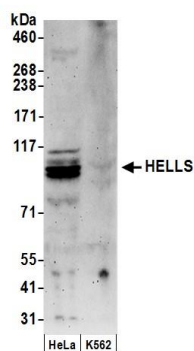
Western Blot 1:2,000 – 1:10,000; Note: Extra bands of equal intensity may be observed when using A300-226A for WB of cell lysate.

Immunoprecipitation 2 – 4 µg/mg lysate

**ADDITIONAL INFO** <https://www.bethyl.com/product/A300-226A-T>

Use the link above to view SDS, a current list of citations, and other product specific information.  
IP-western blot protocol: [https://www.bethyl.com/content/protocol\\_IP\\_WB](https://www.bethyl.com/content/protocol_IP_WB)

This document certifies that this product has met all of the quality control standards defined by Bethyl Laboratories, Inc.  
Michael Spencer, PhD Date: June 6, 2022



**Detection of human HELLS by western blot. *Samples:*** Whole cell lysate (50  $\mu$ g) from HeLa and K-562 cells prepared using NETN lysis buffer. ***Antibody:*** Affinity purified rabbit anti-HELLS antibody A300-226A (lot A300-226A-1) used for WB at 0.1  $\mu$ g/ml. ***Detection:*** Chemiluminescence with an exposure time of 3 minutes.