



SZABO SCANDIC

Part of Europa Biosite

Produktinformation



Forschungsprodukte & Biochemikalien



Zellkultur & Verbrauchsmaterial



Diagnostik & molekulare Diagnostik



Laborgeräte & Service

Weitere Information auf den folgenden Seiten!
See the following pages for more information!



Lieferung & Zahlungsart

siehe unsere [Liefer- und Versandbedingungen](#)

Zuschläge

- Mindermengenzuschlag
- Trockeneiszuschlag
- Gefahrgutzuschlag
- Expressversand

SZABO-SCANDIC HandelsgmbH

Quellenstraße 110, A-1100 Wien

T. +43(0)1 489 3961-0

F. +43(0)1 489 3961-7

mail@szabo-scandic.com

www.szabo-scandic.com

[linkedin.com/company/szaboscandic](https://www.linkedin.com/company/szaboscandic) 

Phospho XRCC1 (S485/T488) Antibody

Rabbit Polyclonal

Antigen Affinity Purified Protein ID P18887

Catalog No. A300-231A-T GenelD 7515

Lot No. A300-231A-T-2

APPLICATIONS	WB, IHC
SPECIES REACTIVITY	Human, Mouse
PRESUMED REACTIVITY	Based on 100% sequence identity, this antibody is predicted to react with Rat
AMOUNT	10 µl
CONCENTRATION	1000 µg/ml
STORAGE/SHELF LIFE	2 – 8°C / 1 year from date of receipt
PHYSICAL STATE	Liquid
BUFFER	Tris-citrate/phosphate buffer, pH 7 to 8 containing 0.09% Sodium Azide
ISOTYPE	IgG
ORIGIN	USA
PRODUCTION PROCEDURES	Antibody was affinity purified using an epitope specific to phosphorylation at Ser 485 and Thr 488 of XRCC1 immobilized on solid support.

The epitope recognized by A300-231A-T maps to a region of surrounding residues Ser 485 and Thr 488 of human X-ray Repair Complementing protein 1 using the numbering given in SwissProt entry P18887 (GenelD 7515).

APPLICATIONS Centrifuge tube to remove product from lid. Optimal working dilutions should be determined experimentally by the investigator. Prepare working dilution immediately before use.

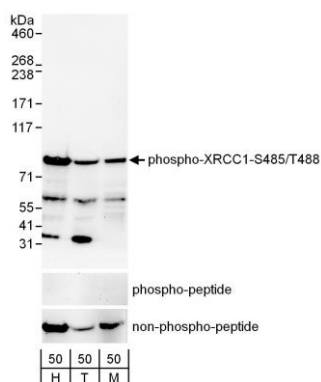
Western Blot 1:1,000 – 1:5,000

Immunohistochemistry 1:2,000 – 1:10,000. Epitope retrieval with citrate buffer pH 6.0 is recommended for FFPE tissue sections.

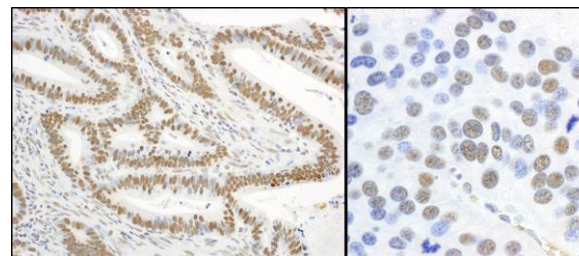
ADDITIONAL INFO <https://www.bethyl.com/product/A300-231A-T>

Use the link above to view SDS, a current list of citations, and other product specific information.

This document certifies that this product has met all of the quality control standards defined by Bethyl Laboratories, Inc.
Michael Spencer, PhD Date: June 6, 2022



Detection of human and mouse Phospho-XRCC1-S485/T488 by western blot. *Samples:* Whole cell lysate (50 µg) from asynchronously growing HeLa (H), HEK293T (T) and mouse NIH-3T3 (M) cells. *Antibodies:* Affinity purified rabbit anti-Phospho-XRCC1-S485/T488 antibody A300-231A (lot A300-231A-2) used for WB at 0.1 µg/ml. The binding of the antibody was blocked by pre-incubation with the phospho-peptide but was not blocked by pre-incubation with the non-phosphorylated peptide. *Detection:* Chemiluminescence with an exposure time of 30 seconds.



Detection of human and mouse Phospho-XRCC1-S485/T488 by immunohistochemistry. *Sample:* FFPE sections of human stomach carcinoma (left) and mouse renal cell carcinoma (right). *Antibody:* Affinity purified rabbit anti-Phospho-XRCC1-S485/T488 (Cat. No. A300-231A Lot2) used at a dilution of 1:5,000 (0.2 µg/ml). *Detection:* DAB