



SZABO SCANDIC

Part of Europa Biosite

Produktinformation



Forschungsprodukte & Biochemikalien



Zellkultur & Verbrauchsmaterial



Diagnostik & molekulare Diagnostik



Laborgeräte & Service

Weitere Information auf den folgenden Seiten!
See the following pages for more information!



Lieferung & Zahlungsart

siehe unsere [Liefer- und Versandbedingungen](#)

Zuschläge

- Mindermengenzuschlag
- Trockeneiszuschlag
- Gefahrgutzuschlag
- Expressversand

SZABO-SCANDIC HandelsgmbH

Quellenstraße 110, A-1100 Wien

T. +43(0)1 489 3961-0

F. +43(0)1 489 3961-7

mail@szabo-scandic.com

www.szabo-scandic.com

[linkedin.com/company/szaboscandic](https://www.linkedin.com/company/szaboscandic)



SMC5 Antibody

Rabbit Polyclonal

Antigen Affinity Purified	Protein ID	Q8IY18
Catalog No. A300-236A-T	GeneID	23137
Lot No. A300-236A-T-3		

APPLICATIONS	WB, IP
SPECIES REACTIVITY	Human, Mouse
AMOUNT	10 µl
CONCENTRATION	1000 µg/ml
STORAGE/SHELF LIFE	2 – 8°C / 1 year from date of receipt
PHYSICAL STATE	Liquid
BUFFER	Tris-citrate/phosphate buffer, pH 7 to 8 containing 0.09% Sodium Azide
ISOTYPE	IgG
ORIGIN	USA
PRODUCTION PROCEDURES	Antibody was affinity purified using an epitope specific to SMC5 immobilized on solid support.

The epitope recognized by A300-236A-T maps to a region between residues 1050 and the C-terminus (residue 1101) of human Structural Maintenance of Chromosomes 5 using the numbering given in TrEMBL entry Q8IY18 (GeneID 23137).

Immunoglobulin concentration was determined by extinction coefficient: absorbance at 280 nm of 1.4 equals 1.0 mg of IgG.

APPLICATIONS Centrifuge tube to remove product from lid. Optimal working dilutions should be determined experimentally by the investigator. Prepare working dilution immediately before use.

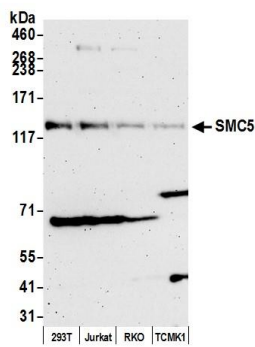
Western Blot 1:2,000 – 1:10,000

Immunoprecipitation 2 – 10 µg/mg lysate

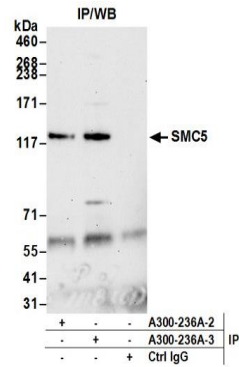
ADDITIONAL INFO <https://www.bethyl.com/product/A300-236A-T>

Use the link above to view SDS, a current list of citations, and other product specific information.

This document certifies that this product has met all of the quality control standards defined by Bethyl Laboratories, Inc.
Michael Spencer, PhD Date: June 6, 2022



Detection of human and mouse SMC5 by western blot.
Samples: Whole cell lysate (50 µg) from HEK293T, Jurkat, RKO, and TCMK-1 cells prepared using NETN lysis buffer.
Antibody: Affinity purified rabbit anti-SMC5 antibody A300-236A (lot A300-236A-3) used for WB at 0.1 µg/ml.
Detection: Chemiluminescence with an exposure time of 3 minutes.



Detection of human SMC5 by western blot of immunoprecipitates. *Samples:* Whole cell lysate (1.0 mg per IP reaction; 20% of IP loaded) from HEK293T cells prepared using NETN lysis buffer. *Antibodies:* Affinity purified rabbit anti-SMC5 antibody A300-236A (lot A300-236A-3) used for IP at 6 µg per reaction. SMC5 was also immunoprecipitated by a previous lot of this antibody (lot A300-236A-2). For blotting immunoprecipitated SMC5, A300-236A was used at 0.1 µg/ml. *Detection:* Chemiluminescence with an exposure time of 75 seconds.