



SZABO SCANDIC

Part of Europa Biosite

Produktinformation



Forschungsprodukte & Biochemikalien



Zellkultur & Verbrauchsmaterial



Diagnostik & molekulare Diagnostik



Laborgeräte & Service

Weitere Information auf den folgenden Seiten!
See the following pages for more information!



Lieferung & Zahlungsart

siehe unsere [Liefer- und Versandbedingungen](#)

Zuschläge

- Mindermengenzuschlag
- Trockeneiszuschlag
- Gefahrgutzuschlag
- Expressversand

SZABO-SCANDIC HandelsgmbH

Quellenstraße 110, A-1100 Wien

T. +43(0)1 489 3961-0

F. +43(0)1 489 3961-7

mail@szabo-scandic.com

www.szabo-scandic.com

[linkedin.com/company/szaboscandic](https://www.linkedin.com/company/szaboscandic) 

SMC6 Antibody

Rabbit Polyclonal

Antigen Affinity Purified Protein ID Q96SB8

Catalog No. A300-237A-T GeneID 79677

Lot No. A300-237A-T-3

APPLICATIONS	WB, IP, IHC
SPECIES REACTIVITY	Human, Mouse
AMOUNT	10 µl
CONCENTRATION	1000 µg/ml
STORAGE/SHELF LIFE	2 – 8°C / 1 year from date of receipt
PHYSICAL STATE	Liquid
BUFFER	Tris-citrate/phosphate buffer, pH 7 to 8 containing 0.09% Sodium Azide
ISOTYPE	IgG
ORIGIN	USA
PRODUCTION PROCEDURES	Antibody was affinity purified using an epitope specific to SMC6 immobilized on solid support.

The epitope recognized by A300-237A-M maps to a region between residues 1050 and the C-terminus (residue 1091) of human Structural Maintenance of Chromosomes 6 using the numbering given in TrEMBL entry Q96SB8 (GeneID 79677).

Immunoglobulin concentration was determined by extinction coefficient: absorbance at 280 nm of 1.4 equals 1.0 mg of IgG.

APPLICATIONS Centrifuge tube to remove product from lid. Optimal working dilutions should be determined experimentally by the investigator. Prepare working dilution immediately before use.

Western Blot 1:2,000 – 1:10,000

Immunoprecipitation 20 µl/mg lysate

Immunohistochemistry 1:40 to 1:200. Epitope retrieval with citrate buffer pH6.0 is recommended for FFPE tissue sections.

IHC HUMAN CONTROLS Colon Carcinoma, Prostate Carcinoma, Seminoma

ADDITIONAL INFO <https://www.bethyl.com/product/A300-237A-T>

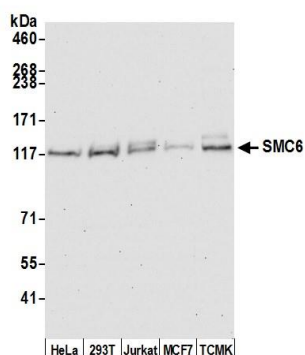
Use the link above to view SDS, a current list of citations, and other product specific information.

IP-western blot protocol: https://www.bethyl.com/content/protocol_IP_WB

This document certifies that this product has met all of the quality control standards defined by Bethyl Laboratories, Inc.

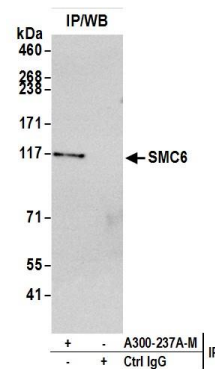
Michael Spencer, PhD

Date: June 6, 2022



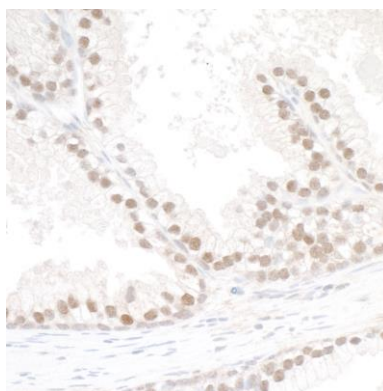
Detection of human and mouse SMC6 by western blot.

Samples: Whole cell lysate (50 µg) from HeLa, HEK293T, Jurkat, MCF-7, and mouse TCMK-1 cells prepared using NETN lysis buffer. **Antibody:** Affinity purified rabbit anti-SMC6 antibody A300-237A-T (lot A300-237A-T-3) used for WB at 1:1000. **Detection:** Chemiluminescence with an exposure time of 30 seconds.



Detection of Human SMC6 by Western Blot of Immunoprecipitates.

Samples: Whole cell lysate (1.0 mg per IP reaction; 20% of IP loaded) from HeLa cells prepared using NETN lysis buffer. **Antibodies:** Affinity purified rabbit anti-SMC6 antibody A300-237A-T (lot A300-237A-T-3) used for IP at 20 µl per reaction. For blotting immunoprecipitated SMC6, A300-237A-T was used at 1:1000. **Detection:** Chemiluminescence with an exposure time of 3 minutes.



Detection of human SMC6 by immunohistochemistry.

Sample: FFPE section of prostate carcinoma. **Antibody:** Rabbit anti-SMC6 antibody (A300-237A-T-3) used at 1:40. **Secondary:** HRP-conjugated goat anti-rabbit IgG (A120-501P).