



SZABO SCANDIC

Part of Europa Biosite

Produktinformation



Forschungsprodukte & Biochemikalien



Zellkultur & Verbrauchsmaterial



Diagnostik & molekulare Diagnostik



Laborgeräte & Service

Weitere Information auf den folgenden Seiten!
See the following pages for more information!



Lieferung & Zahlungsart

siehe unsere [Liefer- und Versandbedingungen](#)

Zuschläge

- Mindermengenzuschlag
- Trockeneiszuschlag
- Gefahrgutzuschlag
- Expressversand

SZABO-SCANDIC HandelsgmbH

Quellenstraße 110, A-1100 Wien

T. +43(0)1 489 3961-0

F. +43(0)1 489 3961-7

mail@szabo-scandic.com

www.szabo-scandic.com

[linkedin.com/company/szaboscandic](https://www.linkedin.com/company/szaboscandic)



WRN Antibody

Rabbit Polyclonal

Antigen Affinity Purified

Protein ID Q14191

Catalog No. A300-239A

GeneID 7486

Lot No. A300-239A-3

APPLICATIONS WB, IP

SPECIES REACTIVITY Human

AMOUNT 100 µl

CONCENTRATION 1000 µg/ml

STORAGE/SHELF LIFE 2 – 8° C / 1 year from date of receipt

PHYSICAL STATE Liquid

BUFFER Tris-citrate/phosphate buffer, pH 7 to 8 containing 0.09% Sodium Azide

ISOTYPE IgG

ORIGIN USA

PRODUCTION PROCEDURES Antibody was affinity purified using an epitope specific to WRN immobilized on solid support.

The epitope recognized by A300-239A maps to a region between residues 1400 and the C-terminus (residue 1432) of human Werner Syndrome Helicase using the numbering given in SwissProt entry Q14191 (GeneID 7486).

Immunoglobulin concentration was determined by extinction coefficient: absorbance at 280 nm of 1.4 equals 1.0 mg of IgG.

APPLICATIONS Centrifuge tube to remove product from lid. Optimal working dilutions should be determined experimentally by the investigator. Prepare working dilution immediately before use.

Western Blot 1:5,000 – 1:25,000

Immunoprecipitation 2 – 5 µg/mg lysate

ADDITIONAL INFO <https://www.bethyl.com/product/A300-239A>

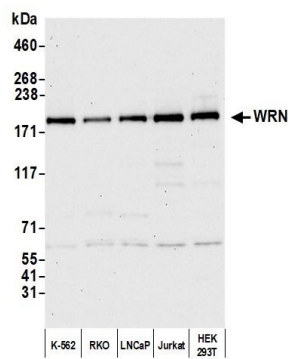
Use the link above to view SDS, a current list of citations, and other product specific information.

IP-western blot protocol: https://www.bethyl.com/content/protocol_IP_WB

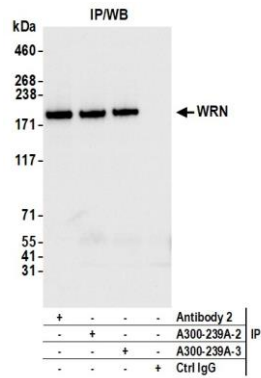
This document certifies that this product has met all of the quality control standards defined by Bethyl Laboratories, Inc.

Michael Spencer, PhD

Date: September 16, 2021



Detection of human WRN by western blot. *Samples:* Whole cell lysate (10 µg) from K-562, RKO, LNCaP, Jurkat, and HEK293T cells prepared using NETN lysis buffer. *Antibody:* Affinity purified rabbit anti-WRN antibody (A300-239A lot 3) used for WB at 0.1 µg/ml. *Detection:* Chemiluminescence with an exposure time of 30 seconds.



Detection of human WRN by western blot of immunoprecipitates. *Samples:* Whole cell lysate (1.0 mg per IP reaction; 20% of IP loaded) from K-562 cells prepared using NETN lysis buffer. *Antibodies:* Affinity purified rabbit anti-WRN antibody A300-239A (lot A300-239A-3) used for IP at 6 µg per reaction. WRN was also immunoprecipitated by a previous lot of this antibody (lot A300-239A) and rabbit anti-WRN antibody Brother. For blotting immunoprecipitated WRN, A300-239A was used at 0.1 µg/ml. *Detection:* Chemiluminescence with an exposure time of 3 seconds.